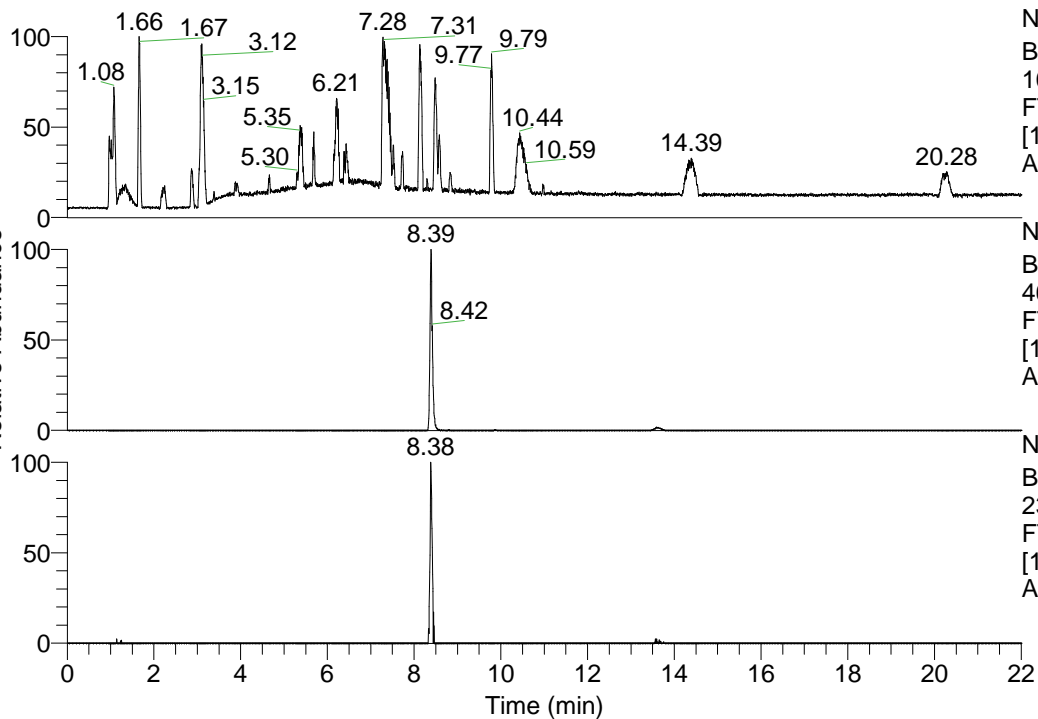


RT: 0.00 - 22.01



NL: 1.41E8
 Base Peak m/z=
 100.00000-1500.00000 F:
 FTMS + p ESI Full ms
 [100.00-1500.00] MS
 Aperta_HDX

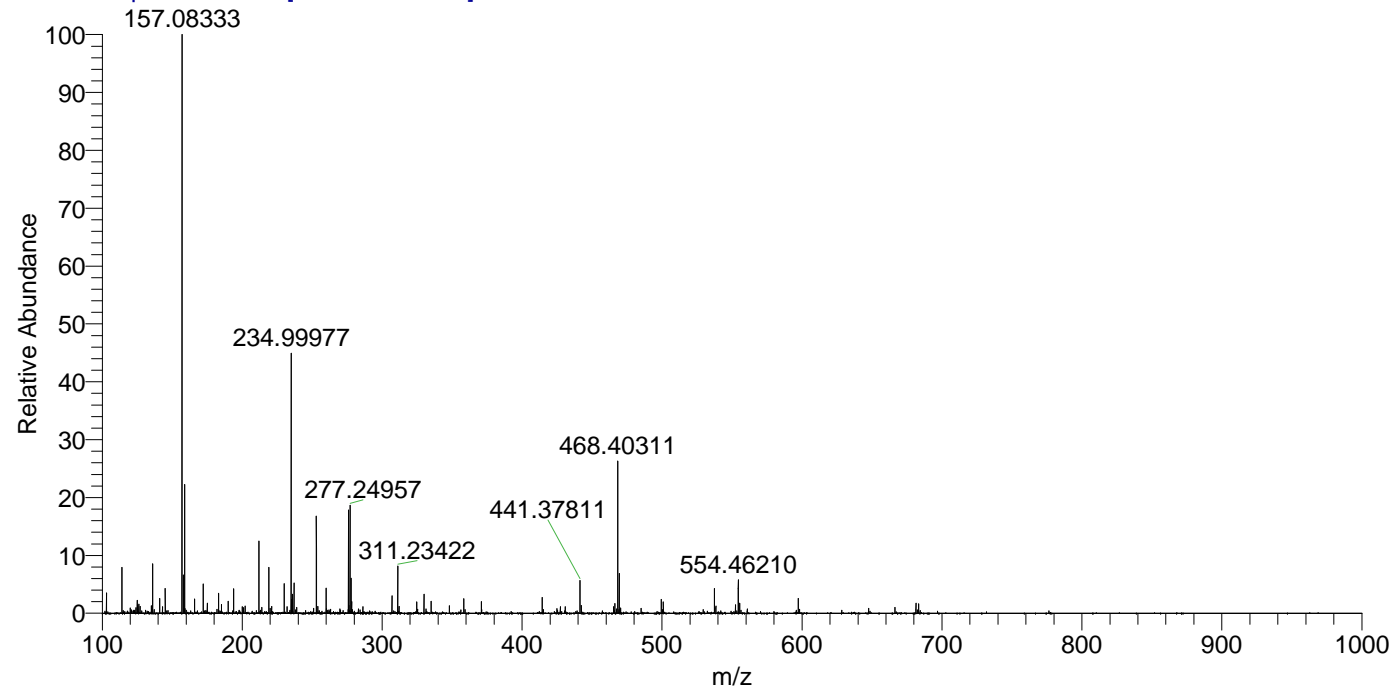
NL: 5.84E6
 Base Peak m/z=
 468.40200-468.40668 F:
 FTMS + p ESI Full ms
 [100.00-1500.00] MS
 Aperta_HDX

NL: 5.55E5
 Base Peak m/z=
 235.20804-235.21040 F:
 FTMS + p ESI Full ms
 [100.00-1500.00] MS
 Aperta_HDX

Aperta_HDX#1398 RT: 8.39
 T: FTMS + p ESI Full ms [100.00-1500.00]
 m/z = 468.00000-469.00000

m/z	Intensity	Relative	Delta (ppm)	Composition
468.40311	5842025.0	100.00	-1.46	C ₂₅ H ₃₈ ² H ₇ O ₂ N ₆
			1.85	C ₂₅ H ₃₆ ² H ₈ O ₂ N ₆
			-4.76	C ₂₅ H ₄₀ ² H ₆ O ₂ N ₆
			5.16	C ₂₅ H ₃₄ ² H ₉ O ₂ N ₆
			-8.07	C ₂₅ H ₄₂ ² H ₅ O ₂ N ₆
			8.46	C ₂₅ H ₃₂ ² H ₁₀ O ₂ N ₆

Aperta_HDX #1398 RT: 8.39 AV: 1 NL: 2.15E7
 T: FTMS + p ESI Full ms [100.00-1500.00]



Aperta_HDX #1398 RT: 8.39 AV: 1 NL: 5.67E6
 T: FTMS + p ESI Full ms [100.00-1500.00]

