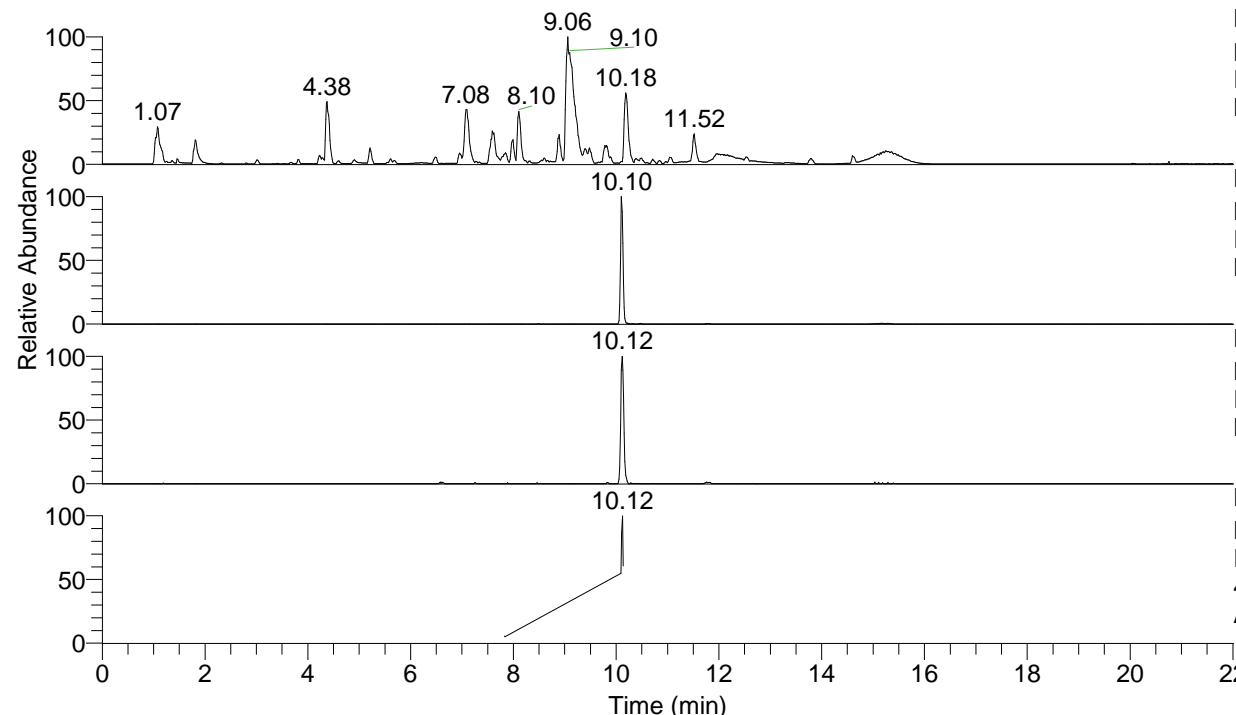


RT: 0.00 - 22.01



NL: 1.54E8
 Base Peak m/z= 100.00000-1500.00000 F:
 FTMS + p ESI Full ms [100.00-1500.00]
 MS Aperta19

NL: 3.44E6
 Base Peak m/z= 461.35809-461.36271 F:
 FTMS + p ESI Full ms [100.00-1500.00]
 MS Aperta19

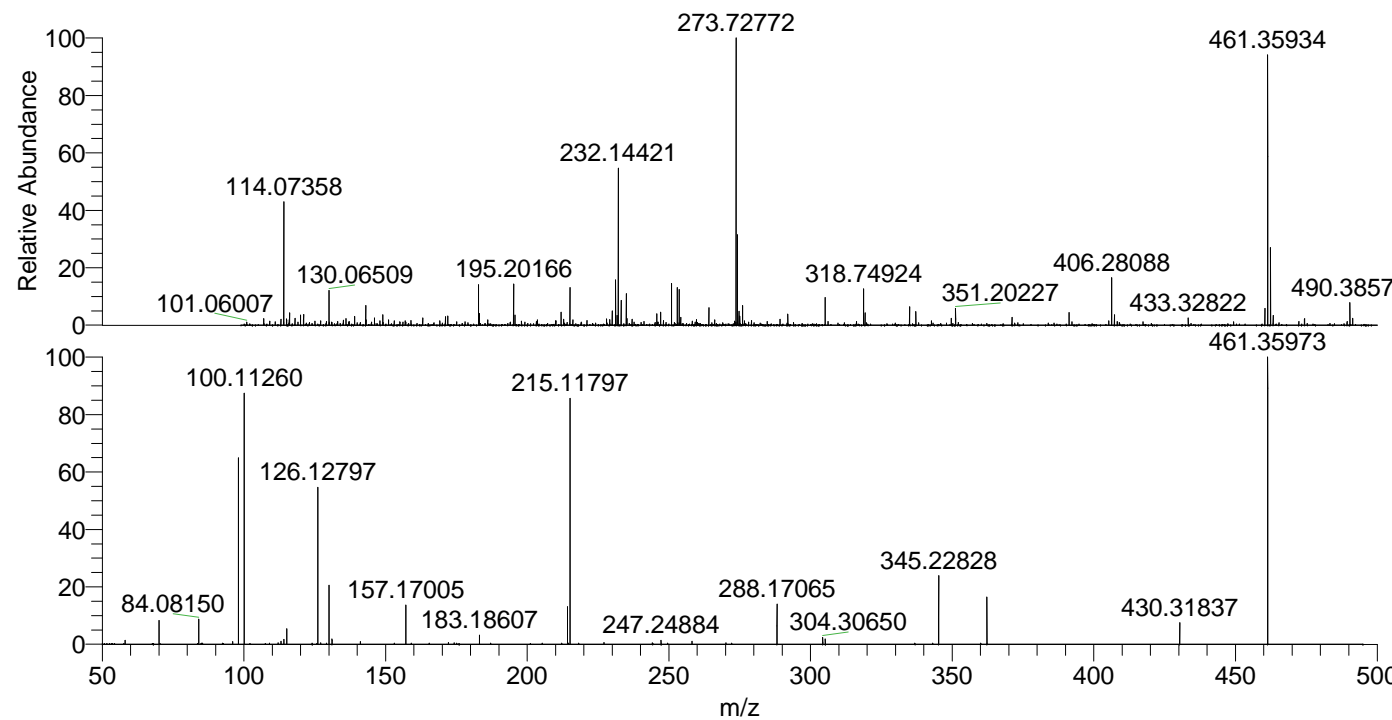
NL: 6.32E5
 Base Peak m/z= 231.18295-231.18527 F:
 FTMS + p ESI Full ms [100.00-1500.00]
 MS Aperta19

NL: 4.24E5
 Base Peak m/z= 50.00000-1500.00000 F:
 FTMS + p ESI d Full ms2
 461.32@hcd35.00 [50.00-490.00] MS
 Aperta19

Aperta19#4096-4112 RT: 10.09-10.14

F: FTMS + p ESI d Full ms2 461.32 ...
 m/z= 50.00000-1000.00000

m/z	Intensity	Relative
58.06602	4340.2	1.38
70.06599	26025.6	8.28
84.08150	27595.7	8.78
96.08169	2873.3	0.91
98.09158	2067.6	0.66
98.09692	201870.1	64.24
100.11260	274950.5	87.49
113.10792	3370.0	1.07
114.09168	5329.0	1.70
115.12351	16956.1	5.40
126.12797	174954.4	55.67
130.06532	64465.3	20.51
131.11821	5862.3	1.87
141.13881	3067.3	0.98
157.17005	44063.9	14.02
172.18132	1955.8	0.62
174.19719	1763.5	0.56
183.18607	9993.4	3.18
214.22798	41080.8	13.07
215.11797	266008.4	84.65
227.11882	1901.2	0.60
247.24884	4260.0	1.36
258.16027	3239.4	1.03
288.17065	43608.8	13.88
304.30650	7745.7	2.46
305.19639	5893.8	1.88
345.22828	74592.5	23.74
362.25550	51246.2	16.31
430.31837	23833.9	7.58
461.35973	314249.3	100.00



NL: 3.46E6
 Aperta19#4099 RT:
 10.10 AV: 1 T: FTMS + p
 ESI Full lock ms
 [100.00-1500.00]

NL: 3.11E5
 Aperta19#4093-4116 RT:
 10.09-10.14 AV: 4 F:
 FTMS + p ESI d Full ms2
 461.32@hcd35.00
 [50.00-490.00]