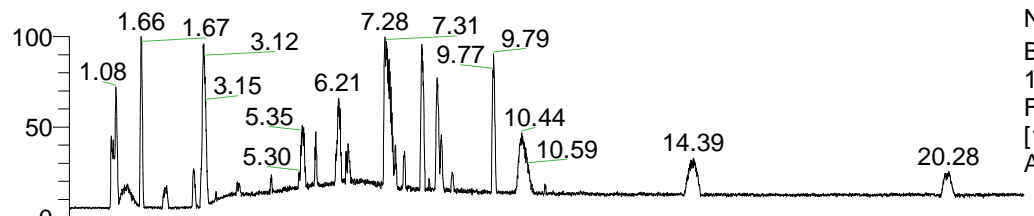


RT: 0.00 - 22.01



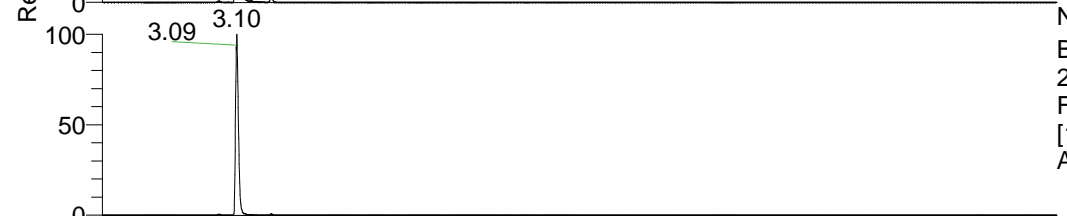
NL: 1.41E8
 Base Peak m/z=
 100.00000-1500.00000 F:
 FTMS + p ESI Full ms
 [100.00-1500.00] MS
 Aperta_HDX

Aaperta_HDX#498 RT: 3.10
 T: FTMS + p ESI Full ms [100.00-1500.00]
 m/z = 462.00000-463.00000

m/z	Intensity	Relative	Delta (ppm)	Composition
462.41037	124712128.0	100.00	1.43	C ₂₃ H ₃₄ ² H ₁₀ O ₃ N ₆
			-1.92	C ₂₃ H ₃₆ ² H ₉ O ₃ N ₆
			-5.27	C ₂₃ H ₃₈ ² H ₈ O ₃ N ₆
			-8.61	C ₂₃ H ₄₀ ² H ₇ O ₃ N ₆

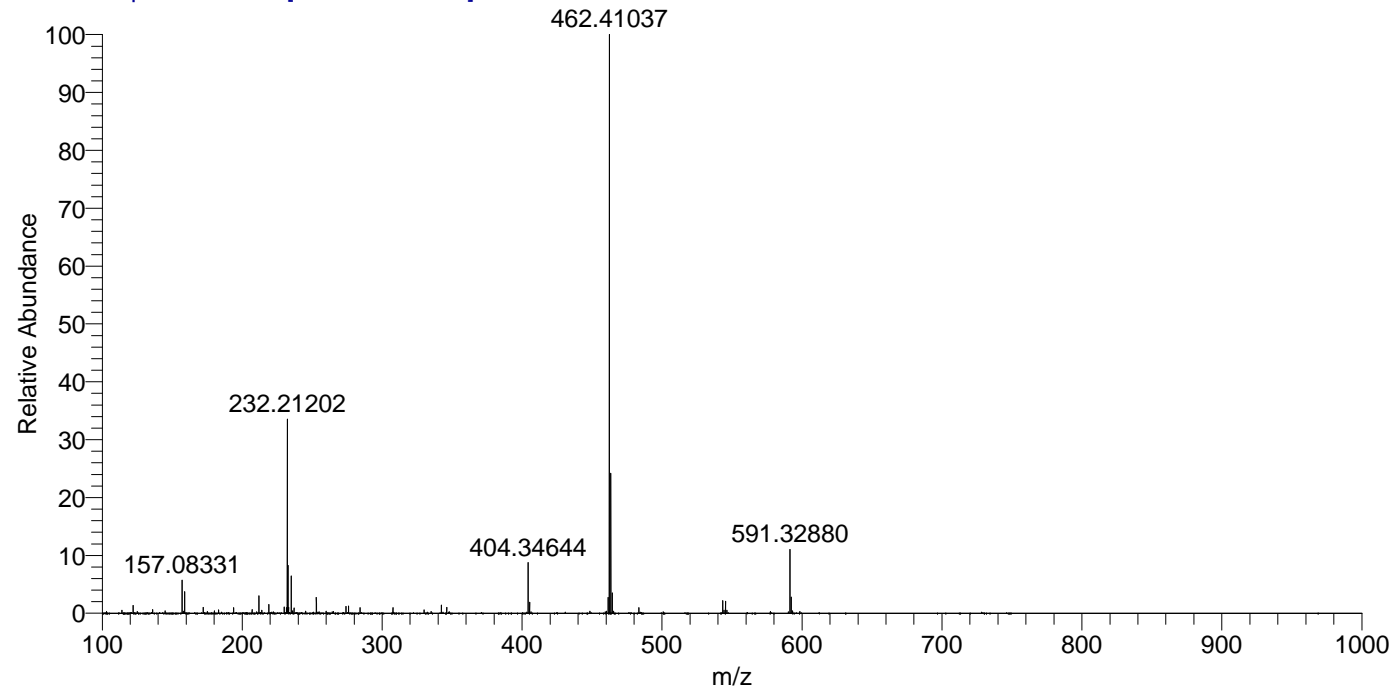


NL: 1.35E8
 Base Peak m/z=
 462.40950-462.41412 F:
 FTMS + p ESI Full ms
 [100.00-1500.00] MS
 Aperta_HDX



NL: 4.57E7
 Base Peak m/z=
 232.21179-232.21411 F:
 FTMS + p ESI Full ms
 [100.00-1500.00] MS
 Aperta_HDX

Aaperta_HDX #498 RT: 3.10 AV: 1 NL: 1.24E8
 T: FTMS + p ESI Full ms [100.00-1500.00]



Aaperta_HDX #498 RT: 3.10 AV: 1 NL: 1.24E8
 T: FTMS + p ESI Full ms [100.00-1500.00]

