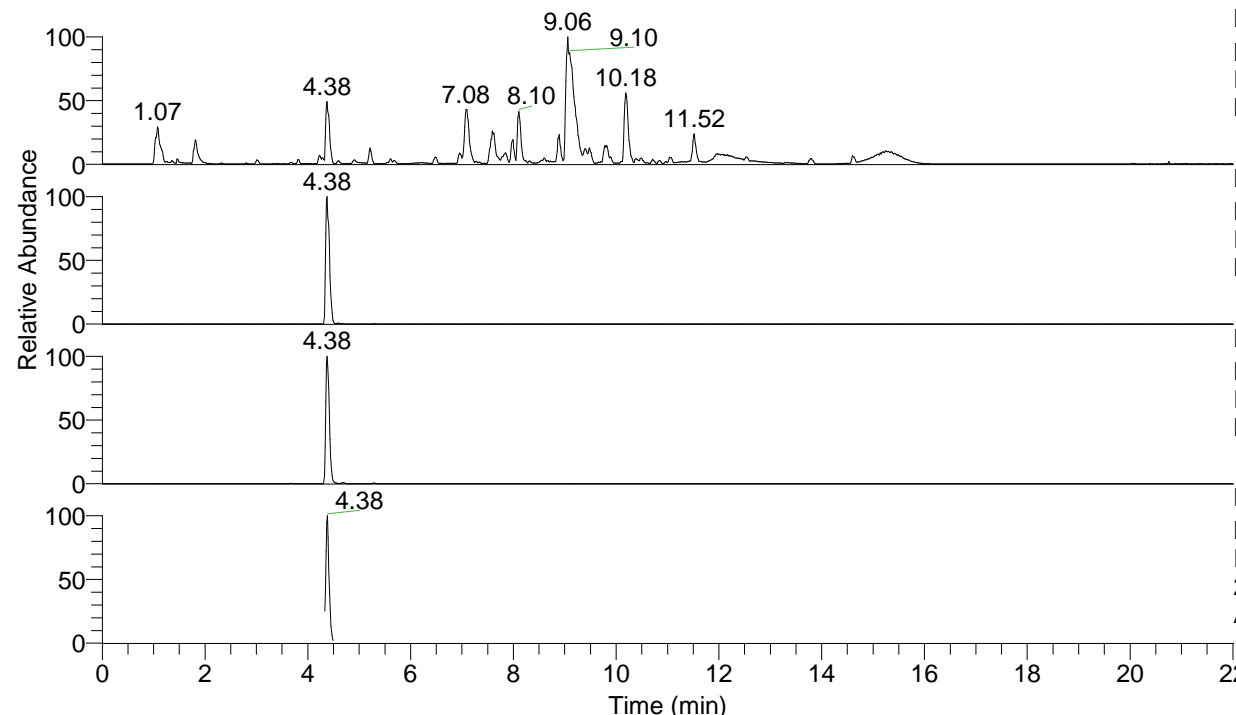


RT: 0.00 - 22.01



NL: 1.54E8  
 Base Peak m/z= 100.00000-1500.00000 F:  
 FTMS + p ESI Full ms [100.00-1500.00]  
 MS Aperta19

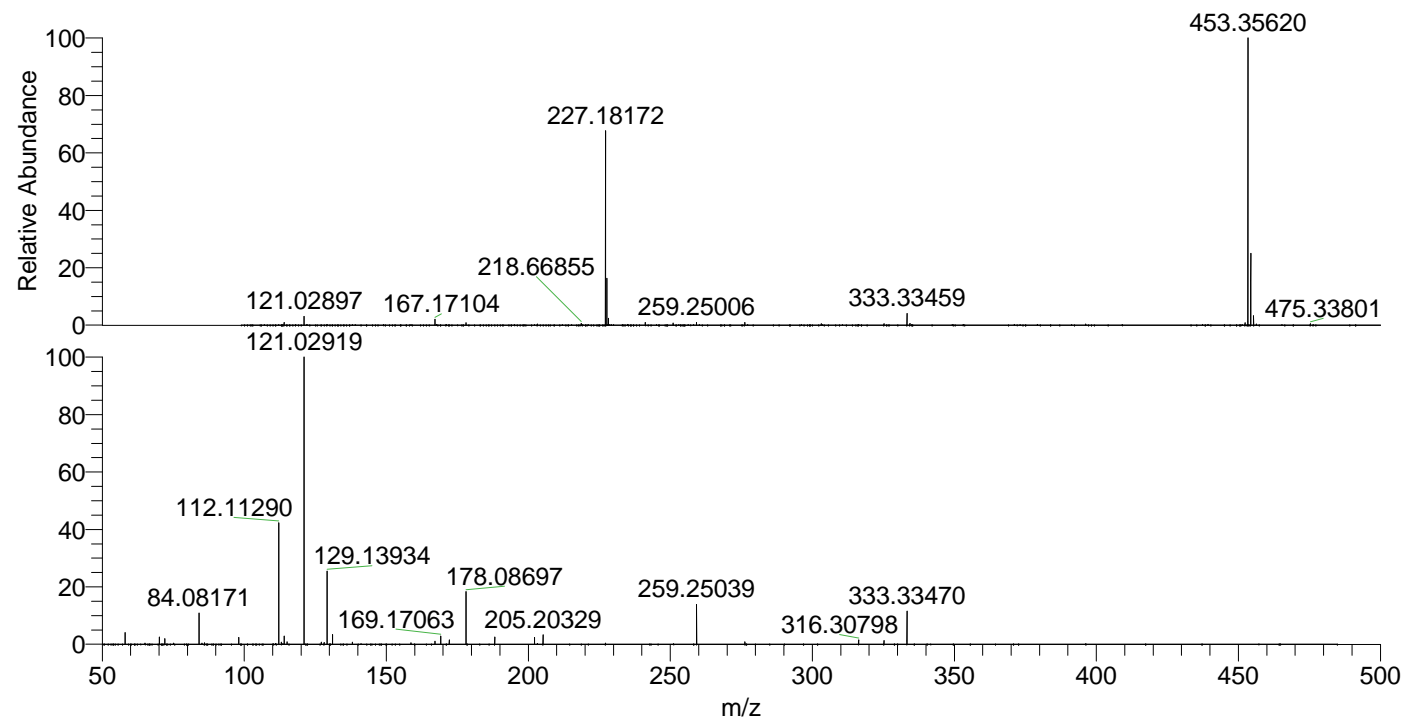
NL: 7.59E7  
 Base Peak m/z= 453.35304-453.35758 F:  
 FTMS + p ESI Full ms [100.00-1500.00]  
 MS Aperta19

NL: 5.10E7  
 Base Peak m/z= 227.18043-227.18271 F:  
 FTMS + p ESI Full ms [100.00-1500.00]  
 MS Aperta19

NL: 1.32E7  
 Base Peak m/z= 50.00000-1500.00000 F:  
 FTMS + p ESI d Full ms2  
 227.18@hcd35.00 [50.00-480.00] MS  
 Aperta19

Aaperta19#1751-1803 RT: 4.33-4.45 AV: 10  
 F: FTMS + p ESI d Full ms2 227.18@h ...  
 m/z= 50.00000-1000.00000

m/z	Intensity	Relative
58.06625	281921.8	4.09
70.06620	171591.7	2.49
72.08181	131335.3	1.90
84.08171	732206.1	10.61
86.06094	36136.2	0.52
98.09728	162053.2	2.35
112.11290	2825433.0	40.95
113.10821	49030.2	0.71
114.09222	190580.6	2.76
115.12381	57002.8	0.83
121.02919	6899039.0	100.00
127.12368	46401.6	0.67
128.10773	41566.1	0.60
129.13934	1740868.8	25.23
131.11864	229995.2	3.33
138.05526	50937.5	0.74
167.17147	71776.5	1.04
169.17063	194627.8	2.82
172.18158	101916.1	1.48
178.08697	1226755.6	17.78
188.17661	171292.8	2.48
202.19229	161670.8	2.34
205.20329	220246.1	3.19
259.25039	944454.9	13.69
276.27613	53968.1	0.78
316.30798	98788.4	1.43
325.22467	91704.1	1.33
333.33470	786317.9	11.40



NL: 7.50E7  
 Aaperta19#1771 RT: 4.38  
 AV: 1 T: FTMS + p ESI  
 Full ms [100.00-1500.00]

NL: 6.66E6  
 Aaperta19#1748-1808  
 RT: 4.33-4.45 AV: 10 F:  
 FTMS + p ESI d Full ms2  
 227.18@hcd35.00  
 [50.00-480.00]