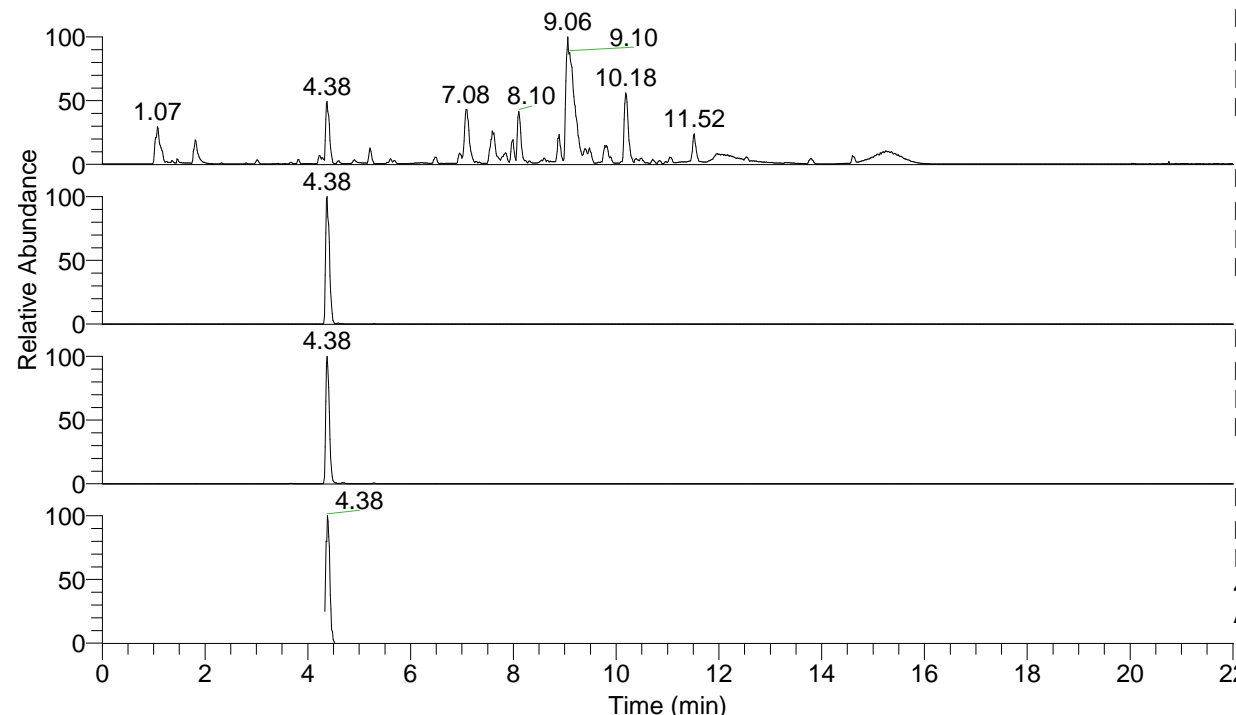


RT: 0.00 - 22.01



NL: 1.54E8
 Base Peak m/z= 100.00000-1500.00000 F:
 FTMS + p ESI Full ms [100.00-1500.00]
 MS Aperta19

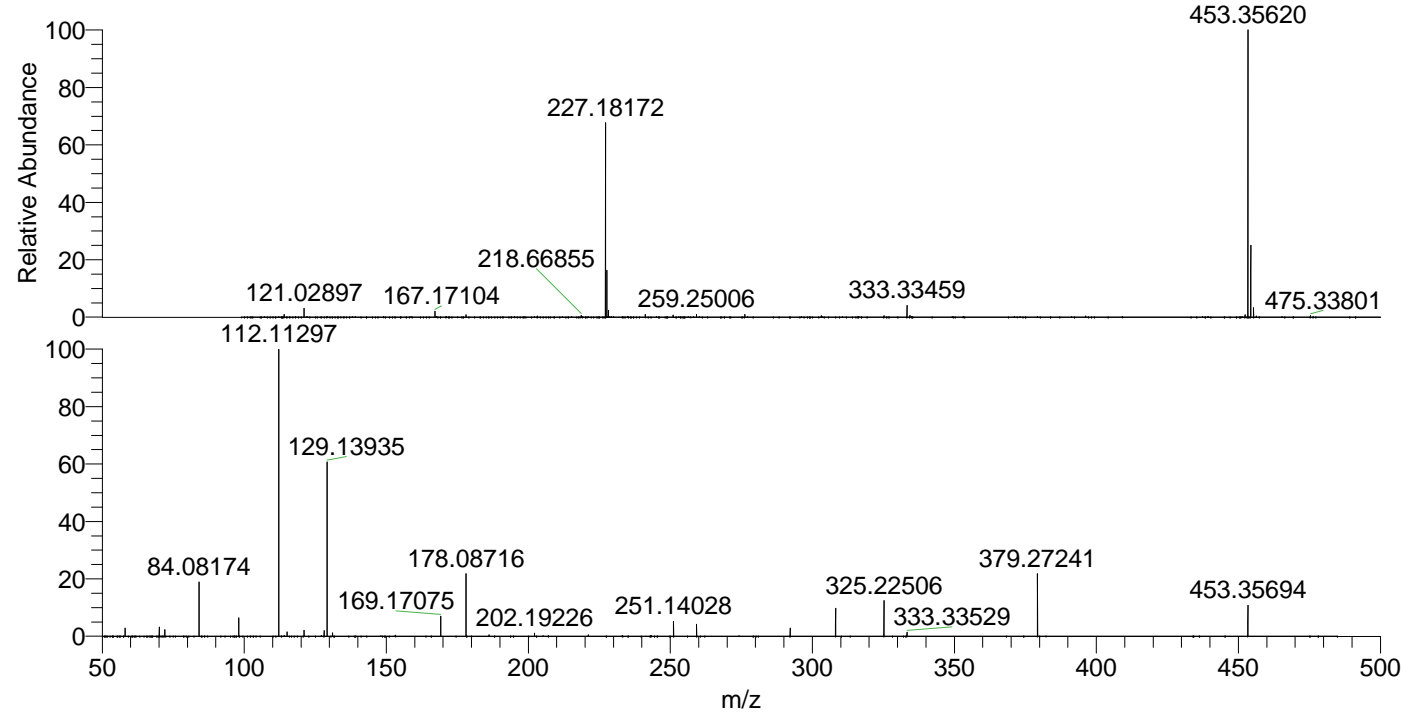
NL: 7.59E7
 Base Peak m/z= 453.35304-453.35758 F:
 FTMS + p ESI Full ms [100.00-1500.00]
 MS Aperta19

NL: 5.10E7
 Base Peak m/z= 227.18043-227.18271 F:
 FTMS + p ESI Full ms [100.00-1500.00]
 MS Aperta19

NL: 1.17E7
 Base Peak m/z= 50.00000-1500.00000 F:
 FTMS + p ESI d Full ms2
 453.35@hcd35.00 [50.00-480.00] MS
 Aperta19

Aaperta19#1750-1808 RT: 4.33-4.46 AV: 11
 F: FTMS + p ESI d Full ms2 453.35@h ...
 m/z= 50.00000-1000.00000

m/z	Intensity	Relative
58.06619	198335.7	2.86
70.06616	217635.1	3.14
72.08181	160110.4	2.31
84.08174	1299688.9	18.75
98.09732	458051.4	6.61
112.11297	6932519.0	100.00
115.12382	107962.9	1.56
121.02924	144141.3	2.08
128.10781	130869.3	1.89
129.13935	4277241.0	61.70
131.11865	76769.1	1.11
169.17075	480845.5	6.94
178.08716	1498043.9	21.61
186.19734	36732.7	0.53
202.19226	76293.2	1.10
221.13006	34820.8	0.50
251.14028	355030.1	5.12
259.25039	288797.4	4.17
292.20299	195550.3	2.82
308.19819	676403.7	9.76
325.22506	855224.9	12.34
333.33529	92371.2	1.33
379.27241	1515909.9	21.87
453.35694	742782.6	10.71



NL: 7.50E7
 Aaperta19#1771 RT: 4.38
 AV: 1 T: FTMS + p ESI
 Full ms [100.00-1500.00]

NL: 6.86E6
 Aaperta19#1746-1813
 RT: 4.33-4.46 AV: 11 F:
 FTMS + p ESI d Full ms2
 453.35@hcd35.00
 [50.00-480.00]