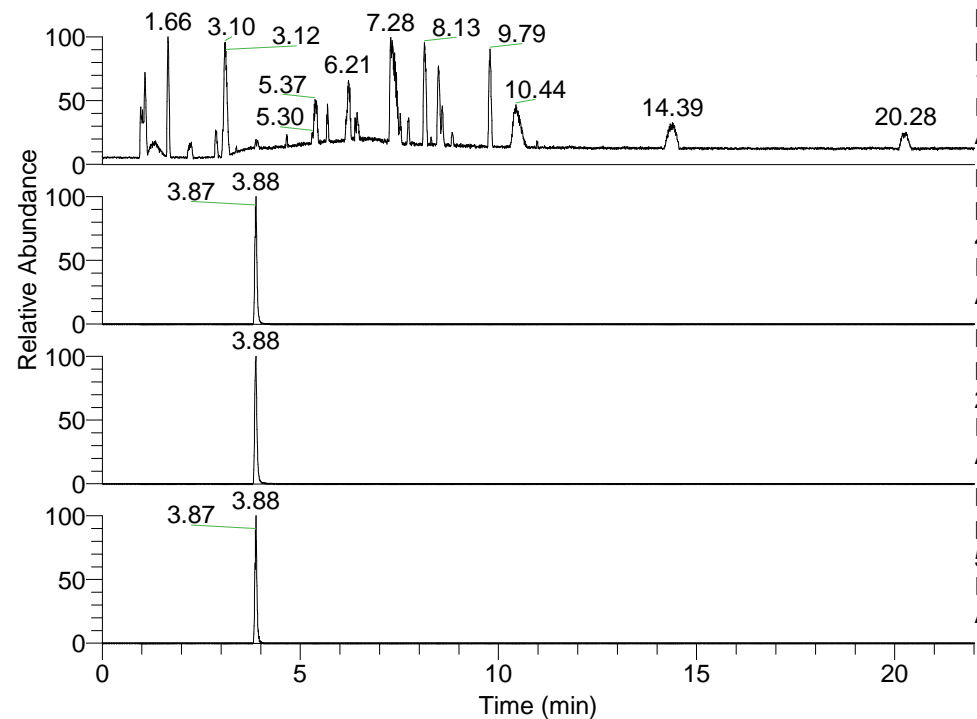


RT: 0.00 - 22.01



NL: 1.41E8
 Base Peak m/z=
 100.00000-1500.00000 F: FTMS + p
 ESI Full ms [100.00-1500.00] MS
 Aperta_HDX

NL: 2.02E7
 Base Peak m/z=
 457.38916-457.39374 F: FTMS + p
 ESI Full ms [100.00-1500.00] MS
 Aperta_HDX

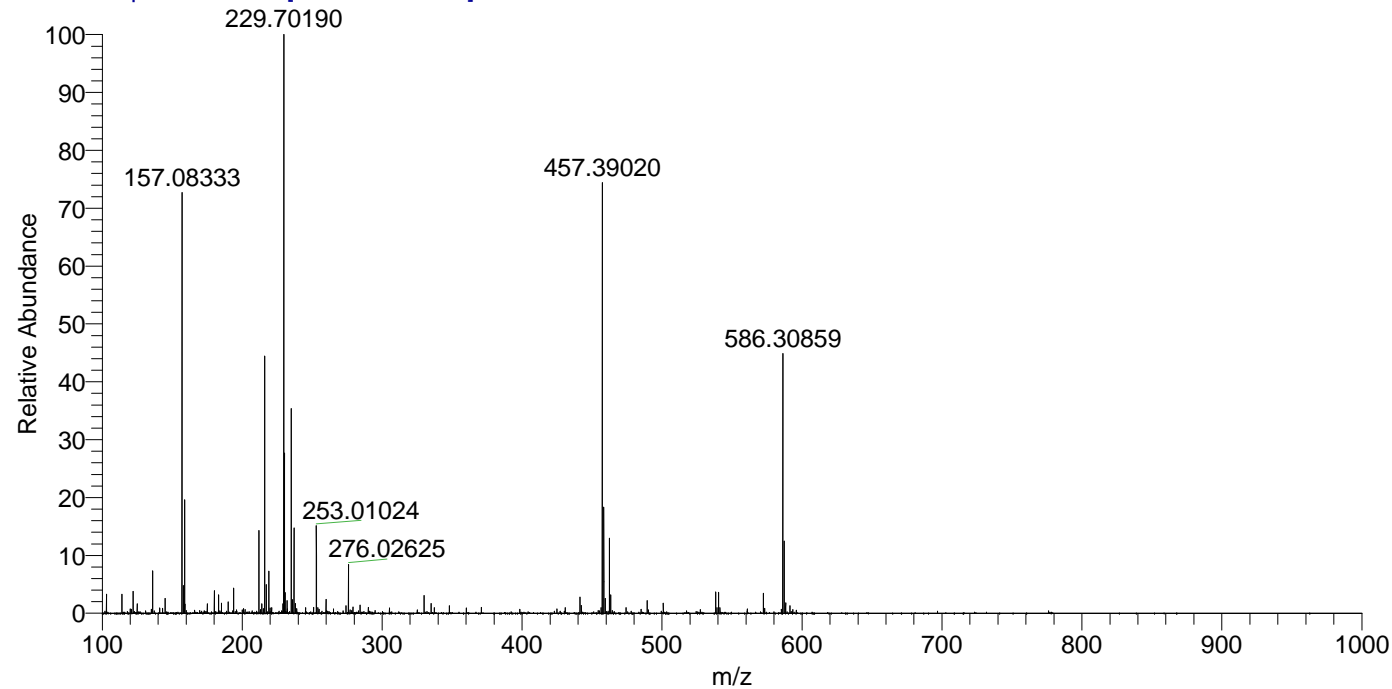
NL: 2.76E7
 Base Peak m/z=
 229.70163-229.70393 F: FTMS + p
 ESI Full ms [100.00-1500.00] MS
 Aperta_HDX

NL: 9.32E5
 Base Peak m/z=
 572.38773-572.39345 F: FTMS + p
 ESI Full ms [100.00-1500.00] MS
 Aperta_HDX

Aperta_HDX#628 RT: 3.88
 T: FTMS + p ESI Full ms [100.00-1500.00]
 m/z= 457.00000-458.00000

m/z	Intensity	Relative	Delta (ppm)	Composition
457.39020	20241604.0	100.00	-1.54	C ₂₄ H ₄₁ ² H ₅ O ₃ N ₅
			1.85	C ₂₄ H ₃₉ ² H ₆ O ₃ N ₅
			-4.92	C ₂₄ H ₄₃ ² H ₄ O ₃ N ₅
			5.23	C ₂₄ H ₃₇ ² H ₇ O ₃ N ₅
			-8.31	C ₂₄ H ₄₅ ² H ₃ O ₃ N ₅
			8.62	C ₂₄ H ₃₅ ² H ₈ O ₃ N ₅

Aperta_HDX #628 RT: 3.88 AV: 1 NL: 2.66E7
 T: FTMS + p ESI Full ms [100.00-1500.00]



Aperta_HDX #628 RT: 3.88 AV: 1 NL: 1.98E7
 T: FTMS + p ESI Full ms [100.00-1500.00]

