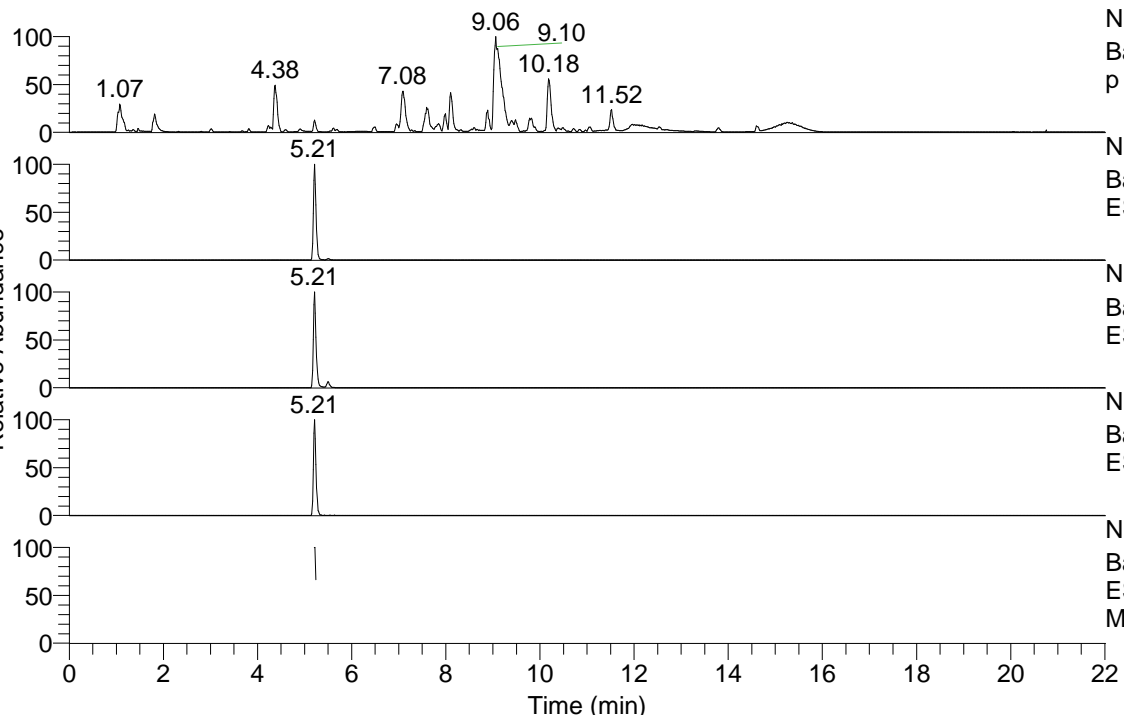


RT: 0.00 - 22.01



NL: 1.54E8
 Base Peak m/z= 100.00000-1500.00000 F: FTMS + p ESI Full ms [100.00-1500.00] MS Aperta19

NL: 1.98E7
 Base Peak m/z= 452.35781-452.36233 F: FTMS + p ESI Full ms [100.00-1500.00] MS Aperta19

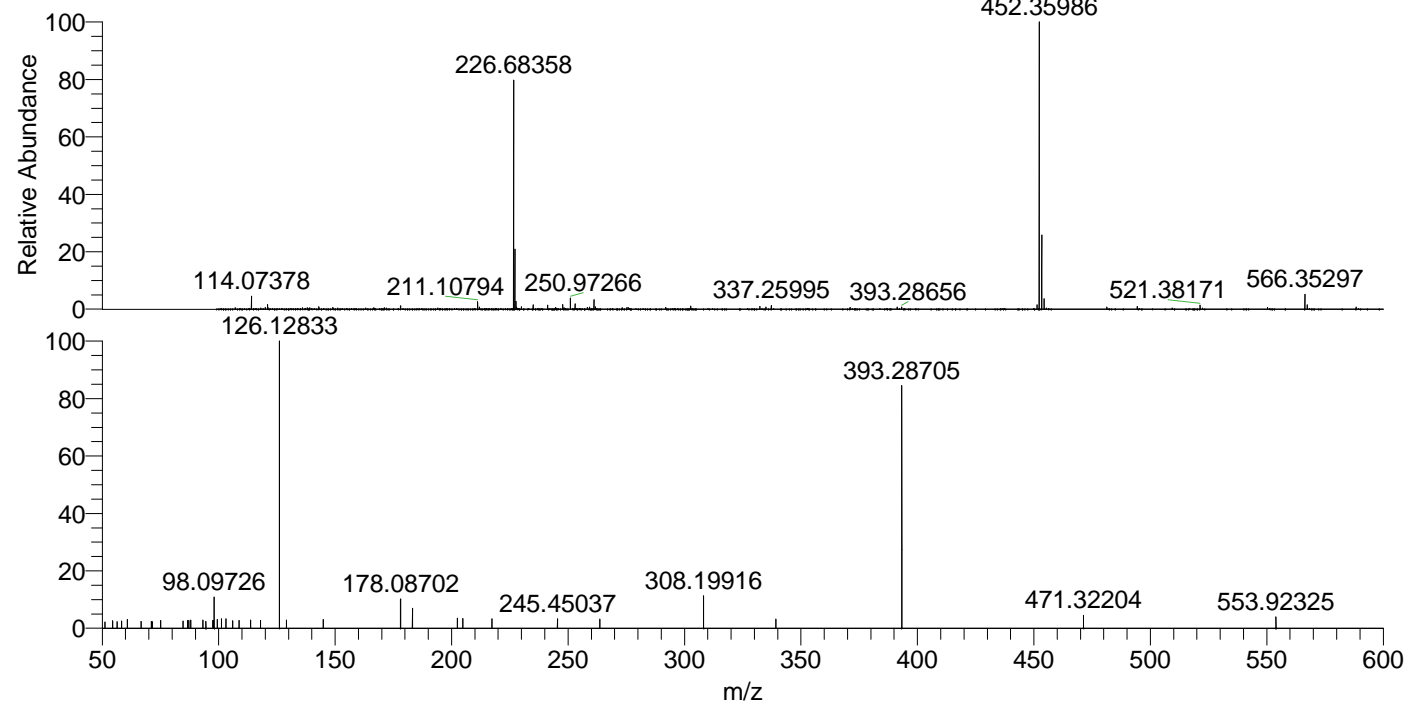
NL: 1.62E7
 Base Peak m/z= 226.68282-226.68508 F: FTMS + p ESI Full ms [100.00-1500.00] MS Aperta19

NL: 1.04E6
 Base Peak m/z= 566.35010-566.35576 F: FTMS + p ESI Full ms [100.00-1500.00] MS Aperta19

NL: 6.29E4
 Base Peak m/z= 50.00000-1500.00000 F: FTMS + p ESI d Full ms2 566.35@hcd35.00 [50.00-595.00] MS Aperta19

Aperta19#2105-2118 RT: 5.21-5.24 AV: F: FTMS + p ESI d Full ms2 566.35 ...
 m/z= 50.00000-1000.00000

m/z	Intensity	Relative
51.21706	1151.5	2.20
54.53004	1395.5	2.66
56.42934	1197.6	2.28
58.33619	1323.6	2.52
60.72328	1597.5	3.05
66.75080	1258.3	2.40
71.15294	1237.1	2.36
71.46707	1181.8	2.25
75.11788	1437.5	2.74
84.68445	1340.0	2.56
86.62382	1451.1	2.77
86.68501	1336.7	2.55
87.13829	1446.5	2.76
87.95826	1523.7	2.91
93.22428	1473.8	2.81
94.52519	1260.7	2.40
97.50374	1416.3	2.70
97.76762	1438.6	2.74
98.09726	5647.9	10.77
99.34555	1617.4	3.08
101.16895	1736.0	3.31
103.09833	1712.3	3.27
103.17928	1362.8	2.60
105.94798	1395.2	2.66
108.78028	1448.6	2.76
113.74901	1496.8	2.85
117.94950	1411.2	2.69
126.12833	52430.0	100.00
129.05483	1494.3	2.85
144.85903	1615.7	3.08
178.08702	5408.8	10.32
183.18565	3662.4	6.99
202.51278	1798.7	3.43
204.82275	1788.2	3.41
217.27820	1711.5	3.26
245.45037	1762.0	3.36
263.65173	1655.1	3.16
308.19916	5860.0	11.18
339.22899	1630.7	3.11
393.28705	45136.6	86.09
471.32204	2362.2	4.51
553.92325	2086.2	3.98



NL: 1.97E7
 Aperta19#2107 RT: 5.21 AV: 1 T: FTMS + p ESI Full lock ms [100.00-1500.00]

NL: 5.17E4
 Aperta19#2094-2126 RT: 5.21-5.24 AV: 3 F: FTMS + p ESI d Full ms2 566.35@hcd35.00 [50.00-595.00]