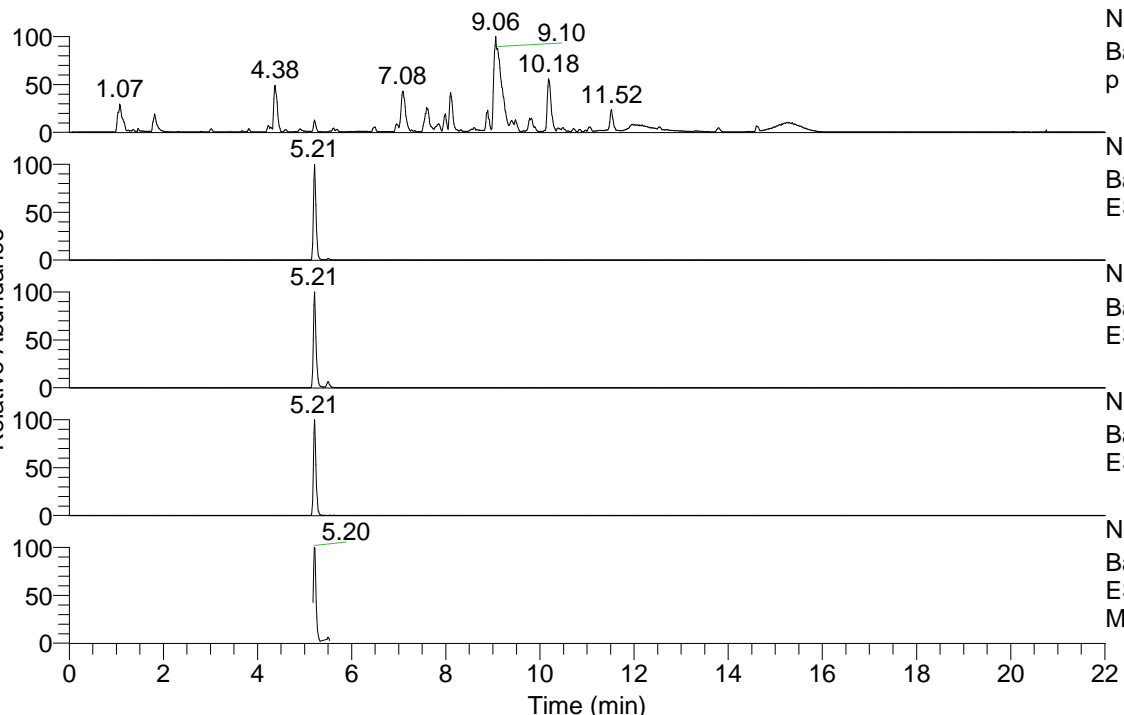


RT: 0.00 - 22.01



NL: 1.54E8
 Base Peak m/z= 100.00000-1500.00000 F: FTMS + p ESI Full ms [100.00-1500.00] MS Aperta19

NL: 1.98E7
 Base Peak m/z= 452.35781-452.36233 F: FTMS + p ESI Full ms [100.00-1500.00] MS Aperta19

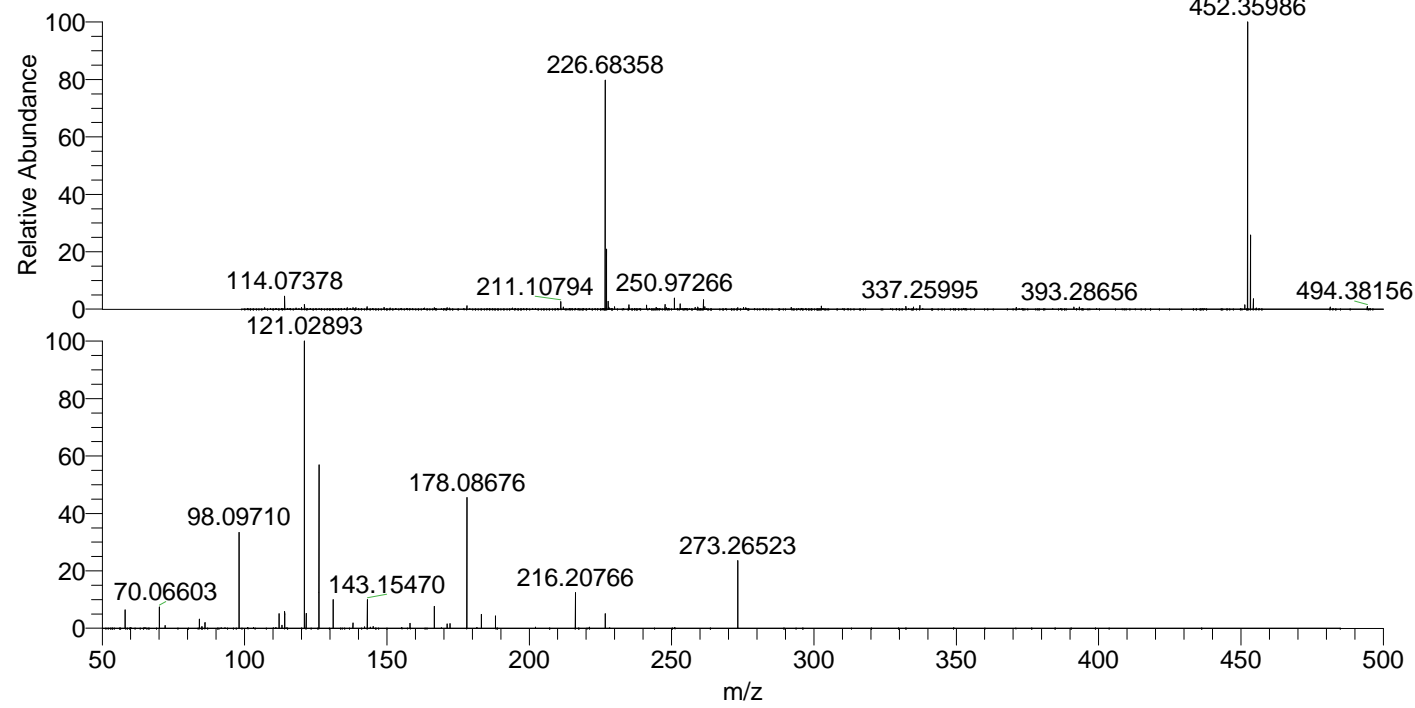
NL: 1.62E7
 Base Peak m/z= 226.68282-226.68508 F: FTMS + p ESI Full ms [100.00-1500.00] MS Aperta19

NL: 1.04E6
 Base Peak m/z= 566.35010-566.35576 F: FTMS + p ESI Full ms [100.00-1500.00] MS Aperta19

NL: 2.44E6
 Base Peak m/z= 50.00000-1500.00000 F: FTMS + p ESI d Full ms2 226.68@hcd35.00 [50.00-480.00] MS Aperta19

Aaperta19#2093-2127 RT: 5.18-5.26 AV: 7
 F: FTMS + p ESI d Full ms2 226.68@h ...
 m/z= 50.00000-1000.00000

m/z	Intensity	Relative
58.06608	96360.3	6.41
70.06603	111390.5	7.41
72.08162	14904.6	0.99
84.08156	48715.6	3.24
85.07680	9828.7	0.65
86.06083	28077.9	1.87
86.09721	29218.6	1.94
98.09710	507926.1	33.79
112.11266	78047.0	5.19
113.10803	15789.3	1.05
114.09192	87520.7	5.82
121.02893	1503395.6	100.00
121.63366	77125.9	5.13
126.12824	855352.3	56.89
131.11837	150835.1	10.03
138.05539	27293.9	1.82
142.12310	7704.2	0.51
143.15470	151027.2	10.05
145.17040	9490.2	0.63
158.16011	25791.6	1.72
166.67312	114505.6	7.62
171.18612	23373.4	1.55
172.18113	23844.9	1.59
178.08676	691884.9	46.02
183.18596	73691.3	4.90
188.17618	64983.2	4.32
216.20766	186080.8	12.38
226.68366	77265.2	5.14
273.26523	355279.0	23.63



NL: 1.97E7
 Aaperta19#2107 RT: 5.21
 AV: 1 T: FTMS + p ESI
 Full lock ms
 [100.00-1500.00]

NL: 1.50E6
 Aaperta19#2090-2132
 RT: 5.18-5.26 AV: 7 F:
 FTMS + p ESI d Full ms2
 226.68@hcd35.00
 [50.00-480.00]