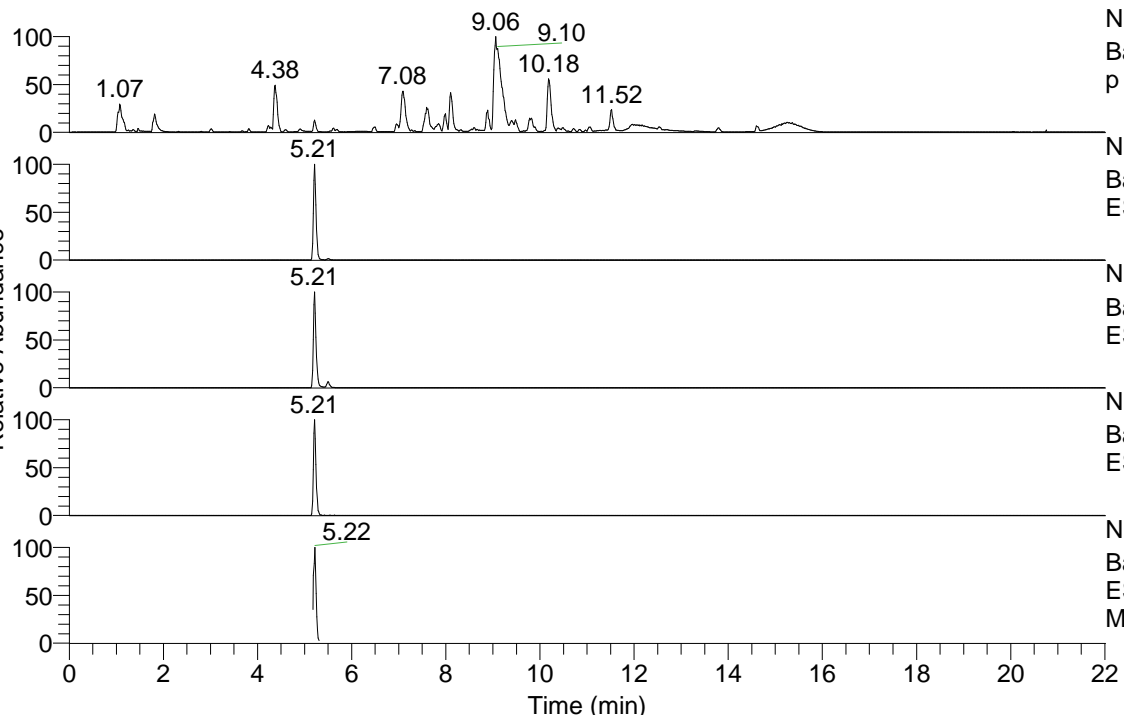


RT: 0.00 - 22.01



NL: 1.54E8  
 Base Peak m/z= 100.00000-1500.00000 F: FTMS + p ESI Full ms [100.00-1500.00] MS Aperta19

NL: 1.98E7  
 Base Peak m/z= 452.35781-452.36233 F: FTMS + p ESI Full ms [100.00-1500.00] MS Aperta19

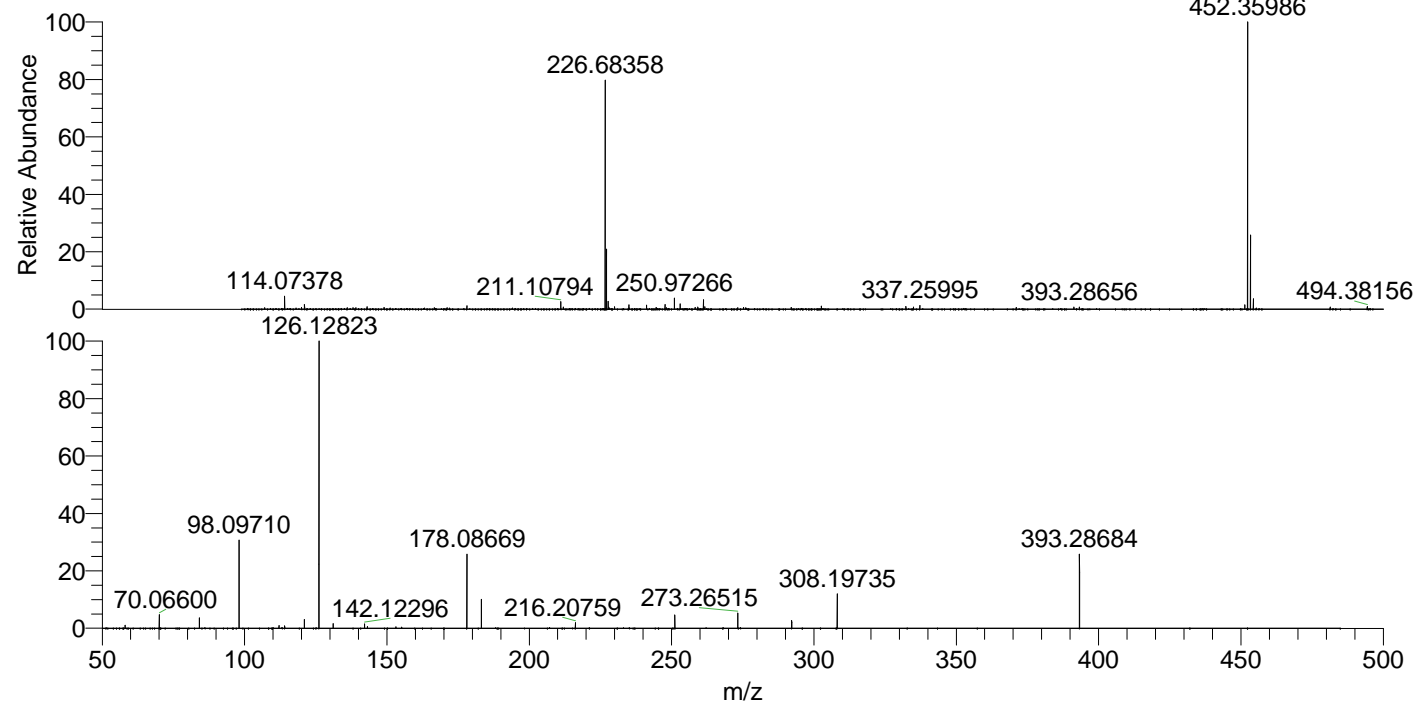
NL: 1.62E7  
 Base Peak m/z= 226.68282-226.68508 F: FTMS + p ESI Full ms [100.00-1500.00] MS Aperta19

NL: 1.04E6  
 Base Peak m/z= 566.35010-566.35576 F: FTMS + p ESI Full ms [100.00-1500.00] MS Aperta19

NL: 5.32E6  
 Base Peak m/z= 50.00000-1500.00000 F: FTMS + p ESI d Full ms2 452.36@hcd35.00 [50.00-480.00] MS Aperta19

Aaperta19#2092-2132 RT: 5.18-5.27 AV: 8  
 F: FTMS + p ESI d Full ms2 452.36@h ...  
 m/z= 50.00000-1000.00000

m/z	Intensity	Relative
58.06602	30171.3	1.05
70.06600	135017.8	4.72
84.08155	104515.1	3.65
98.09710	888544.8	31.06
112.11263	28325.7	0.99
114.09185	22976.1	0.80
121.02890	87505.8	3.06
126.12823	2860544.0	100.00
131.11833	48182.4	1.68
142.12296	45390.8	1.59
143.15474	17489.0	0.61
153.13902	14305.0	0.50
178.08669	751549.9	26.27
183.18602	287990.5	10.07
216.20759	56350.8	1.97
251.13964	135112.6	4.72
273.26515	150905.8	5.28
292.20214	77095.5	2.70
308.19735	341440.8	11.94
393.28684	742182.9	25.95



NL: 1.97E7  
 Aaperta19#2107 RT: 5.21  
 AV: 1 T: FTMS + p ESI  
 Full lock ms  
 [100.00-1500.00]

NL: 2.86E6  
 Aaperta19#2089-2132  
 RT: 5.18-5.27 AV: 8 F:  
 FTMS + p ESI d Full ms2  
 452.36@hcd35.00  
 [50.00-480.00]