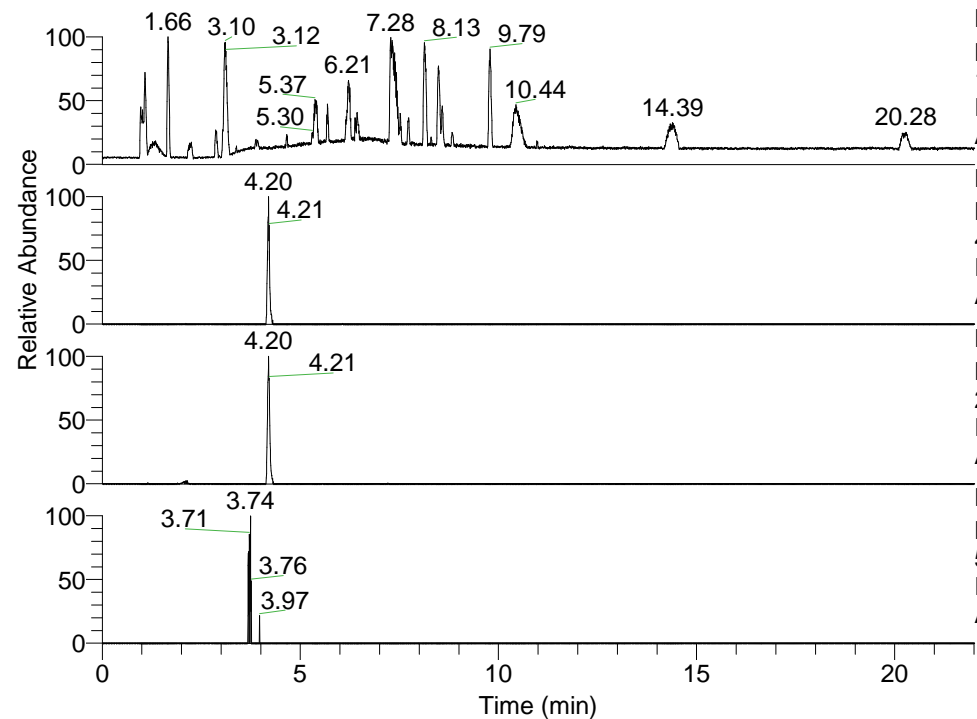


RT: 0.00 - 22.01



NL: 1.41E8
 Base Peak m/z=
 100.00000-1500.00000 F: FTMS + p
 ESI Full ms [100.00-1500.00] MS
 Aperta_HDX

NL: 7.32E5
 Base Peak m/z=
 458.39544-458.40002 F: FTMS + p
 ESI Full ms [100.00-1500.00] MS
 Aperta_HDX

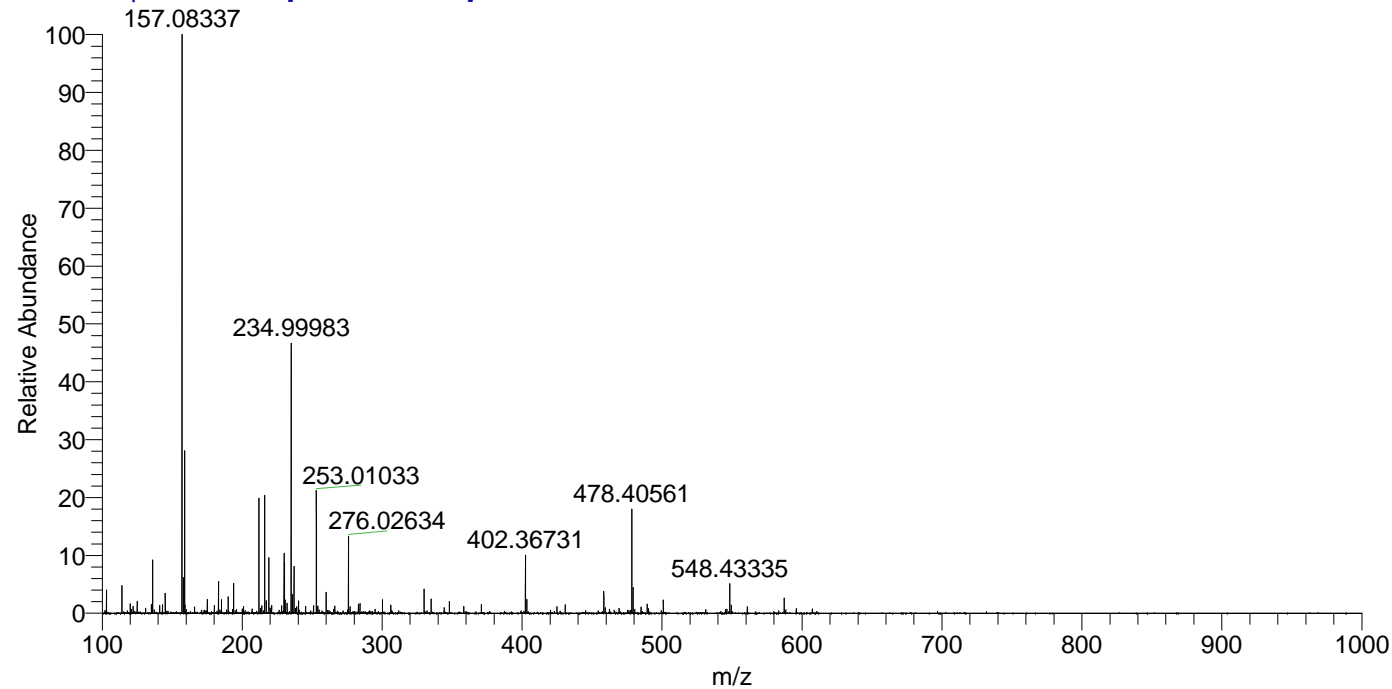
NL: 1.65E6
 Base Peak m/z=
 230.20476-230.20706 F: FTMS + p
 ESI Full ms [100.00-1500.00] MS
 Aperta_HDX

NL: 2.41E4
 Base Peak m/z=
 573.39400-573.39974 F: FTMS + p
 ESI Full ms [100.00-1500.00] MS
 Aperta_HDX

Aperta_HDX#682 RT: 4.20
 T: FTMS + p ESI Full ms [100.00-1500.00]
 m/z= 458.00000-459.00000

| m/z | Intensity | Relative | Delta (ppm) | Composition |
|-----------|-----------|----------|-------------|---|
| 458.39655 | 732235.8 | 100.00 | -1.38 | C ₂₄ H ₄₀ ² H ₆ O ₃ N ₅ |
| | | | 2.00 | C ₂₄ H ₃₈ ² H ₇ O ₃ N ₅ |
| | | | -4.76 | C ₂₄ H ₄₂ ² H ₅ O ₃ N ₅ |
| | | | 5.38 | C ₂₄ H ₃₆ ² H ₈ O ₃ N ₅ |
| | | | -8.13 | C ₂₄ H ₄₄ ² H ₄ O ₃ N ₅ |
| | | | 8.75 | C ₂₄ H ₃₄ ² H ₉ O ₃ N ₅ |

Aperta_HDX #682 RT: 4.20 AV: 1 NL: 1.89E7
 T: FTMS + p ESI Full ms [100.00-1500.00]



Aperta_HDX #682 RT: 4.20 AV: 1 NL: 7.14E5
 T: FTMS + p ESI Full ms [100.00-1500.00]

