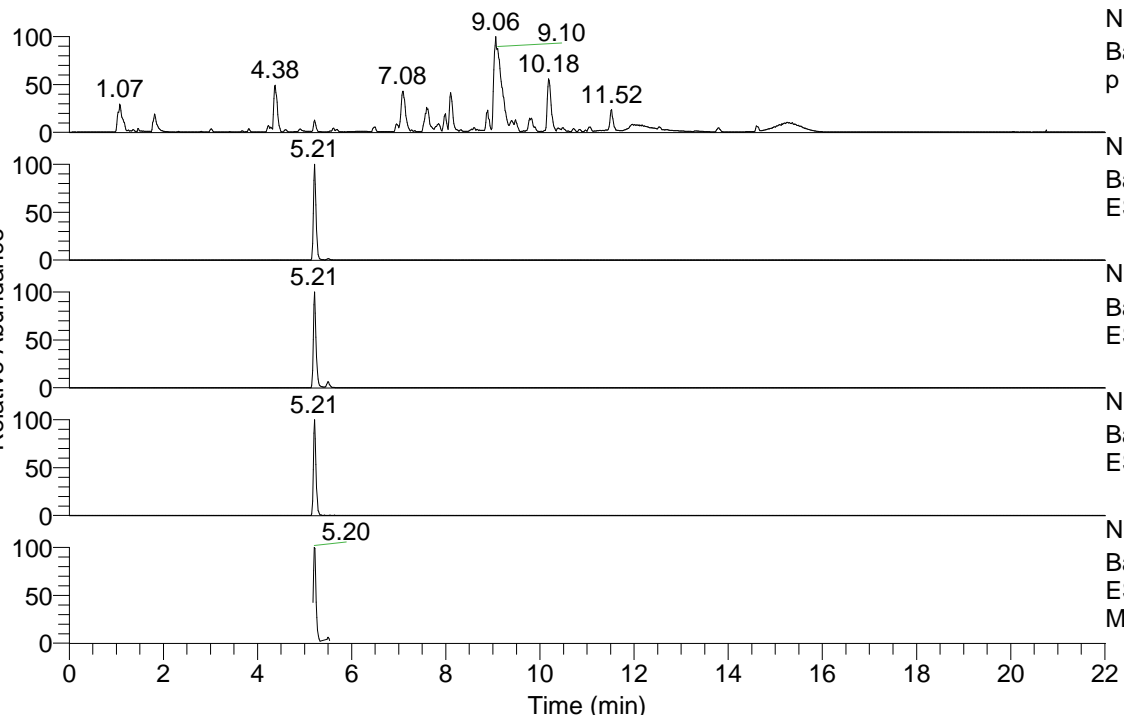


RT: 0.00 - 22.01



NL: 1.54E8
 Base Peak m/z= 100.00000-1500.00000 F: FTMS + p ESI Full ms [100.00-1500.00] MS Aperta19

NL: 1.98E7
 Base Peak m/z= 452.35781-452.36233 F: FTMS + p ESI Full ms [100.00-1500.00] MS Aperta19

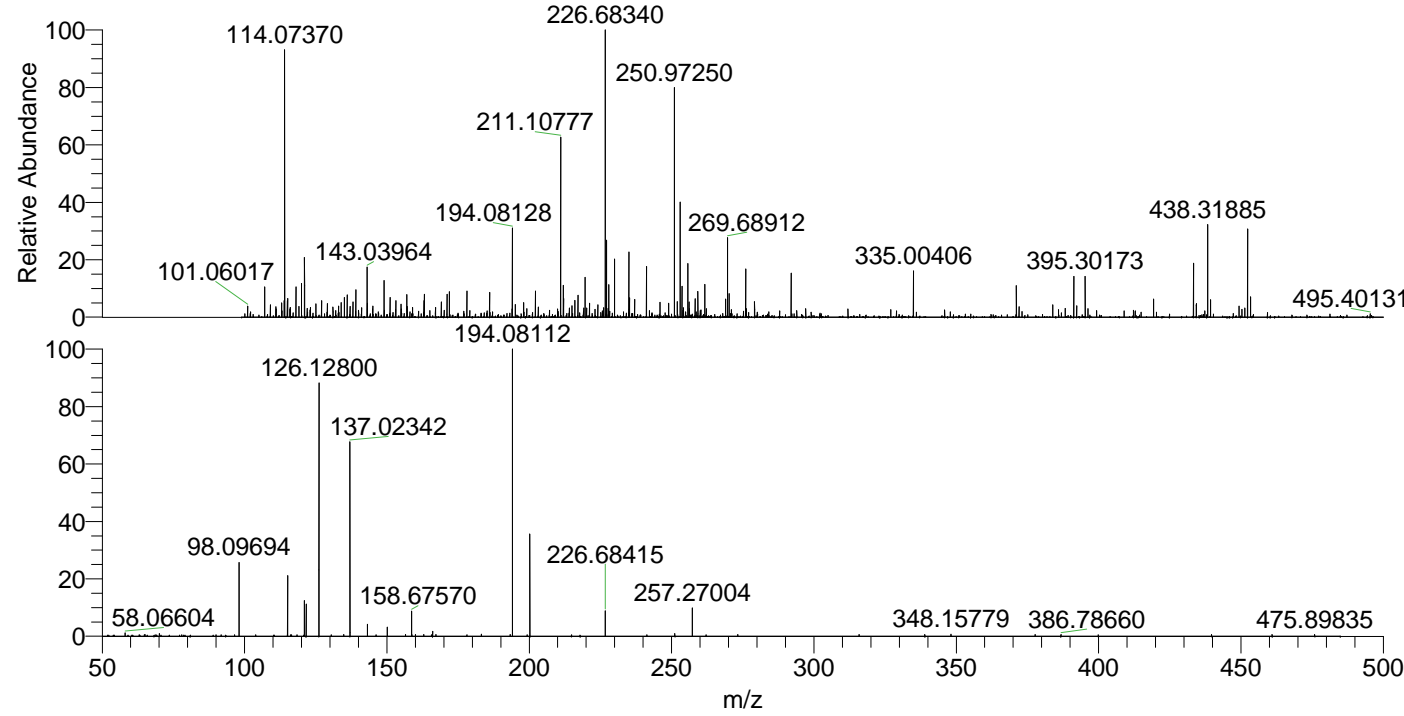
NL: 1.62E7
 Base Peak m/z= 226.68282-226.68508 F: FTMS + p ESI Full ms [100.00-1500.00] MS Aperta19

NL: 1.04E6
 Base Peak m/z= 566.35010-566.35576 F: FTMS + p ESI Full ms [100.00-1500.00] MS Aperta19

NL: 2.44E6
 Base Peak m/z= 50.00000-1500.00000 F: FTMS + p ESI d Full ms2 226.68@hcd35.00 [50.00-480.00] MS Aperta19

Aperta19#2213-2235 RT: 5.48-5.53 AV: F: FTMS + p ESI d Full ms2 226.68 ... m/z= 50.00000-1000.00000

m/z	Intensity	Relative
58.06604	1352.3	1.21
64.76466	566.4	0.51
64.96749	671.5	0.60
65.01766	569.6	0.51
68.87402	569.6	0.51
70.06586	1086.3	0.97
77.91219	581.2	0.52
91.75672	580.5	0.52
98.09694	28459.8	25.40
115.05769	604.7	0.54
115.12333	23612.7	21.07
116.53075	582.3	0.52
118.46559	606.3	0.54
121.02879	13760.3	12.28
121.63353	12456.0	11.12
126.12800	98874.3	88.23
126.13610	2645.6	2.36
134.84464	649.6	0.58
137.02342	76392.2	68.17
143.15454	4670.3	4.17
150.16236	3638.8	3.25
156.56759	689.5	0.62
158.67570	9824.6	8.77
158.74741	613.4	0.55
160.01223	632.2	0.56
162.92446	678.9	0.61
165.65349	574.7	0.51
166.05026	1855.7	1.66
167.21295	671.5	0.60
178.08617	604.6	0.54
183.18677	831.8	0.74
193.32595	690.5	0.62
194.08112	112063.8	100.00
199.25593	620.3	0.55
200.21208	40320.0	35.98
214.85028	622.4	0.56
226.68415	9888.6	8.82
241.31875	567.4	0.51
251.13953	1026.8	0.92
257.27004	10939.7	9.76
262.12143	593.3	0.53
273.26413	696.6	0.62
315.89498	632.6	0.56
338.96622	643.3	0.57
348.15779	781.0	0.70
377.72834	675.8	0.60
386.78660	644.6	0.58
399.89980	589.9	0.53
439.68357	638.0	0.57
460.95173	632.2	0.56
475.89835	647.7	0.58



NL: 1.03E6
 Aperta19#2221 RT: 5.50 AV: 1 T: FTMS + p ESI Full lock ms [100.00-1500.00]

NL: 1.11E5
 Aperta19#2209-2236 RT: 5.48-5.53 AV: 5 F: FTMS + p ESI d Full ms2 226.68@hcd35.00 [50.00-480.00]