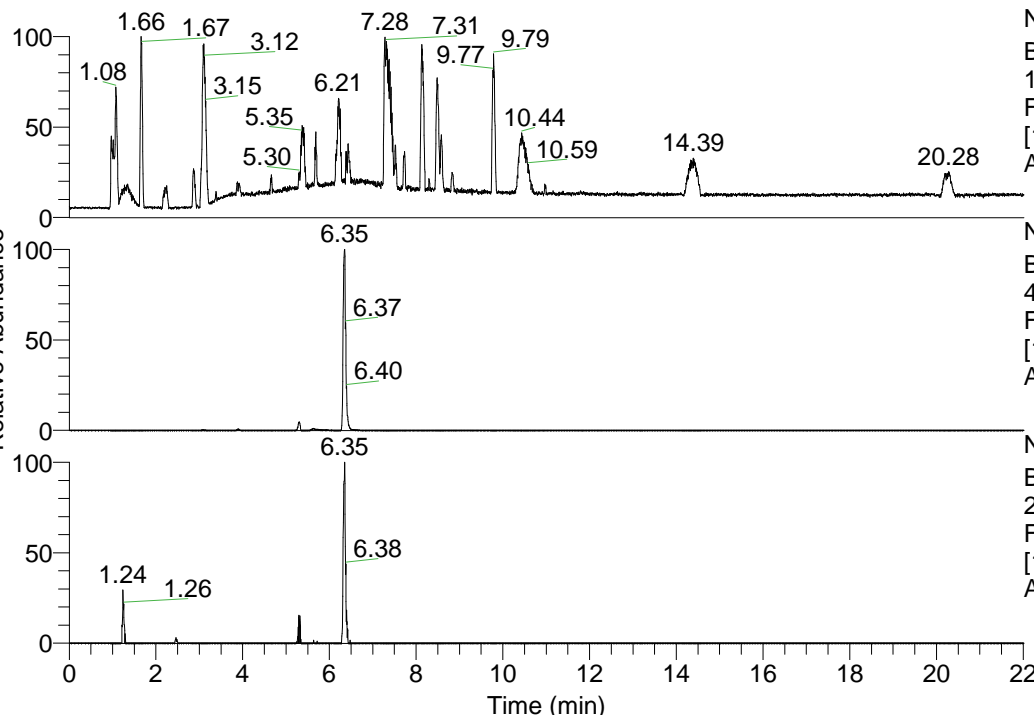


RT: 0.00 - 22.01



NL: 1.41E8
 Base Peak m/z=
 100.00000-1500.00000 F:
 FTMS + p ESI Full ms
 [100.00-1500.00] MS
 Aperta_HDX

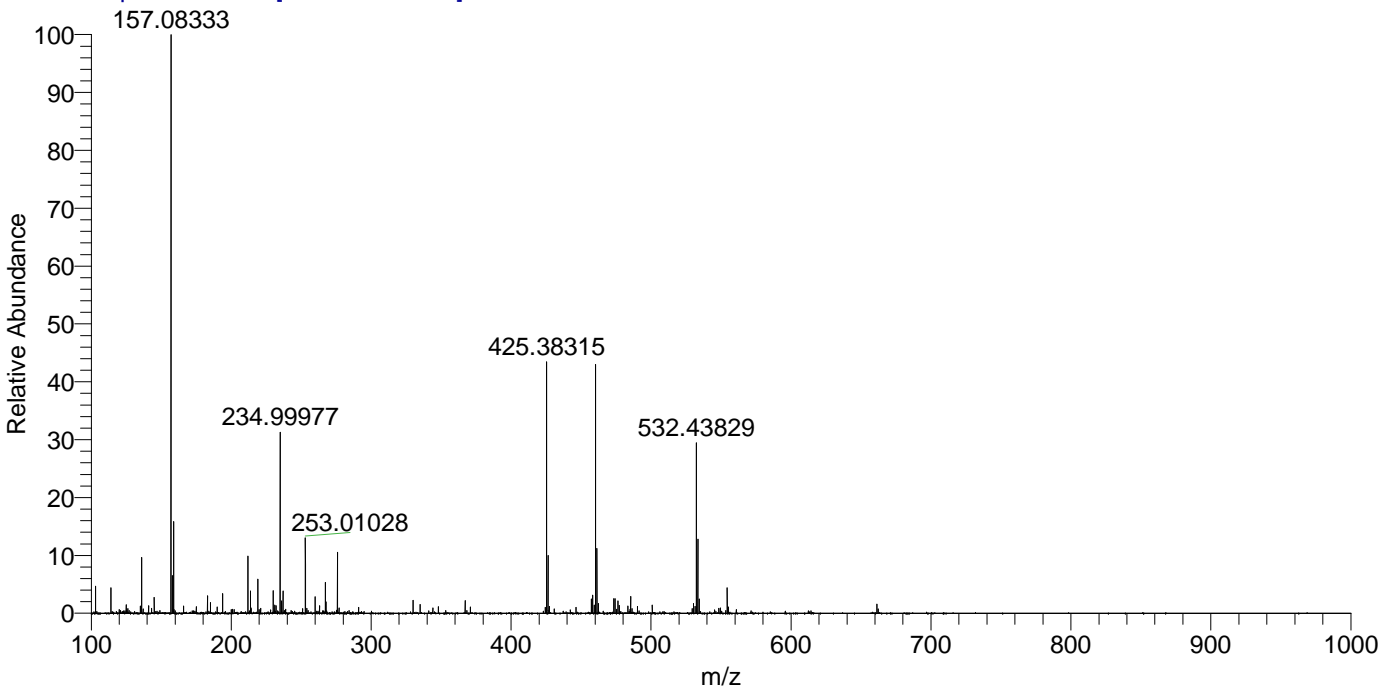
NL: 1.27E7
 Base Peak m/z=
 460.35747-460.36207 F:
 FTMS + p ESI Full ms
 [100.00-1500.00] MS
 Aperta_HDX

NL: 4.33E5
 Base Peak m/z=
 231.18578-231.18810 F:
 FTMS + p ESI Full ms
 [100.00-1500.00] MS
 Aperta_HDX

Aperta_HDX#1045 RT: 6.35
 T: FTMS + p ESI Full ms [100.00-1500.00]
 m/z= 460.00000-461.00000

m/z	Intensity	Relative	Delta (ppm)	Composition
460.35846	12671153.0	100.00	-1.65	C ₂₂ H ₃₀ ² H ₉ O ₄ N ₆
			1.71	C ₂₂ H ₂₈ ² H ₁₀ O ₄ N ₆
			-5.02	C ₂₂ H ₃₂ ² H ₈ O ₄ N ₆
			-8.38	C ₂₂ H ₃₄ ² H ₇ O ₄ N ₆

Aperta_HDX #1045 RT: 6.35 AV: 1 NL: 2.93E7
 T: FTMS + p ESI Full ms [100.00-1500.00]



Aperta_HDX #1045 RT: 6.35 AV: 1 NL: 1.26E7
 T: FTMS + p ESI Full ms [100.00-1500.00]

