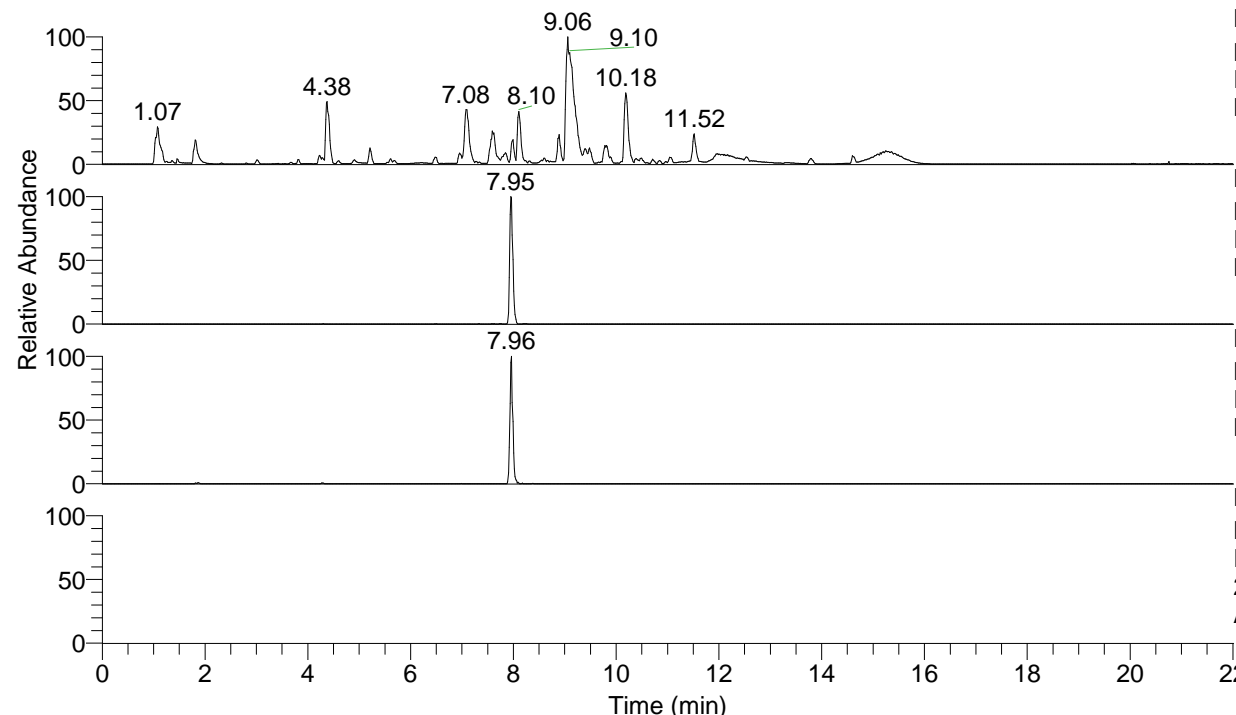


RT: 0.00 - 22.01



NL: 1.54E8
 Base Peak m/z= 100.00000-1500.00000 F:
 FTMS + p ESI Full ms [100.00-1500.00]
 MS Aperta19

NL: 6.44E6
 Base Peak m/z= 451.30102-451.30554 F:
 FTMS + p ESI Full ms [100.00-1500.00]
 MS Aperta19

NL: 1.47E6
 Base Peak m/z= 226.15442-226.15668 F:
 FTMS + p ESI Full ms [100.00-1500.00]
 MS Aperta19

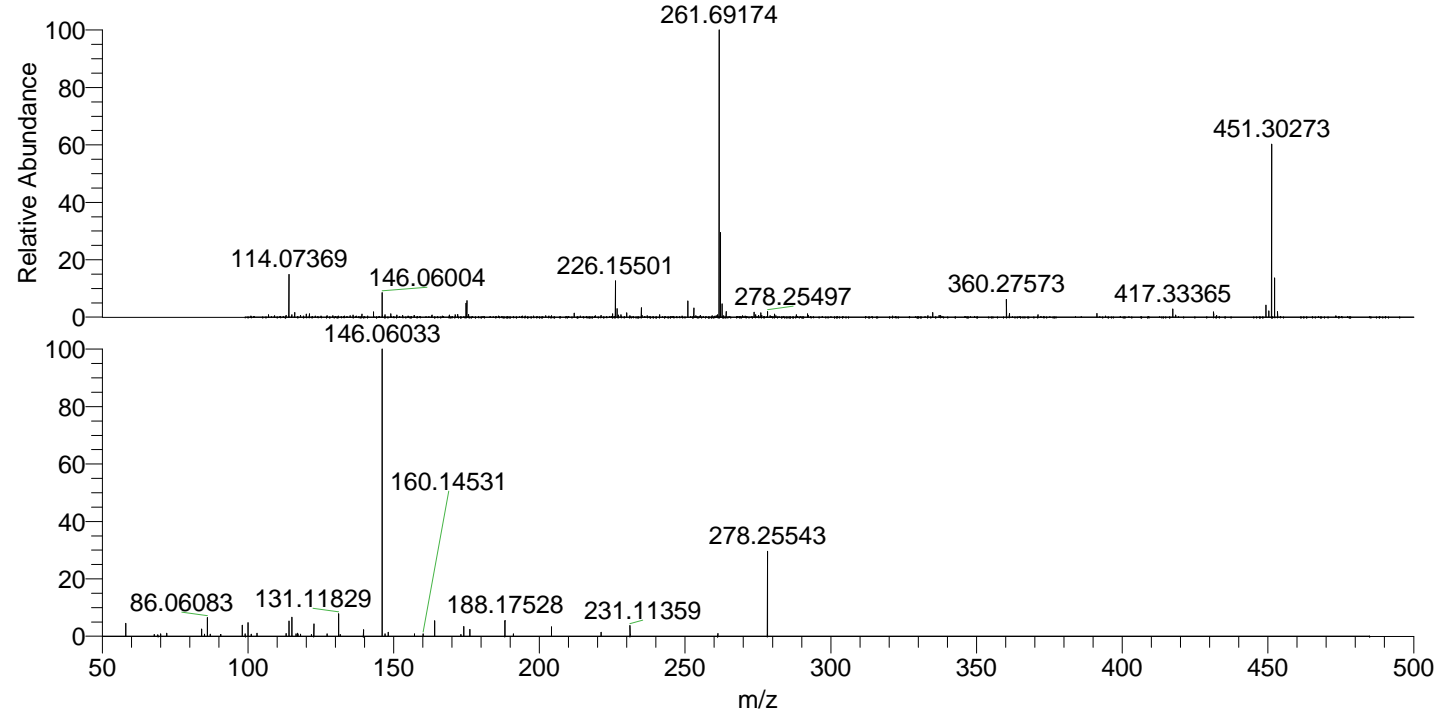
NL: 4.64E5
 Base Peak m/z= 50.00000-1500.00000 F:
 FTMS + p ESI d Full ms2
 226.16@hcd35.00 [50.00-480.00] MS
 Aperta19

Aperta19#3216 RT: 7.96

F: FTMS + p ESI d Full ms2 226.16 ...

m/z= 50.00000-1000.00000

m/z	Intensity	Relative
58.06612	20551.2	4.43
67.83484	2781.8	0.60
69.10902	2420.4	0.52
70.06597	3705.0	0.80
72.08151	4721.1	1.02
84.08135	12054.1	2.60
85.07672	3491.1	0.75
86.06083	31242.8	6.74
87.09245	3466.1	0.75
90.59715	2601.9	0.56
90.69709	2576.2	0.56
98.09692	18191.7	3.92
99.09280	3832.8	0.83
100.07605	21997.0	4.74
101.10838	3426.7	0.74
103.08735	5293.4	1.14
113.10785	4685.8	1.01
114.09183	25889.3	5.58
115.12357	30737.8	6.63
116.50430	4110.4	0.89
117.10275	4838.0	1.04
117.17928	2739.4	0.59
118.06595	3660.1	0.79
121.79195	3122.3	0.67
122.60530	20551.9	4.43
127.12311	3801.7	0.82
131.11829	36988.5	7.98
131.70944	2978.7	0.64
139.63127	10665.9	2.30
146.06033	463803.2	100.00
147.06354	3943.0	0.85
148.14523	6891.0	1.49
157.13425	3779.0	0.81
160.14531	4023.0	0.87
164.07062	25483.6	5.49
173.04907	2950.6	0.64
174.05548	15946.2	3.44
176.13974	11878.4	2.56
188.17528	26059.2	5.62
191.05881	3939.7	0.85
204.17125	16159.3	3.48
221.19781	6557.4	1.41
231.11359	17239.5	3.72
261.22928	4531.6	0.98
278.25543	142949.2	30.82



NL: 1.07E7
 Aperta19#3211 RT:
 7.95 AV: 1 T: FTMS +
 p ESI Full lock ms
 [100.00-1500.00]

NL: 4.60E5
 Aperta19#3132 RT:
 7.96 AV: 1 F: FTMS +
 p ESI d Full ms2
 226.16@hcd35.00
 [50.00-480.00]