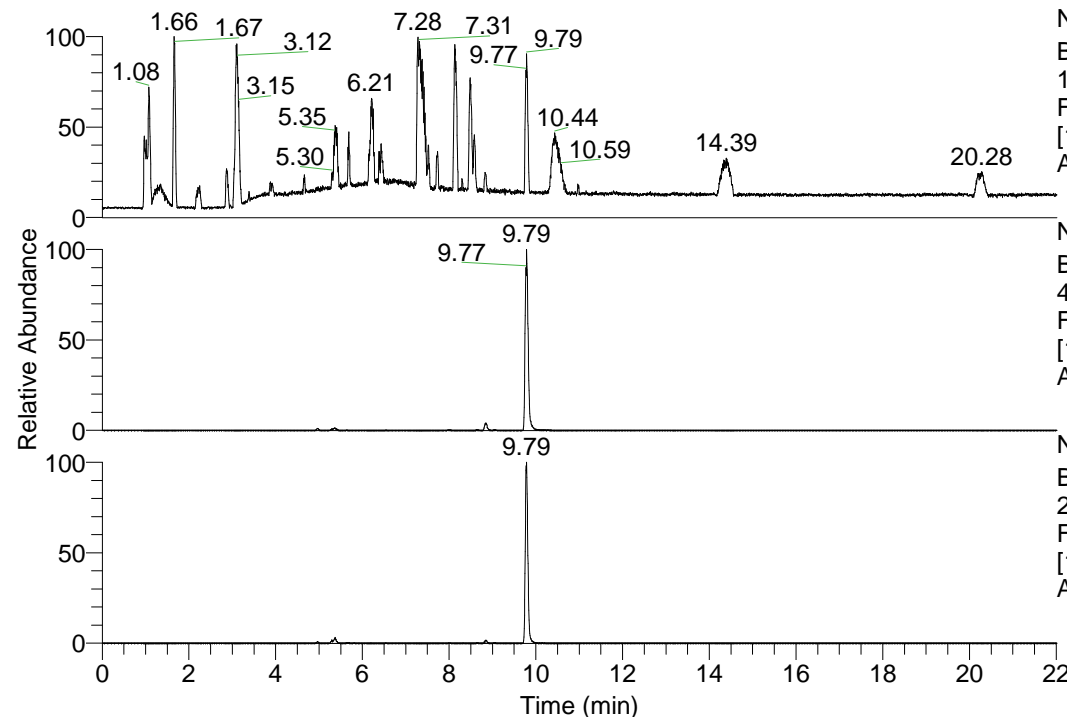


RT: 0.00 - 22.01



NL: 1.41E8  
 Base Peak m/z=  
 100.00000-1500.00000 F:  
 FTMS + p ESI Full ms  
 [100.00-1500.00] MS  
 Aperta\_HDX

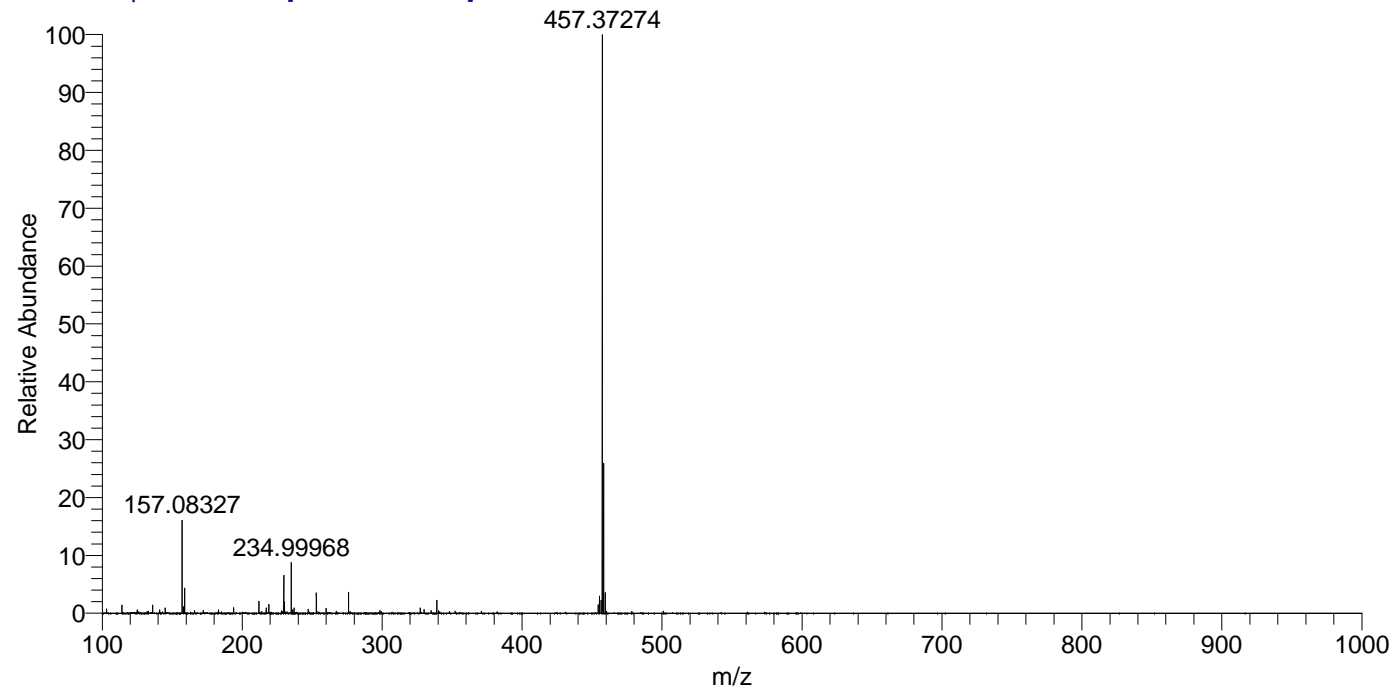
NL: 1.27E8  
 Base Peak m/z=  
 457.37194-457.37652 F:  
 FTMS + p ESI Full ms  
 [100.00-1500.00] MS  
 Aperta\_HDX

NL: 8.37E6  
 Base Peak m/z=  
 229.69302-229.69532 F:  
 FTMS + p ESI Full ms  
 [100.00-1500.00] MS  
 Aperta\_HDX

Aperta\_HDX#1638 RT: 9.79  
 T: FTMS + p ESI Full ms [100.00-1500.00]  
 m/z= 457.00000-458.00000

m/z	Intensity	Relative	Delta (ppm)	Composition
457.37274	117488384.0	100.00	1.33	C <sub>23</sub> H <sub>31</sub> <sup>2</sup> H <sub>9</sub> O <sub>3</sub> N <sub>6</sub>
			-2.05	C <sub>23</sub> H <sub>33</sub> <sup>2</sup> H <sub>8</sub> O <sub>3</sub> N <sub>6</sub>
			4.72	C <sub>23</sub> H <sub>29</sub> <sup>2</sup> H <sub>10</sub> O <sub>3</sub> N <sub>6</sub>
			-5.44	C <sub>23</sub> H <sub>35</sub> <sup>2</sup> H <sub>7</sub> O <sub>3</sub> N <sub>6</sub>
			-8.82	C <sub>23</sub> H <sub>37</sub> <sup>2</sup> H <sub>6</sub> O <sub>3</sub> N <sub>6</sub>

Aperta\_HDX #1638 RT: 9.79 AV: 1 NL: 1.17E8  
 T: FTMS + p ESI Full ms [100.00-1500.00]



Aperta\_HDX #1638 RT: 9.79 AV: 1 NL: 1.17E8  
 T: FTMS + p ESI Full ms [100.00-1500.00]

