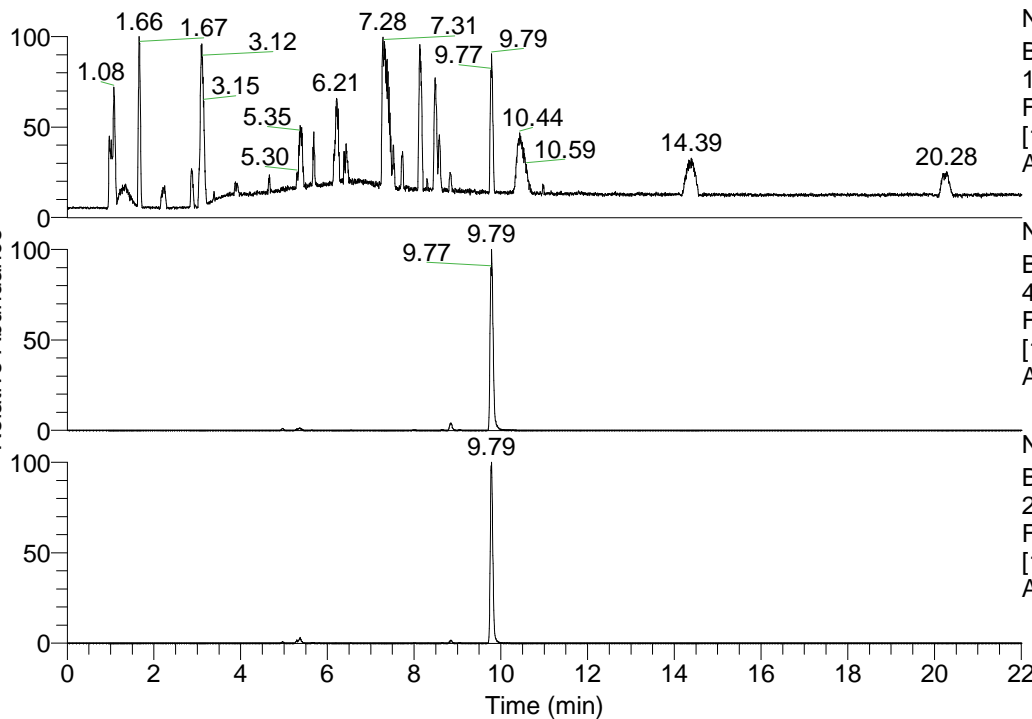


RT: 0.00 - 22.01



NL: 1.41E8
 Base Peak m/z=
 100.00000-1500.00000 F:
 FTMS + p ESI Full ms
 [100.00-1500.00] MS
 Aperta_HDX

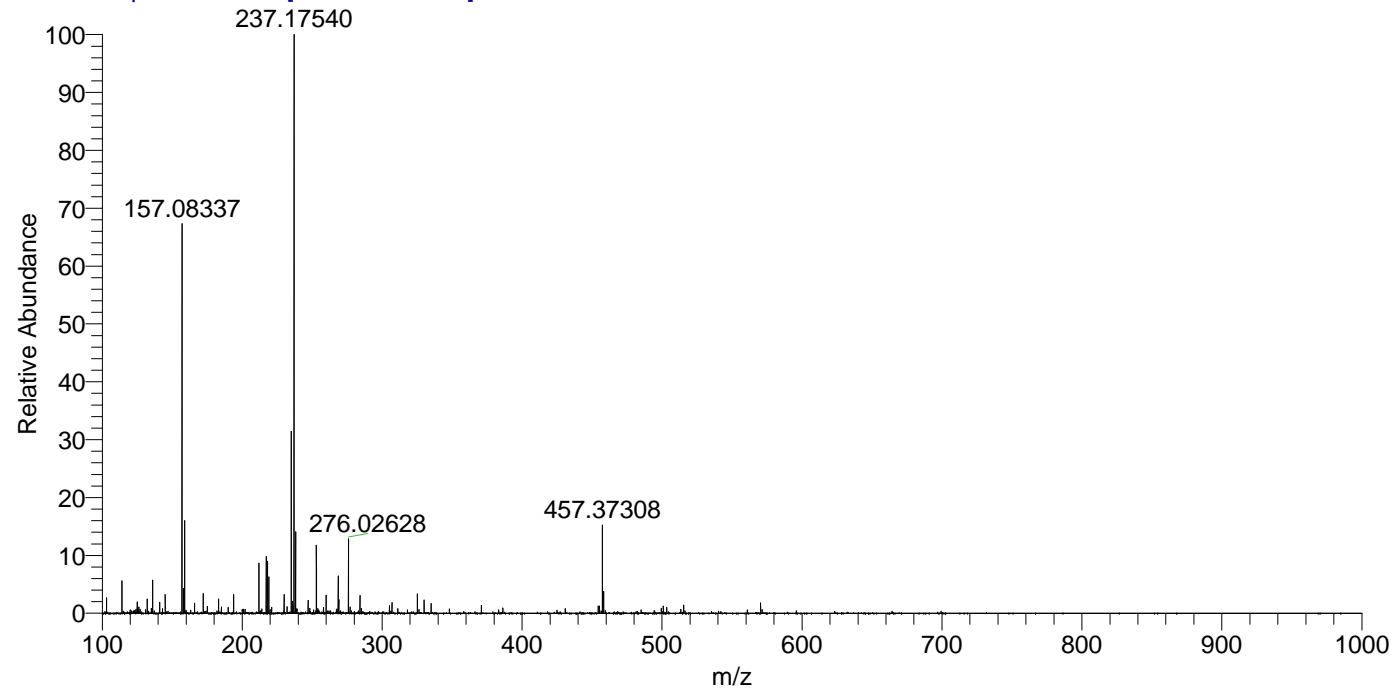
NL: 1.27E8
 Base Peak m/z=
 457.37194-457.37652 F:
 FTMS + p ESI Full ms
 [100.00-1500.00] MS
 Aperta_HDX

NL: 8.37E6
 Base Peak m/z=
 229.69302-229.69532 F:
 FTMS + p ESI Full ms
 [100.00-1500.00] MS
 Aperta_HDX

Aaperta_HDX#1479 RT: 8.85
 T: FTMS + p ESI Full ms [100.00-1500.00]
 m/z = 457.00000-458.00000

m/z	Intensity	Relative	Delta (ppm)	Composition
457.37308	4908615.0	100.00	-1.32	C ₂₃ H ₃₃ ² H ₈ O ₃ N ₆
			2.07	C ₂₃ H ₃₁ ² H ₉ O ₃ N ₆
			-4.70	C ₂₃ H ₃₅ ² H ₇ O ₃ N ₆
			5.45	C ₂₃ H ₂₉ ² H ₁₀ O ₃ N ₆
			-8.09	C ₂₃ H ₃₇ ² H ₆ O ₃ N ₆

Aaperta_HDX #1479 RT: 8.85 AV: 1 NL: 3.15E7
 T: FTMS + p ESI Full ms [100.00-1500.00]



Aaperta_HDX #1479 RT: 8.85 AV: 1 NL: 4.80E6
 T: FTMS + p ESI Full ms [100.00-1500.00]

