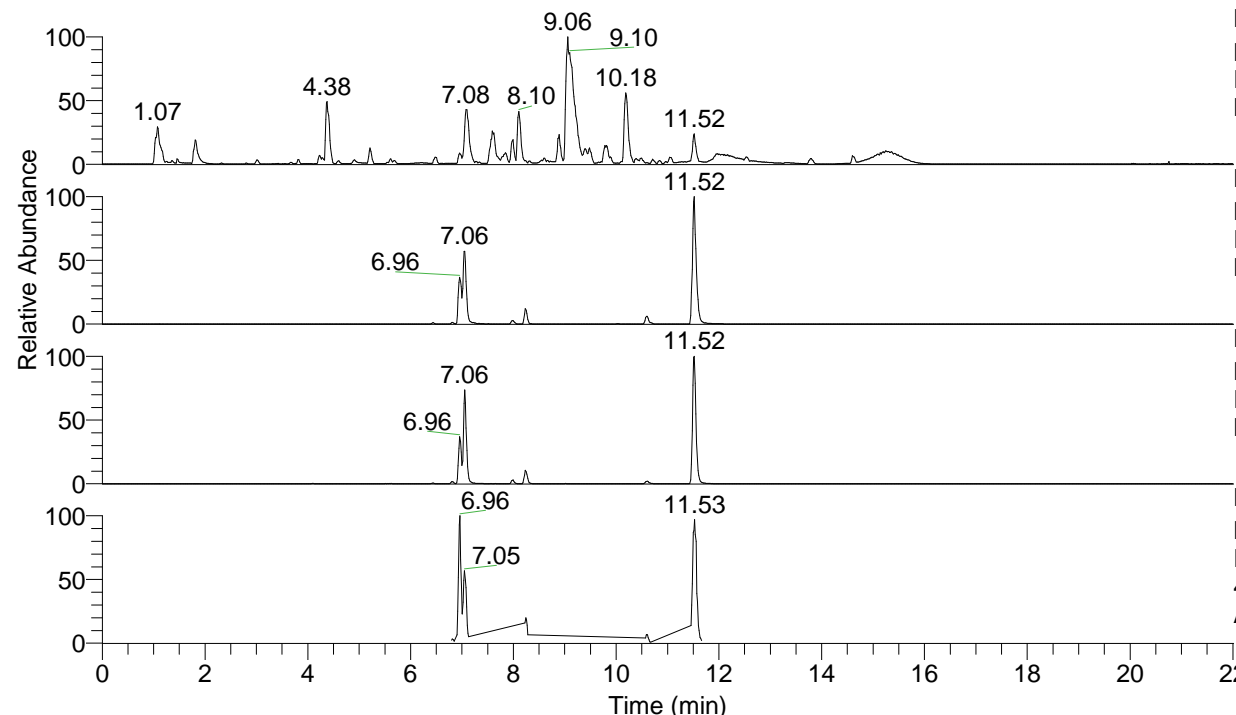


RT: 0.00 - 22.01



NL: 1.54E8
 Base Peak m/z= 100.00000-1500.00000 F:
 FTMS + p ESI Full ms [100.00-1500.00]
 MS Aperta19

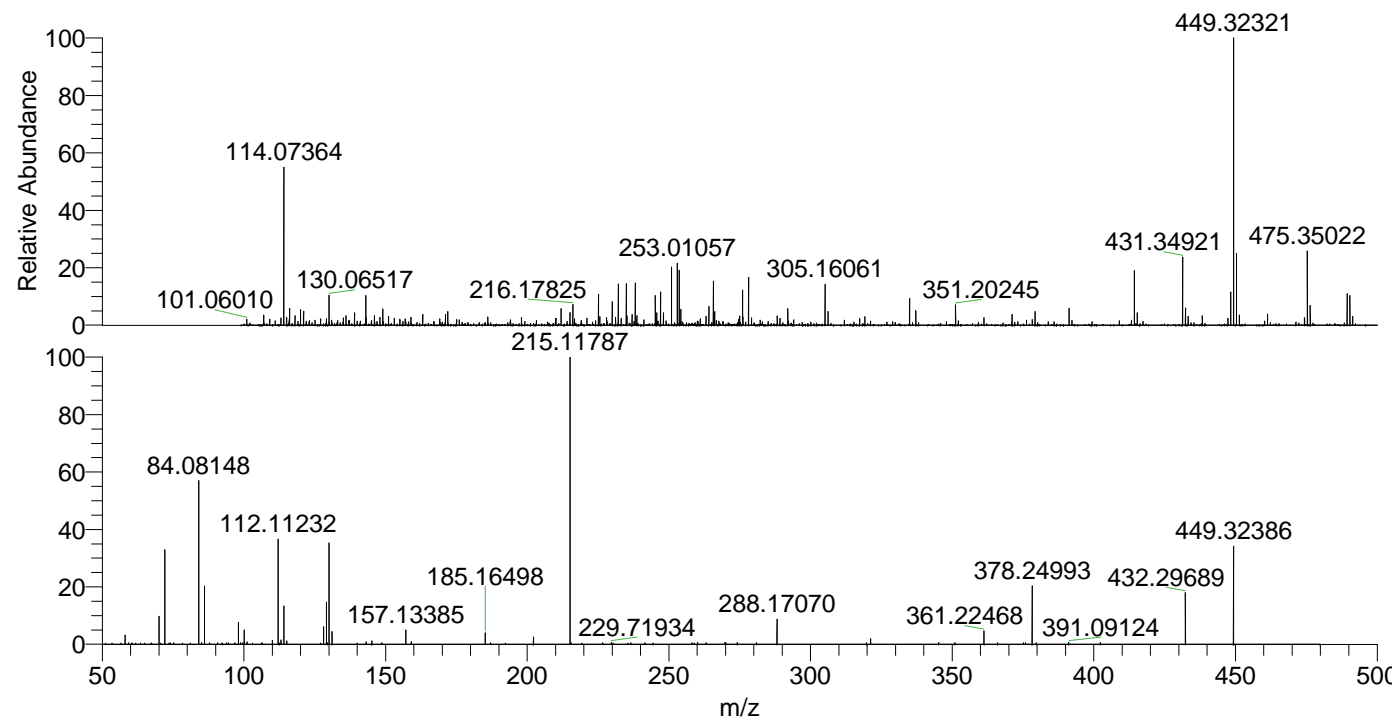
NL: 3.67E7
 Base Peak m/z= 449.32176-449.32626 F:
 FTMS + p ESI Full ms [100.00-1500.00]
 MS Aperta19

NL: 1.21E7
 Base Peak m/z= 225.16479-225.16705 F:
 FTMS + p ESI Full ms [100.00-1500.00]
 MS Aperta19

NL: 3.02E6
 Base Peak m/z= 50.00000-1500.00000 F:
 FTMS + p ESI d Full ms2
 449.32@hcd35.00 [50.00-475.00] MS
 Aperta19

Aperta19#4296-4322 RT: 10.57-10.64
 F: FTMS + p ESI d Full ms2 449.32 ...
 m/z= 50.00000-1000.00000

m/z	Intensity	Relative
58.06599	4674.7	3.13
70.06596	14630.6	9.80
72.08153	49573.4	33.21
84.08148	85259.6	57.12
85.07700	877.1	0.59
86.06066	30172.0	20.21
90.68114	758.4	0.51
98.09697	11449.8	7.67
100.07637	7506.0	5.03
101.10810	1240.3	0.83
110.09696	2139.8	1.43
112.07634	4737.5	3.17
112.11232	54861.9	36.76
113.10802	2358.6	1.58
114.09185	19780.8	13.25
115.12303	1748.3	1.17
128.10744	9158.0	6.14
129.13893	21826.0	14.62
130.06528	52534.5	35.20
131.11803	6709.2	4.49
143.11798	1204.7	0.81
145.13356	1766.1	1.18
157.13385	7361.1	4.93
159.09177	1475.6	0.99
185.16498	6006.8	4.02
202.19202	3699.2	2.48
215.11787	149262.4	100.00
226.65488	761.0	0.51
229.71934	848.3	0.57
241.55246	780.6	0.52
258.16287	786.3	0.53
260.13866	912.3	0.61
269.79392	860.4	0.58
270.16089	783.4	0.52
274.15445	883.8	0.59
288.17070	13036.5	8.73
319.77774	778.9	0.52
321.19282	3003.2	2.01
345.22779	942.6	0.63
350.98544	828.3	0.55
361.22468	6980.0	4.68
375.19891	772.9	0.52
378.24993	30702.7	20.57
379.64784	797.1	0.53
391.09124	875.1	0.59
402.28153	858.6	0.58
432.29689	27108.5	18.16
449.32386	52772.6	35.36



NL: 2.20E6
 Aperta19#4303 RT:
 10.59 AV: 1 T: FTMS + p
 ESI Full lock ms
 [100.00-1500.00]

NL: 1.49E5
 Aperta19#4292-4328 RT:
 10.57-10.64 AV: 6 F:
 FTMS + p ESI d Full ms2
 449.32@hcd35.00
 [50.00-475.00]