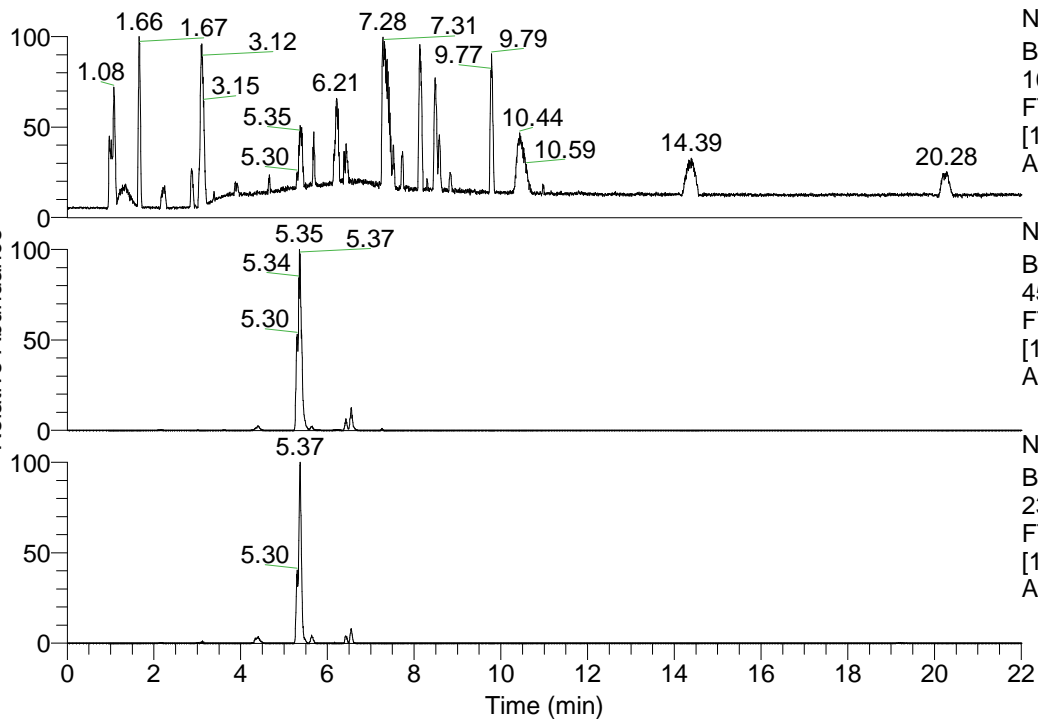


RT: 0.00 - 22.01



NL: 1.41E8
 Base Peak m/z=
 100.00000-1500.00000 F:
 FTMS + p ESI Full ms
 [100.00-1500.00] MS
 Aperta_HDX

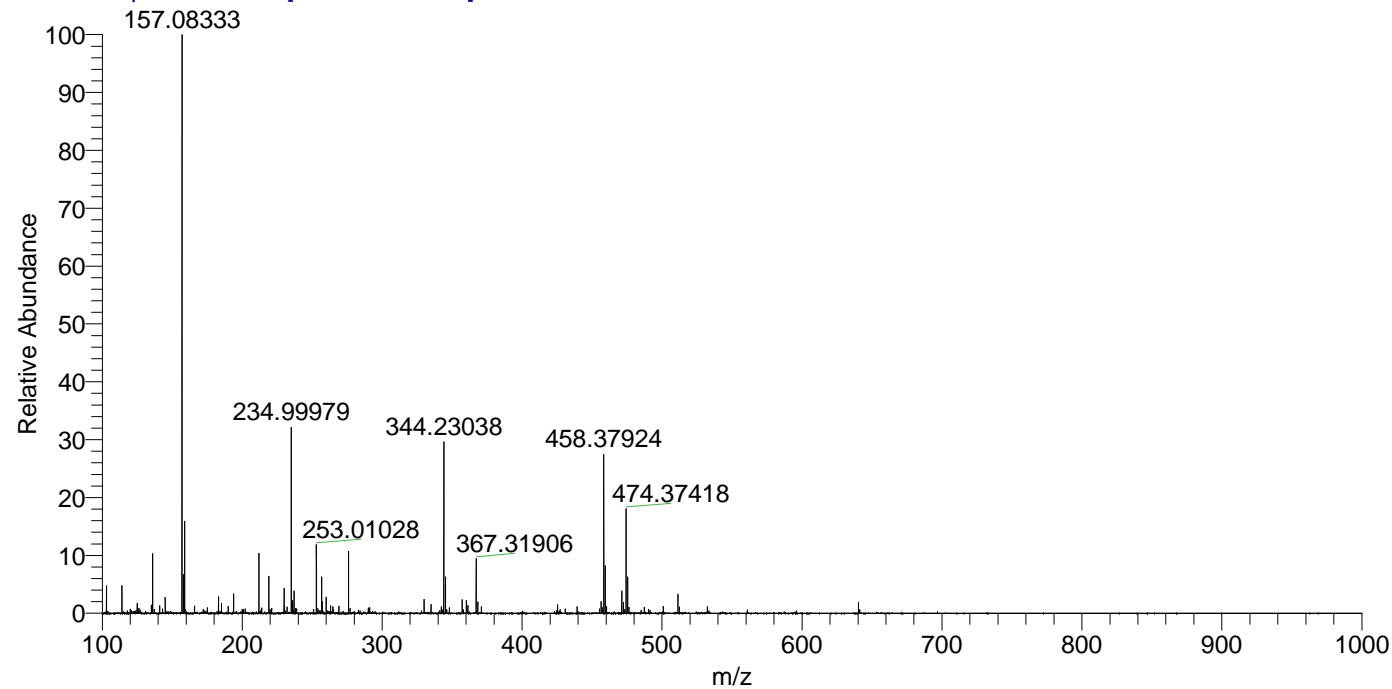
NL: 6.65E7
 Base Peak m/z=
 458.37822-458.38280 F:
 FTMS + p ESI Full ms
 [100.00-1500.00] MS
 Aperta_HDX

NL: 5.05E6
 Base Peak m/z=
 230.19615-230.19845 F:
 FTMS + p ESI Full ms
 [100.00-1500.00] MS
 Aperta_HDX

Aperta_HDX#1080 RT: 6.55
 T: FTMS + p ESI Full ms [100.00-1500.00]
 m/z= 458.00000-459.00000

m/z	Intensity	Relative	Delta (ppm)	Composition
458.37924	7803188.5	100.00	-1.56	C ₂₃ H ₃₂ ² H ₉ O ₃ N ₆
			1.82	C ₂₃ H ₃₀ ² H ₁₀ O ₃ N ₆
			-4.94	C ₂₃ H ₃₄ ² H ₈ O ₃ N ₆
			-8.31	C ₂₃ H ₃₆ ² H ₇ O ₃ N ₆

Aperta_HDX #1080 RT: 6.55 AV: 1 NL: 2.80E7
 T: FTMS + p ESI Full ms [100.00-1500.00]



Aperta_HDX #1080 RT: 6.55 AV: 1 NL: 7.68E6
 T: FTMS + p ESI Full ms [100.00-1500.00]

