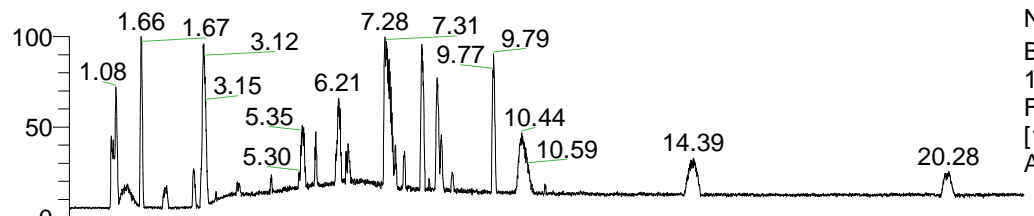


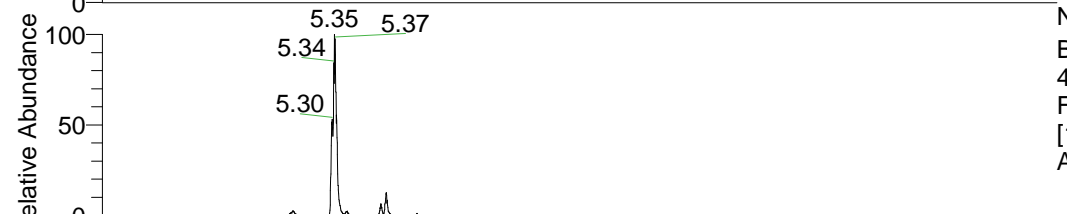
RT: 0.00 - 22.01



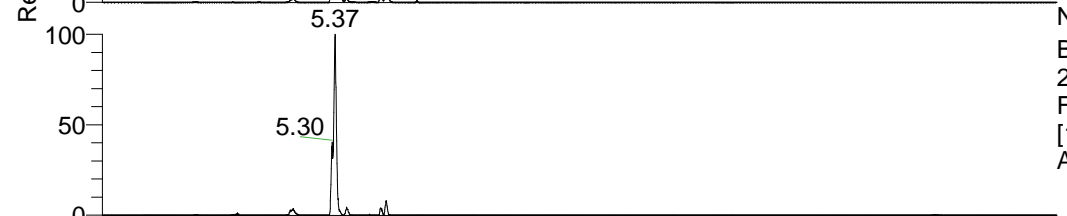
NL: 1.41E8
 Base Peak m/z=
 100.00000-1500.00000 F:
 FTMS + p ESI Full ms
 [100.00-1500.00] MS
 Aperta_HDX

Aaperta_HDX#873 RT: 5.35
 T: FTMS + p ESI Full ms [100.00-1500.00]
 m/z= 458.00000-459.00000

| m/z | Intensity | Relative | Delta (ppm) | Composition |
|-----------|------------|----------|-------------|--|
| 458.37924 | 48536760.0 | 100.00 | -1.56 | C ₂₃ H ₃₂ ² H ₉ O ₃ N ₆ |
| | | | 1.82 | C ₂₃ H ₃₀ ² H ₁₀ O ₃ N ₆ |
| | | | -4.94 | C ₂₃ H ₃₄ ² H ₈ O ₃ N ₆ |
| | | | -8.31 | C ₂₃ H ₃₆ ² H ₇ O ₃ N ₆ |

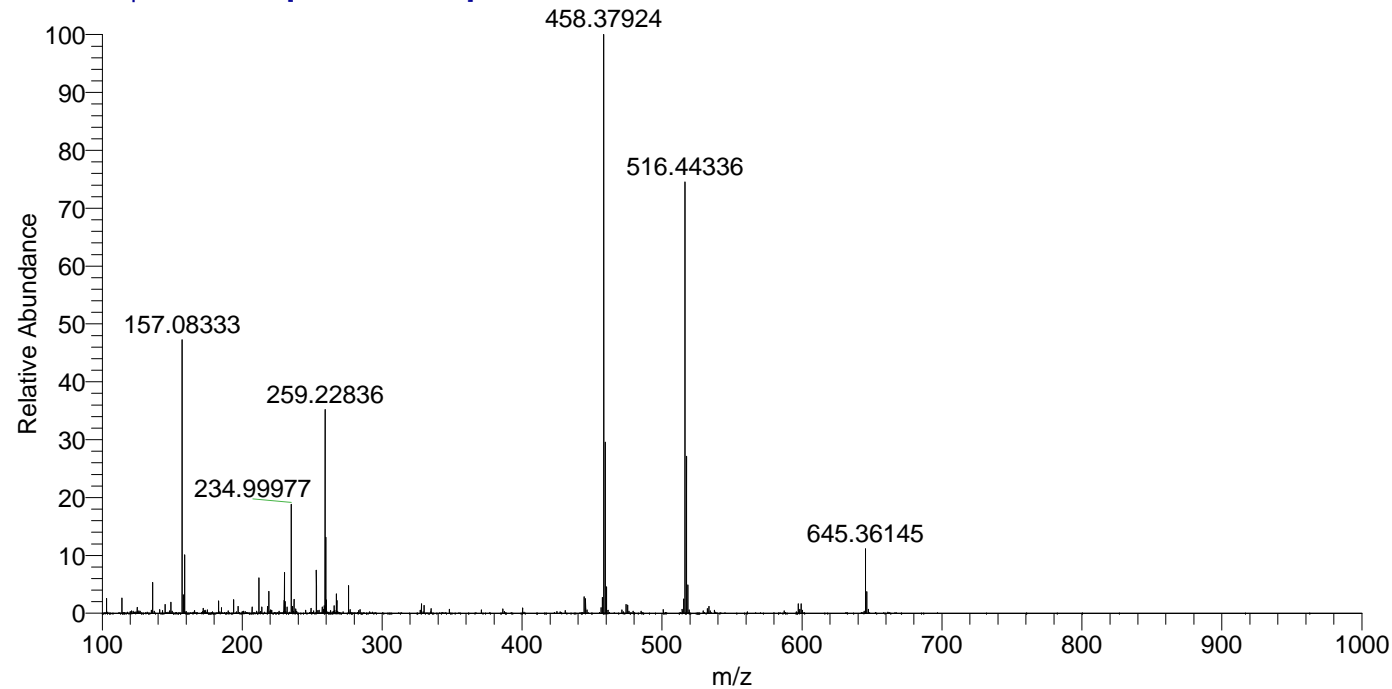


NL: 6.65E7
 Base Peak m/z=
 458.37822-458.38280 F:
 FTMS + p ESI Full ms
 [100.00-1500.00] MS
 Aperta_HDX



NL: 5.05E6
 Base Peak m/z=
 230.19615-230.19845 F:
 FTMS + p ESI Full ms
 [100.00-1500.00] MS
 Aperta_HDX

Aaperta_HDX #873 RT: 5.35 AV: 1 NL: 4.80E7
 T: FTMS + p ESI Full ms [100.00-1500.00]



Aaperta_HDX #873 RT: 5.35 AV: 1 NL: 4.80E7
 T: FTMS + p ESI Full ms [100.00-1500.00]

