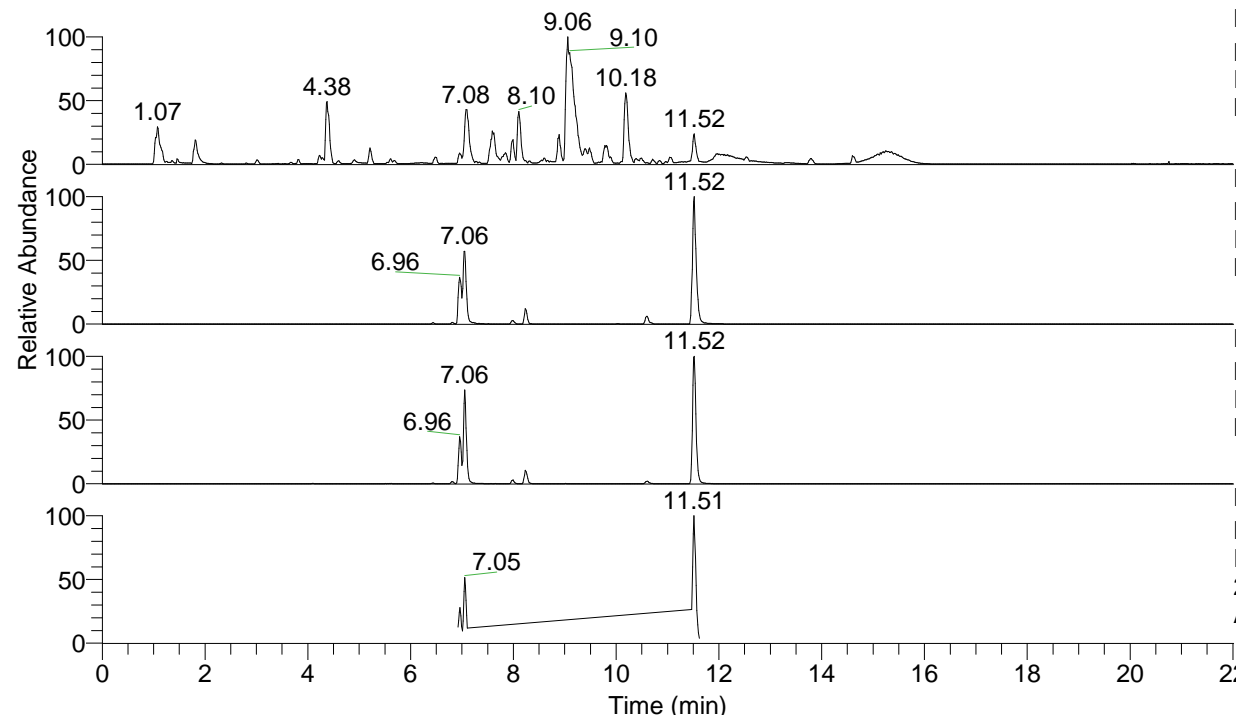


RT: 0.00 - 22.01



NL: 1.54E8  
 Base Peak m/z= 100.00000-1500.00000 F:  
 FTMS + p ESI Full ms [100.00-1500.00]  
 MS Aperta19

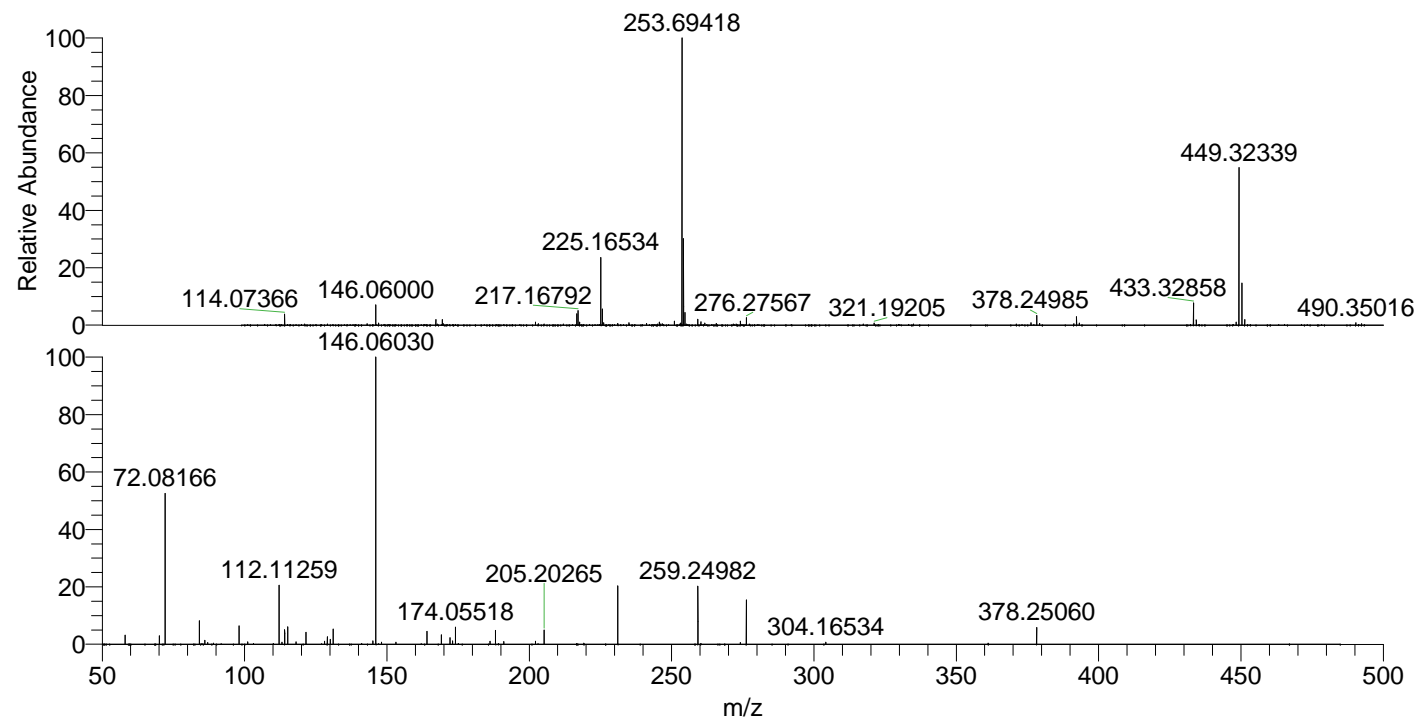
NL: 3.67E7  
 Base Peak m/z= 449.32176-449.32626 F:  
 FTMS + p ESI Full ms [100.00-1500.00]  
 MS Aperta19

NL: 1.21E7  
 Base Peak m/z= 225.16479-225.16705 F:  
 FTMS + p ESI Full ms [100.00-1500.00]  
 MS Aperta19

NL: 4.05E6  
 Base Peak m/z= 50.00000-1500.00000 F:  
 FTMS + p ESI d Full ms2  
 225.16@hcd35.00 [50.00-480.00] MS  
 Aperta19

Aperta19#2837-2861 RT: 7.04-7.09 AV: 5  
 F: FTMS + p ESI d Full ms2 225.16@h ...  
 m/z= 50.00000-1000.00000

m/z	Intensity	Relative
58.06610	47384.8	3.18
70.06604	45276.3	3.04
72.08166	784515.6	52.71
84.08161	123427.8	8.29
86.06079	20511.0	1.38
87.09235	8412.5	0.57
98.09711	96096.2	6.46
101.10789	12477.7	0.84
112.11259	306921.6	20.62
113.10777	10682.7	0.72
114.09198	74909.0	5.03
115.12346	90648.1	6.09
118.06566	12149.9	0.82
121.61532	62652.4	4.21
128.10745	15410.2	1.04
129.13903	38442.2	2.58
130.12866	27066.3	1.82
131.11823	80090.7	5.38
145.05243	17127.7	1.15
146.06030	1488366.1	100.00
148.14451	11925.0	0.80
153.13871	11150.9	0.75
164.07084	67779.1	4.55
169.17026	50872.2	3.42
172.18094	33316.9	2.24
173.04744	17552.4	1.18
174.05518	89150.1	5.99
186.19670	16006.5	1.08
188.17606	71857.2	4.83
191.05764	14277.0	0.96
202.19156	16783.1	1.13
205.20265	74696.4	5.02
231.11306	304631.4	20.47
259.24982	304886.6	20.48
274.15504	9051.5	0.61
276.27640	233675.9	15.70
304.16534	10974.2	0.74
378.25060	87824.5	5.90



NL: 3.64E7  
 Aperta19#2845 RT: 7.06  
 AV: 1 T: FTMS + p ESI  
 Full lock ms  
 [100.00-1500.00]

NL: 1.49E6  
 Aperta19#2832-2861  
 RT: 7.04-7.09 AV: 5 F:  
 FTMS + p ESI d Full ms2  
 225.16@hcd35.00  
 [50.00-480.00]