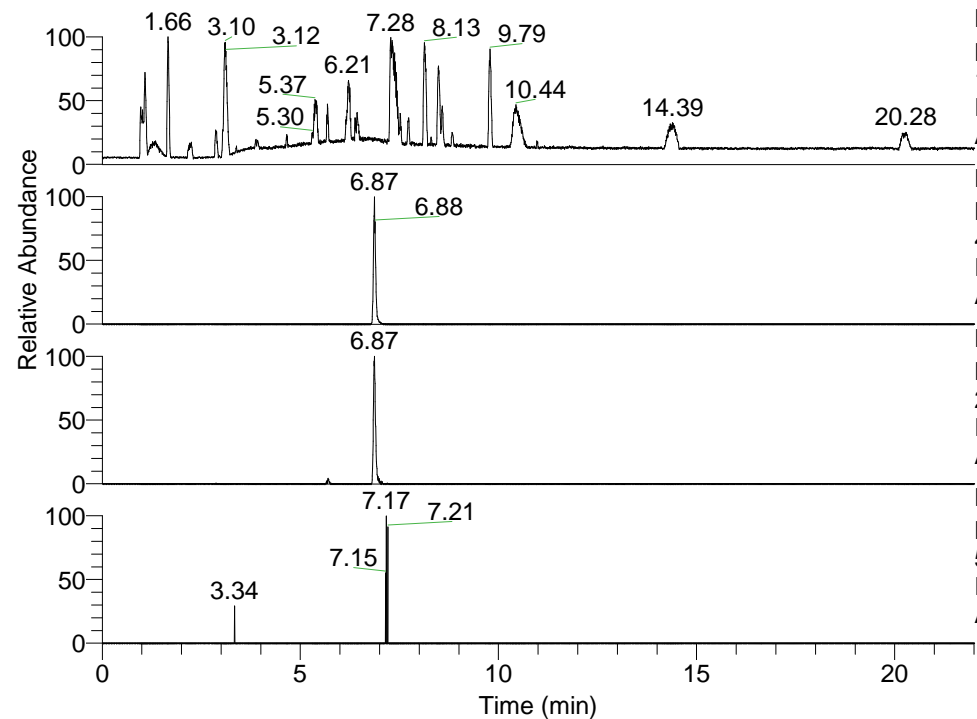


RT: 0.00 - 22.01



NL: 1.41E8  
 Base Peak m/z=  
 100.00000-1500.00000 F: FTMS + p  
 ESI Full ms [100.00-1500.00] MS  
 Aperta\_HDX

NL: 4.06E6  
 Base Peak m/z=  
 453.35788-453.36242 F: FTMS + p  
 ESI Full ms [100.00-1500.00] MS  
 Aperta\_HDX

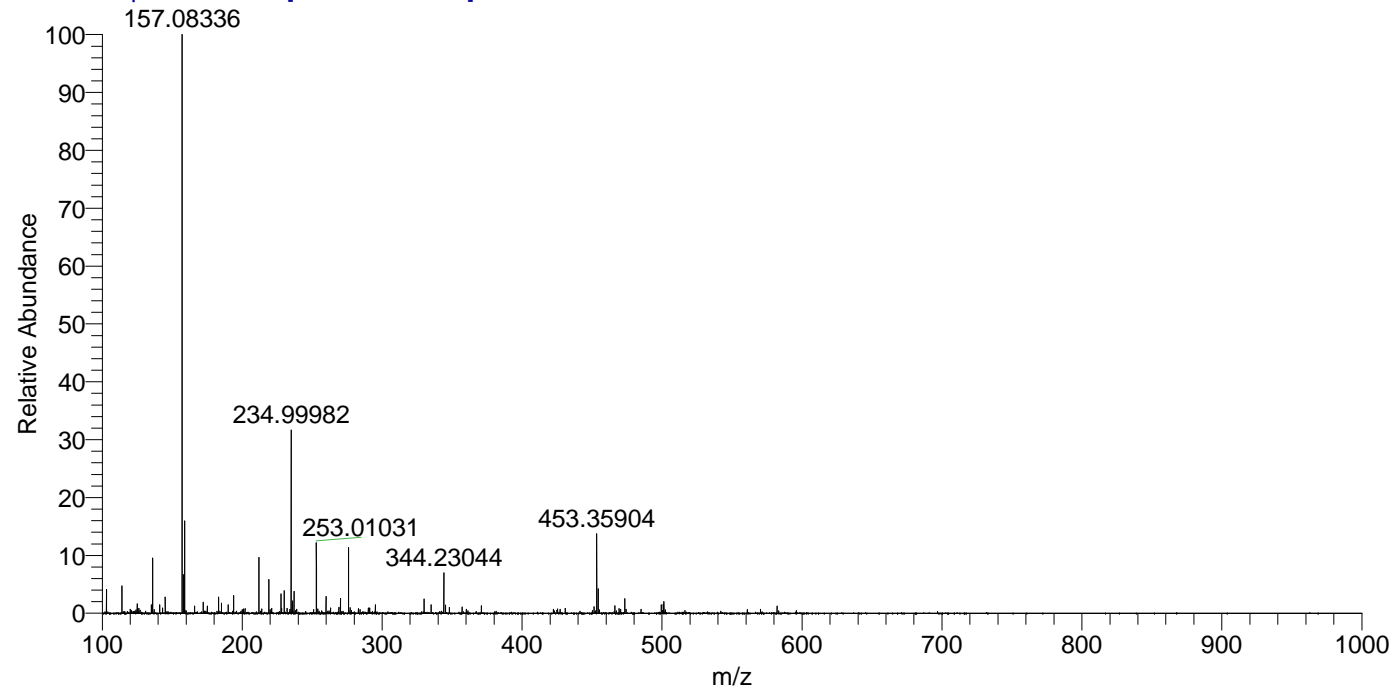
NL: 9.60E5  
 Base Peak m/z=  
 227.68599-227.68827 F: FTMS + p  
 ESI Full ms [100.00-1500.00] MS  
 Aperta\_HDX

NL: 9.99E3  
 Base Peak m/z=  
 562.31882-562.32444 F: FTMS + p  
 ESI Full ms [100.00-1500.00] MS  
 Aperta\_HDX

Aperta\_HDX#1134 RT: 6.87  
 T: FTMS + p ESI Full ms [100.00-1500.00]  
 m/z= 453.00000-454.00000

m/z	Intensity	Relative	Delta (ppm)	Composition
453.35904	4063373.0	100.00	-1.24	C <sub>24</sub> H <sub>37</sub> <sup>2</sup> H <sub>5</sub> O <sub>3</sub> N <sub>5</sub>
			2.18	C <sub>24</sub> H <sub>35</sub> <sup>2</sup> H <sub>6</sub> O <sub>3</sub> N <sub>5</sub>
			-4.65	C <sub>24</sub> H <sub>39</sub> <sup>2</sup> H <sub>4</sub> O <sub>3</sub> N <sub>5</sub>
			5.59	C <sub>24</sub> H <sub>33</sub> <sup>2</sup> H <sub>7</sub> O <sub>3</sub> N <sub>5</sub>
			-8.07	C <sub>24</sub> H <sub>41</sub> <sup>2</sup> H <sub>3</sub> O <sub>3</sub> N <sub>5</sub>
			9.01	C <sub>24</sub> H <sub>31</sub> <sup>2</sup> H <sub>8</sub> O <sub>3</sub> N <sub>5</sub>

Aperta\_HDX #1134 RT: 6.87 AV: 1 NL: 2.87E7  
 T: FTMS + p ESI Full ms [100.00-1500.00]



Aperta\_HDX #1134 RT: 6.87 AV: 1 NL: 3.93E6  
 T: FTMS + p ESI Full ms [100.00-1500.00]

