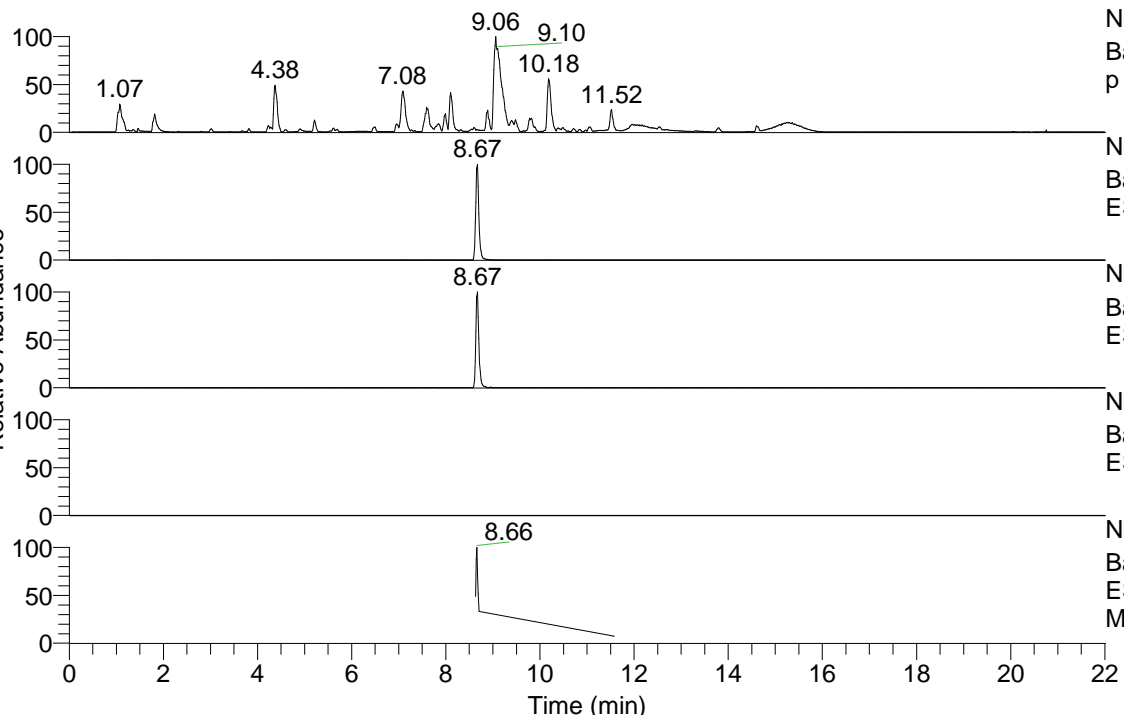


RT: 0.00 - 22.01



NL: 1.54E8
 Base Peak m/z= 100.00000-1500.00000 F: FTMS + p ESI Full ms [100.00-1500.00] MS Aperta19

NL: 4.93E6
 Base Peak m/z= 448.32653-448.33101 F: FTMS + p ESI Full ms [100.00-1500.00] MS Aperta19

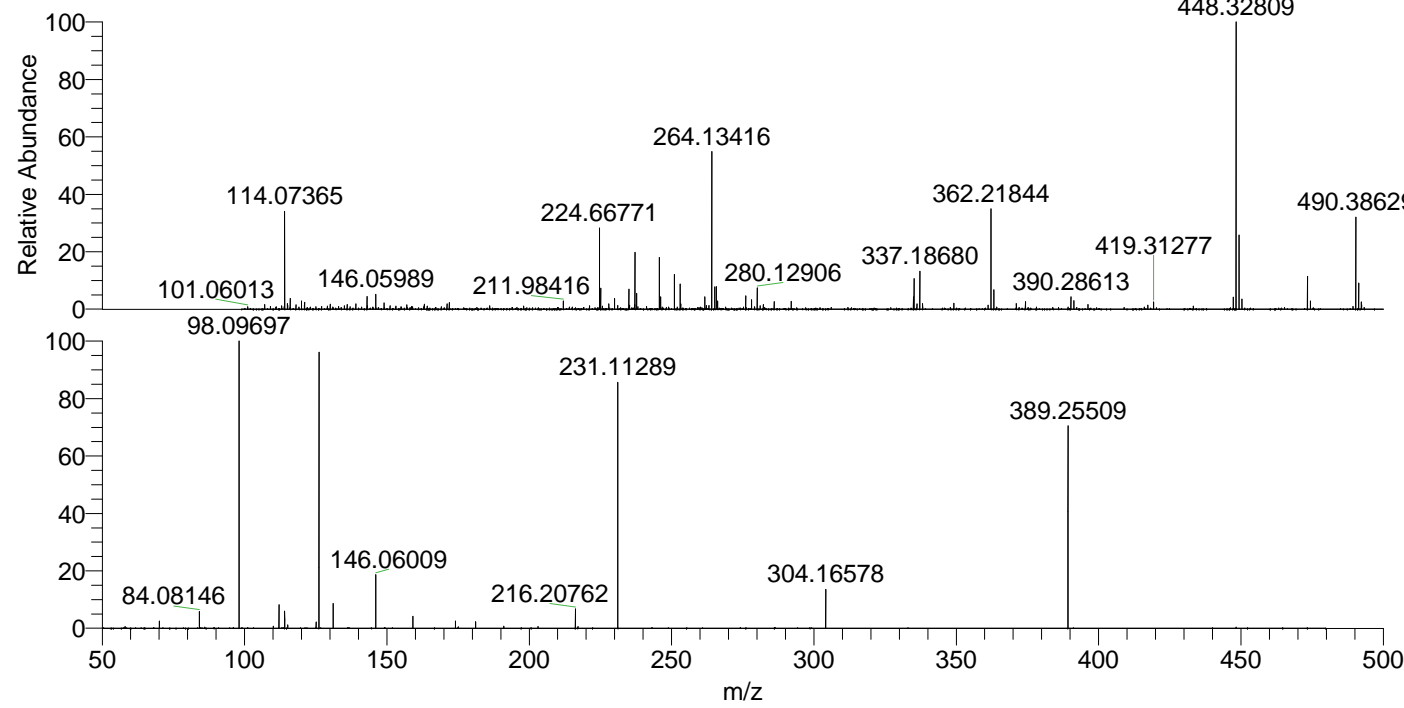
NL: 1.44E6
 Base Peak m/z= 224.66718-224.66942 F: FTMS + p ESI Full ms [100.00-1500.00] MS Aperta19

NL: 0
 Base Peak m/z= 652.31837-652.32489 F: FTMS + p ESI Full ms [100.00-1500.00] MS Aperta19

NL: 8.96E5
 Base Peak m/z= 50.00000-1500.00000 F: FTMS + p ESI d Full ms2 448.31@hcd35.00 [50.00-475.00] MS Aperta19

Aperta19#3491-3518 RT: 8.64-8.71 AV: F: FTMS + p ESI d Full ms2 448.31 ...
 m/z= 50.00000-1000.00000

m/z	Intensity	Relative
58.06603	3188.0	0.58
70.06593	13668.3	2.48
84.08146	31996.4	5.80
98.09697	551868.0	100.00
110.09698	3766.5	0.68
112.11251	46408.6	8.41
114.09177	32750.2	5.93
115.12353	6591.6	1.19
125.12026	12434.7	2.25
126.12806	526518.1	95.41
131.11818	48041.2	8.71
146.06009	102761.2	18.62
159.14981	22980.9	4.16
174.05551	13798.7	2.50
181.17052	12595.6	2.28
191.08185	4282.8	0.78
203.08168	3563.6	0.65
216.20762	36967.6	6.70
217.09743	3384.0	0.61
231.11289	486279.8	88.12
304.16578	74938.5	13.58
389.25509	389825.6	70.64



NL: 4.78E6
 Aperta19#3505 RT: 8.67 AV: 1 T: FTMS + p ESI Full lock ms [100.00-1500.00]

NL: 5.46E5
 Aperta19#3488-3518 RT: 8.64-8.71 AV: 6 F: FTMS + p ESI d Full ms2 448.31@hcd35.00 [50.00-475.00]