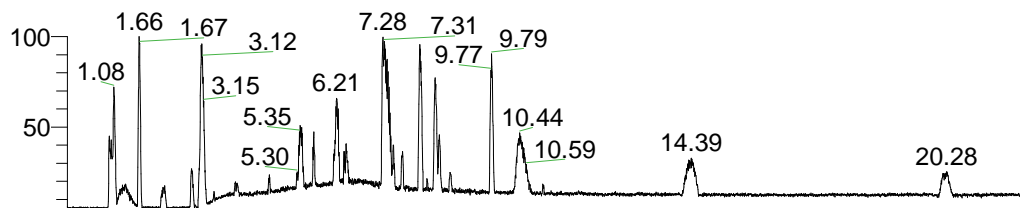


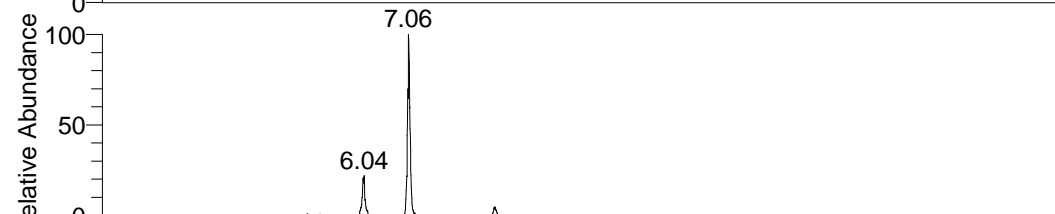
RT: 0.00 - 22.01



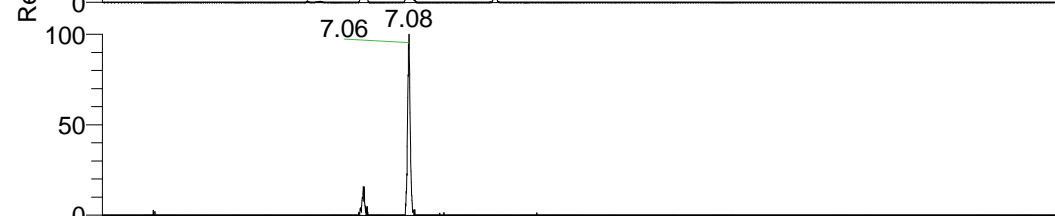
NL: 1.41E8
 Base Peak m/z=
 100.00000-1500.00000 F:
 FTMS + p ESI Full ms
 [100.00-1500.00] MS
 Aperta_HDX

Aperta_HDX#1165 RT: 7.06
 T: FTMS + p ESI Full ms [100.00-1500.00]
 m/z= 456.00000-457.00000

m/z	Intensity	Relative	Delta (ppm)	Composition
456.40012	3266305.0	100.00	-1.26	C ₂₄ H ₃₄ ² H ₉ O ₂ N ₆
			2.13	C ₂₄ H ₃₂ ² H ₁₀ O ₂ N ₆
			-4.65	C ₂₄ H ₃₆ ² H ₈ O ₂ N ₆
			-8.05	C ₂₄ H ₃₈ ² H ₇ O ₂ N ₆

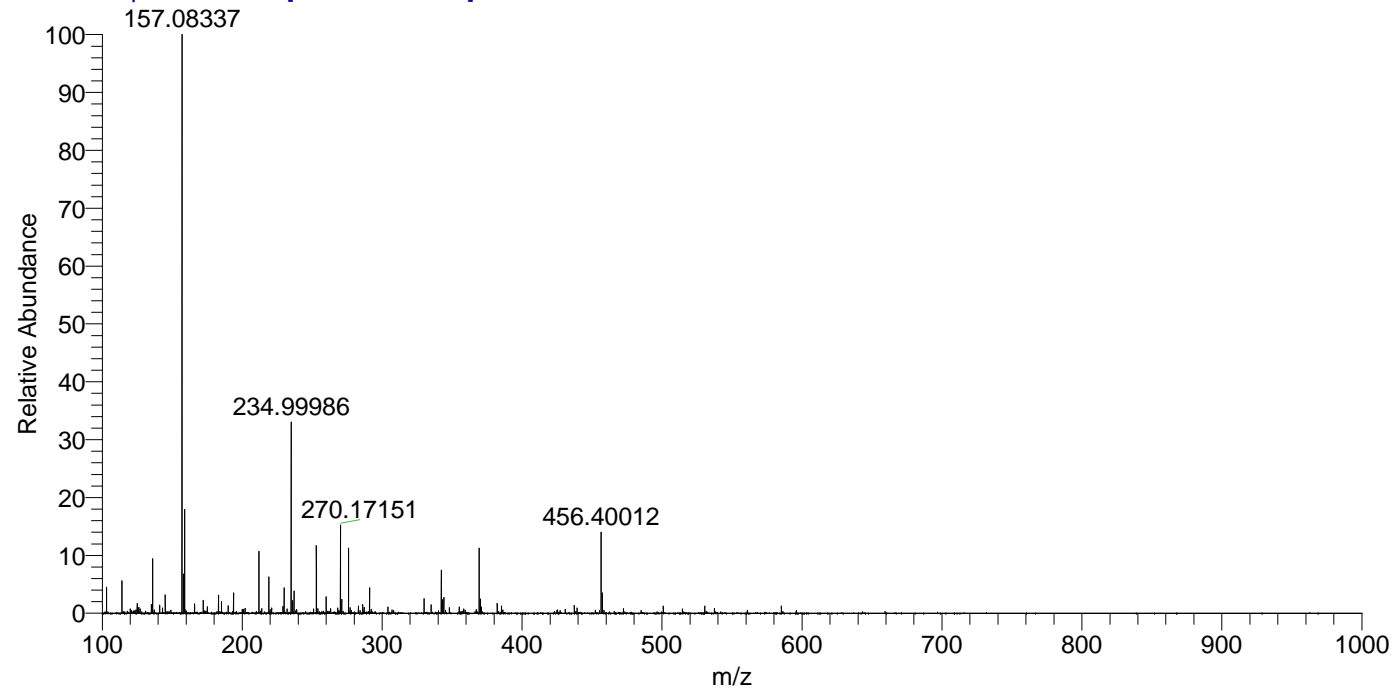


NL: 5.05E6
 Base Peak m/z=
 456.39896-456.40352 F:
 FTMS + p ESI Full ms
 [100.00-1500.00] MS
 Aperta_HDX



NL: 3.68E5
 Base Peak m/z=
 229.20652-229.20882 F:
 FTMS + p ESI Full ms
 [100.00-1500.00] MS
 Aperta_HDX

Aperta_HDX #1165 RT: 7.06 AV: 1 NL: 2.33E7
 T: FTMS + p ESI Full ms [100.00-1500.00]



Aperta_HDX #1165 RT: 7.06 AV: 1 NL: 3.26E6
 T: FTMS + p ESI Full ms [100.00-1500.00]

