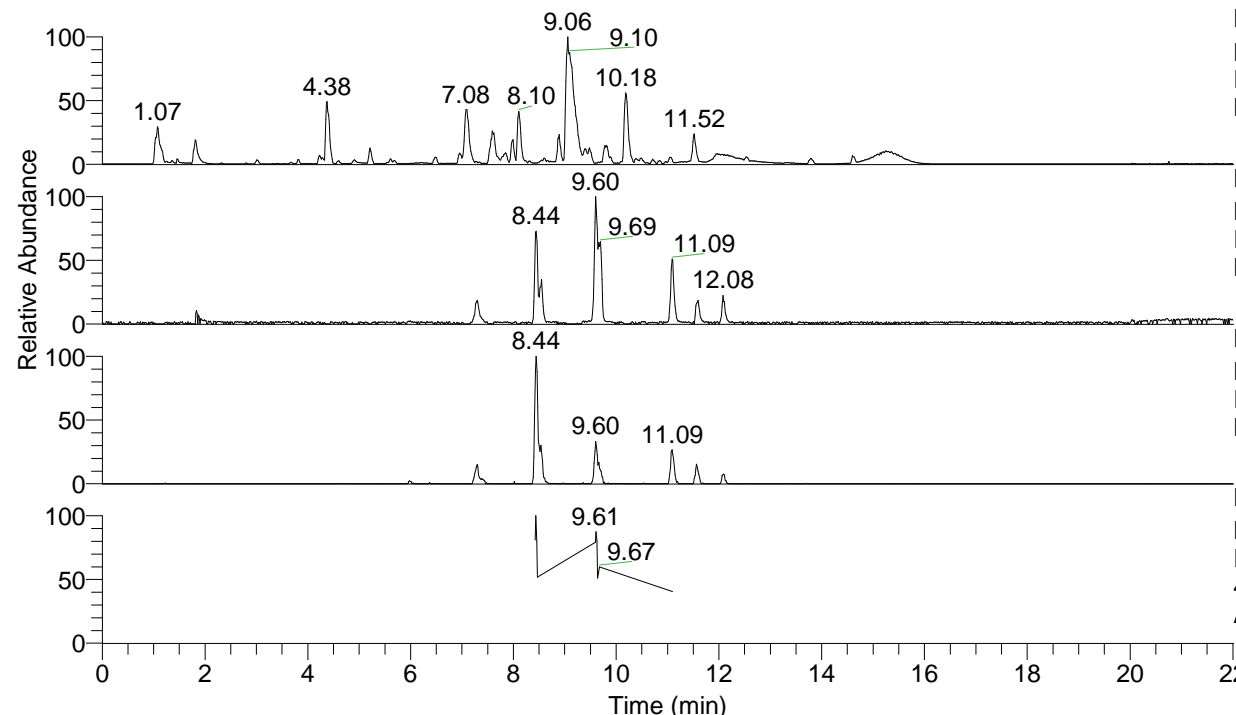


RT: 0.00 - 22.01



NL: 1.54E8
 Base Peak m/z= 100.00000-1500.00000 F:
 FTMS + p ESI Full ms [100.00-1500.00]
 MS Aperta19

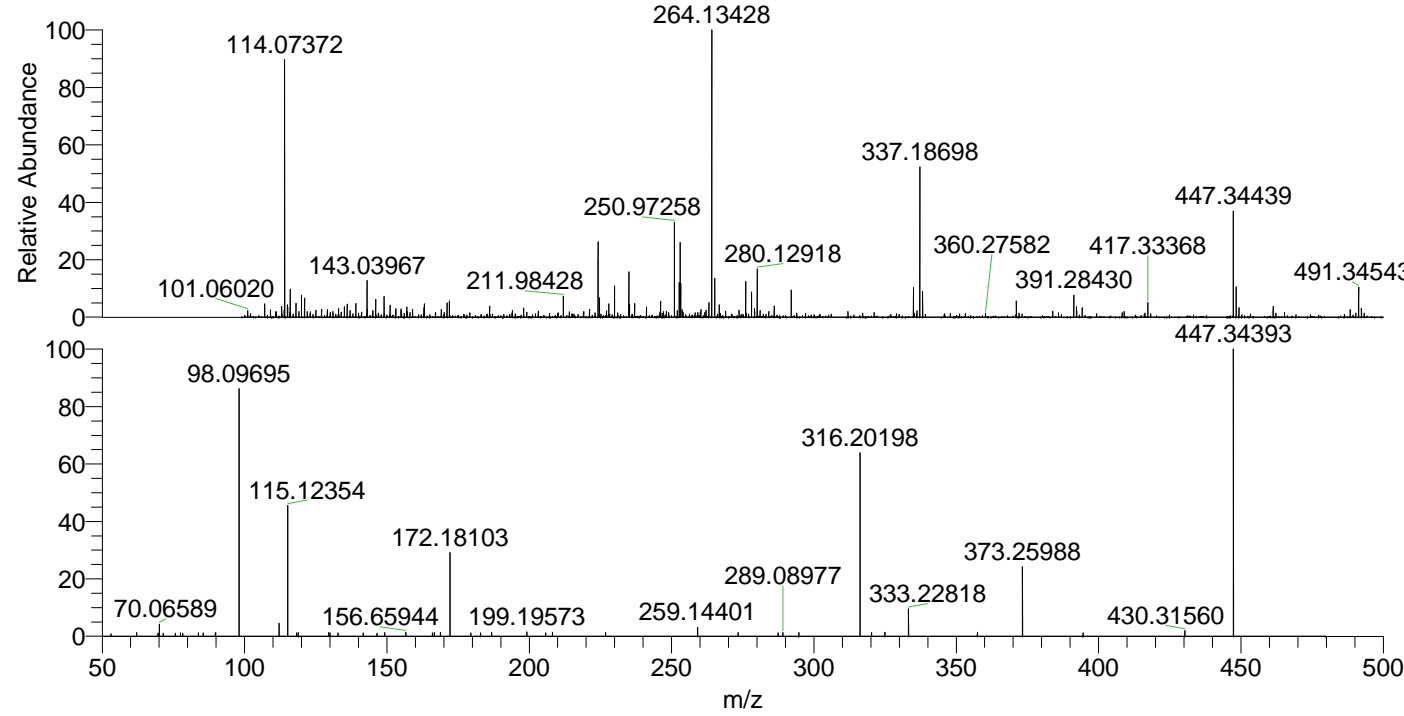
NL: 9.08E5
 Base Peak m/z= 447.34251-447.34699 F:
 FTMS + p ESI Full ms [100.00-1500.00]
 MS Aperta19

NL: 4.52E5
 Base Peak m/z= 224.17517-224.17741 F:
 FTMS + p ESI Full ms [100.00-1500.00]
 MS Aperta19

NL: 1.12E5
 Base Peak m/z= 50.00000-1500.00000 F:
 FTMS + p ESI d Full ms2
 447.34@hcd35.00 [50.00-475.00] MS
 Aperta19

Aperta19#3408-3426 RT: 8.43-8.47 AV:
 F: FTMS + p ESI d Full ms2 447.34 ...
 m/z= 50.00000-1000.00000

m/z	Intensity	Relative
53.04662	719.1	0.87
62.11428	1008.2	1.21
69.63998	912.2	1.10
69.68801	831.4	1.00
70.06589	3432.8	4.13
71.39616	877.4	1.06
75.67318	828.5	1.00
77.54200	945.1	1.14
78.28680	858.6	1.03
83.81003	941.6	1.13
85.46611	961.7	1.16
89.76107	906.8	1.09
89.88701	1043.2	1.25
98.08728	934.6	1.12
98.09121	1624.7	1.95
98.09695	71625.2	86.17
112.11288	3700.4	4.45
115.12354	38378.1	46.17
118.26494	930.8	1.12
118.92196	1045.2	1.26
129.53143	1061.2	1.28
130.01534	981.1	1.18
132.77899	950.3	1.14
141.65370	925.6	1.11
146.53223	854.9	1.03
149.18834	1093.6	1.32
156.65944	1150.3	1.38
166.02032	964.0	1.16
166.64819	1089.0	1.31
168.81663	1132.2	1.36
172.18103	24272.4	29.20
179.51417	998.6	1.20
182.90764	940.0	1.13
186.80122	1111.8	1.34
199.19573	1192.7	1.43
205.75057	981.9	1.18
208.15604	1122.1	1.35
226.83406	1034.7	1.24
259.14401	2518.5	3.03
273.38619	1033.7	1.24
287.41664	971.2	1.17
289.08977	1074.3	1.29
294.69226	1009.6	1.21
316.20198	52784.7	63.50
320.27096	1020.0	1.23
324.93241	1134.7	1.37
333.22818	8054.2	9.69
357.43396	1154.5	1.39
373.25988	19926.3	23.97
394.56658	962.0	1.16
430.31560	1674.9	2.01
447.34393	83120.7	100.00



NL: 1.71E6
 Aperta19#3415 RT: 8.44
 AV: 1 T: FTMS + p ESI
 Full lock ms
 [100.00-1500.00]

NL: 8.19E4
 Aperta19#3405-3427
 RT: 8.43-8.47 AV: 4 F:
 FTMS + p ESI d Full ms2
 447.34@hcd35.00
 [50.00-475.00]