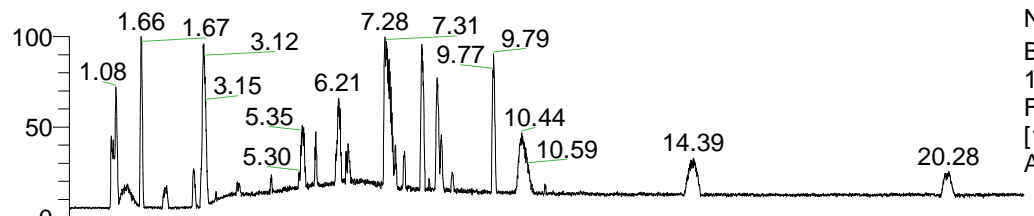


RT: 0.00 - 22.01



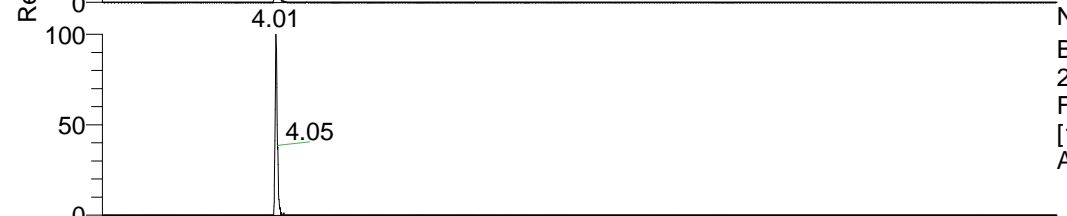
NL: 1.41E8
 Base Peak m/z=
 100.00000-1500.00000 F:
 FTMS + p ESI Full ms
 [100.00-1500.00] MS
 Aperta_HDX

Aperta_HDX#651 RT: 4.01
 T: FTMS + p ESI Full ms [100.00-1500.00]
 m/z= 444.00000-445.00000

m/z	Intensity	Relative	Delta (ppm)	Composition
444.38098	2603604.8	100.00	-1.23	C ₂₃ H ₃₈ ² H ₆ O ₃ N ₅
			2.26	C ₂₃ H ₃₆ ² H ₇ O ₃ N ₅
			-4.71	C ₂₃ H ₄₀ ² H ₅ O ₃ N ₅
			5.74	C ₂₃ H ₃₄ ² H ₈ O ₃ N ₅
			-8.20	C ₂₃ H ₄₂ ² H ₄ O ₃ N ₅
			9.22	C ₂₃ H ₃₂ ² H ₉ O ₃ N ₅



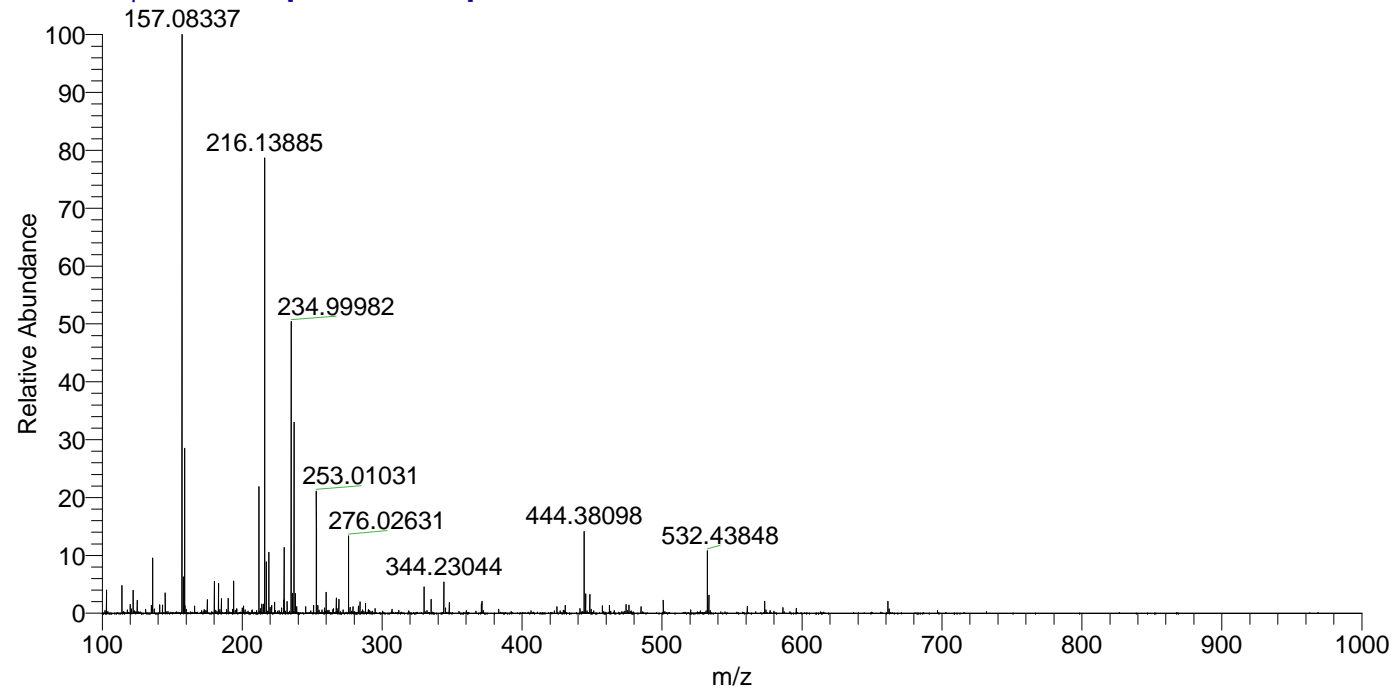
NL: 2.60E6
 Base Peak m/z=
 444.37986-444.38430 F:
 FTMS + p ESI Full ms
 [100.00-1500.00] MS
 Aperta_HDX



NL: 3.56E5
 Base Peak m/z=
 223.19697-223.19921 F:
 FTMS + p ESI Full ms
 [100.00-1500.00] MS
 Aperta_HDX

Aperta_HDX #651 RT: 4.01 AV: 1 NL: 1.73E7

T: FTMS + p ESI Full ms [100.00-1500.00]



Aperta_HDX #651 RT: 4.01 AV: 1 NL: 2.44E6

T: FTMS + p ESI Full ms [100.00-1500.00]

