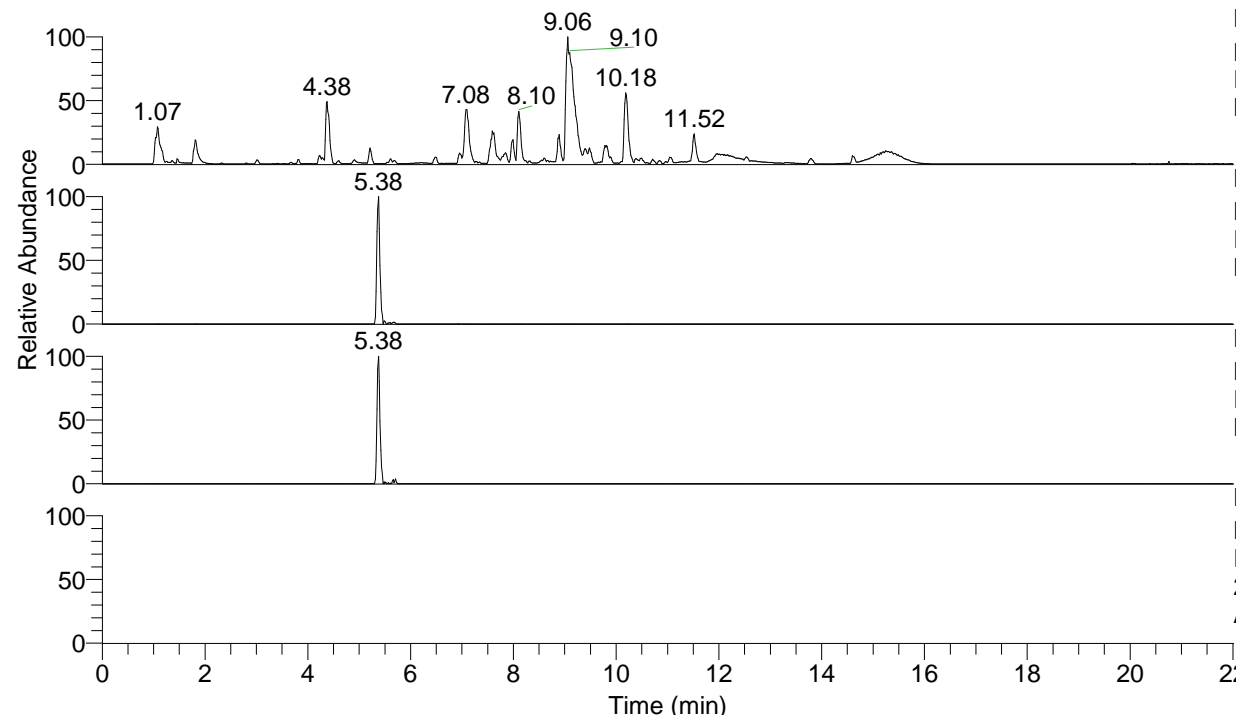


RT: 0.00 - 22.01



NL: 1.54E8
 Base Peak m/z= 100.00000-1500.00000 F:
 FTMS + p ESI Full ms [100.00-1500.00]
 MS Aperta19

NL: 9.51E5
 Base Peak m/z= 438.34223-438.34661 F:
 FTMS + p ESI Full ms [100.00-1500.00]
 MS Aperta19

NL: 3.04E5
 Base Peak m/z= 219.67502-219.67722 F:
 FTMS + p ESI Full ms [100.00-1500.00]
 MS Aperta19

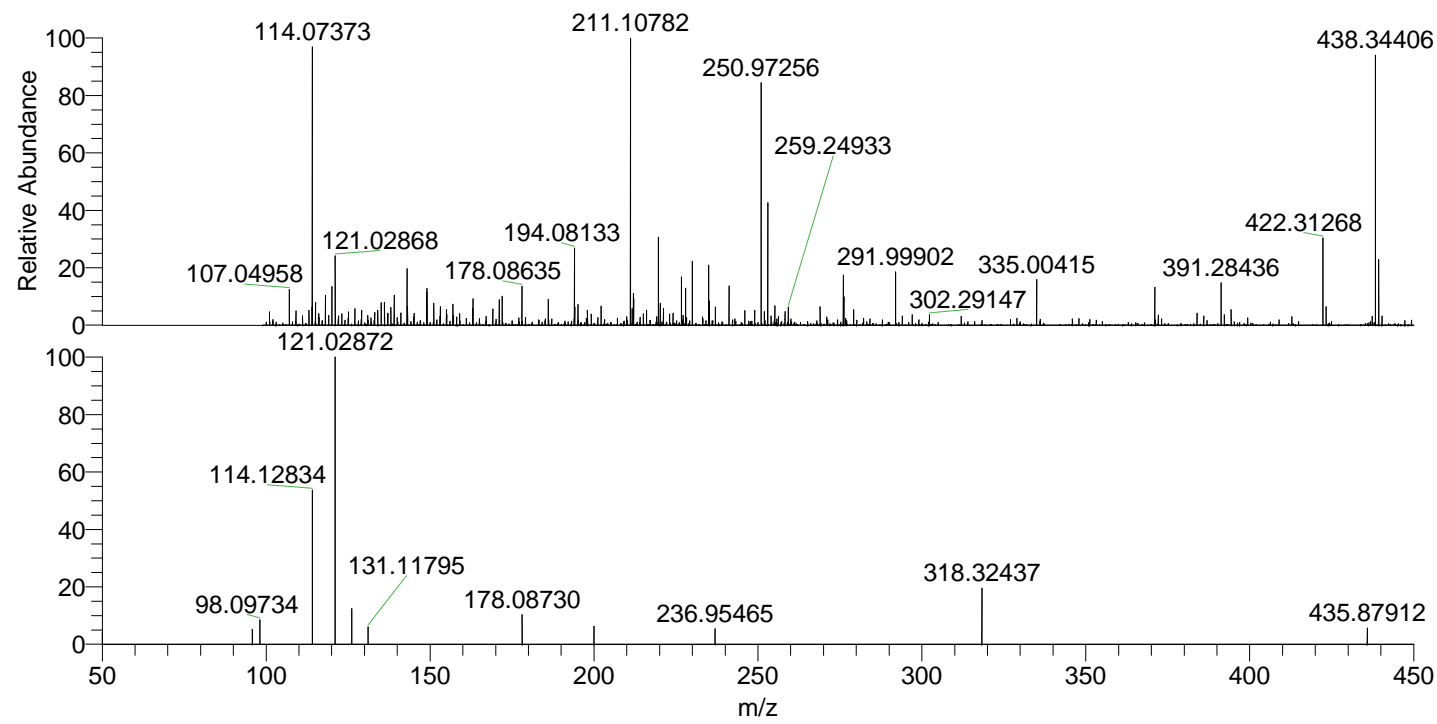
NL: 5.63E4
 Base Peak m/z= 50.00000-1500.00000 F:
 FTMS + p ESI d Full ms2
 219.68@hcd35.00 [50.00-465.00] MS
 Aperta19

Aperta19#2178 RT: 5.39

F: FTMS + p ESI d Full ms2 219.68 ...

m/z= 50.00000-1000.00000

m/z	Intensity	Relative
50.07033	2261.9	4.02
95.78953	2736.3	4.86
98.09734	4521.1	8.03
114.12834	28410.6	50.45
121.02872	56310.3	100.00
126.12799	6671.9	11.85
131.11795	3234.5	5.74
178.08730	5714.1	10.15
199.97636	3340.6	5.93
236.95465	2877.0	5.11
318.32437	10628.8	18.88
435.87912	2973.8	5.28



NL: 9.81E5
 Aperta19#2173 RT:
 5.38 AV: 1 T: FTMS +
 p ESI Full lock ms
 [100.00-1500.00]

NL: 5.29E4
 Aperta19#2141 RT:
 5.39 AV: 1 F: FTMS +
 p ESI d Full ms2
 219.68@hcd35.00
 [50.00-465.00]