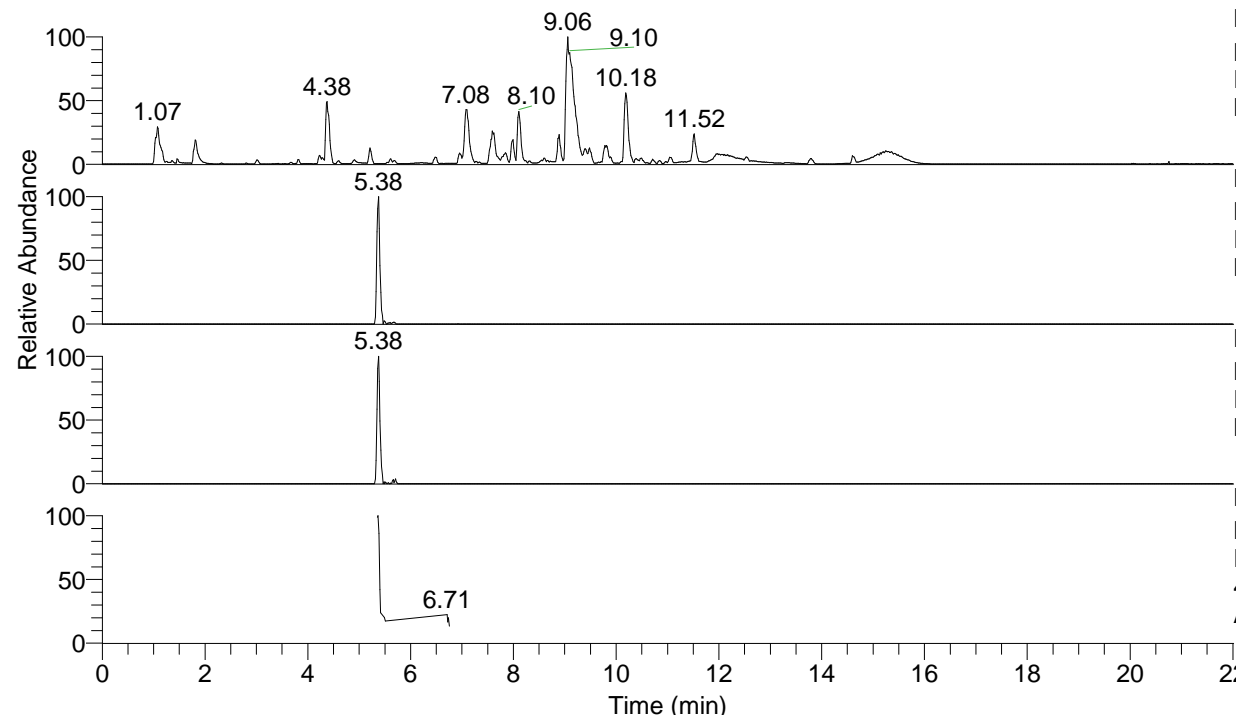


RT: 0.00 - 22.01



NL: 1.54E8  
 Base Peak m/z= 100.00000-1500.00000 F:  
 FTMS + p ESI Full ms [100.00-1500.00]  
 MS Aperta19

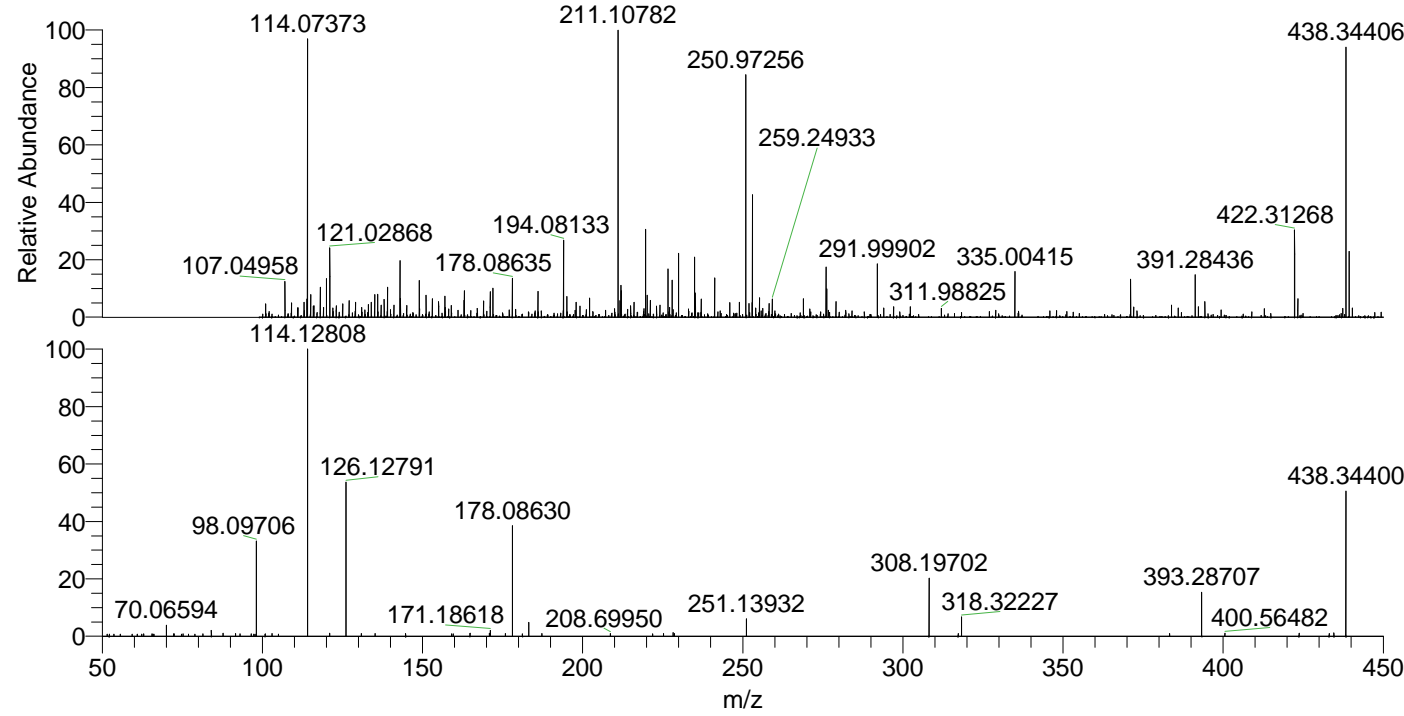
NL: 9.51E5  
 Base Peak m/z= 438.34223-438.34661 F:  
 FTMS + p ESI Full ms [100.00-1500.00]  
 MS Aperta19

NL: 3.04E5  
 Base Peak m/z= 219.67502-219.67722 F:  
 FTMS + p ESI Full ms [100.00-1500.00]  
 MS Aperta19

NL: 1.45E5  
 Base Peak m/z= 50.00000-1500.00000 F:  
 FTMS + p ESI d Full ms2  
 438.31@hcd35.00 [50.00-465.00] MS  
 Aperta19

Aperta19#2165-2183 RT: 5.36-5.40 AV:  
 F: FTMS + p ESI d Full ms2 438.31 ...  
 m/z= 50.00000-1000.00000

m/z	Intensity	Relative
55.67018	832.6	0.76
59.30699	813.6	0.74
60.97400	805.5	0.73
62.92477	851.1	0.77
65.52322	882.0	0.80
65.80917	827.6	0.75
70.06594	4130.4	3.75
72.38180	880.2	0.80
72.47890	910.8	0.83
75.27628	954.8	0.87
78.90704	831.0	0.75
81.43741	944.9	0.86
84.08115	2292.3	2.08
87.71711	1147.8	1.04
91.60213	974.0	0.88
93.06517	993.1	0.90
96.48438	858.4	0.78
97.31041	832.3	0.76
97.68307	838.7	0.76
98.09706	36028.2	32.72
100.87578	929.6	0.84
103.00245	1002.9	0.91
105.05040	811.3	0.74
114.12808	110118.3	100.00
121.02919	1203.3	1.09
126.12791	59139.7	53.71
130.87717	969.6	0.88
135.20172	1030.8	0.94
144.74838	1001.1	0.91
159.12417	854.0	0.78
159.62245	906.9	0.82
164.84314	1096.6	1.00
170.89516	1140.6	1.04
171.18618	2184.6	1.98
175.91268	1045.8	0.95
178.08630	42829.6	38.89
181.22483	981.2	0.89
183.18605	5210.2	4.73
187.26197	1019.3	0.93
208.69950	1101.7	1.00
221.87062	943.6	0.86
225.24466	1003.1	0.91
228.24456	1398.7	1.27
228.67325	1036.7	0.94
251.13932	6737.1	6.12
308.19702	22019.2	20.00
317.29178	1071.7	0.97
318.32227	7313.6	6.64
383.28888	1082.6	0.98
393.28707	16722.2	15.19
400.56482	1142.2	1.04
423.74184	1099.9	1.00
433.13889	1081.5	0.98
434.58961	1351.1	1.23
438.34400	56750.3	51.54



NL: 9.81E5  
 Aperta19#2173 RT: 5.38  
 AV: 1 T: FTMS + p ESI  
 Full lock ms  
 [100.00-1500.00]

NL: 1.08E5  
 Aperta19#2157-2186  
 RT: 5.36-5.40 AV: 4 F:  
 FTMS + p ESI d Full ms2  
 438.31@hcd35.00  
 [50.00-465.00]