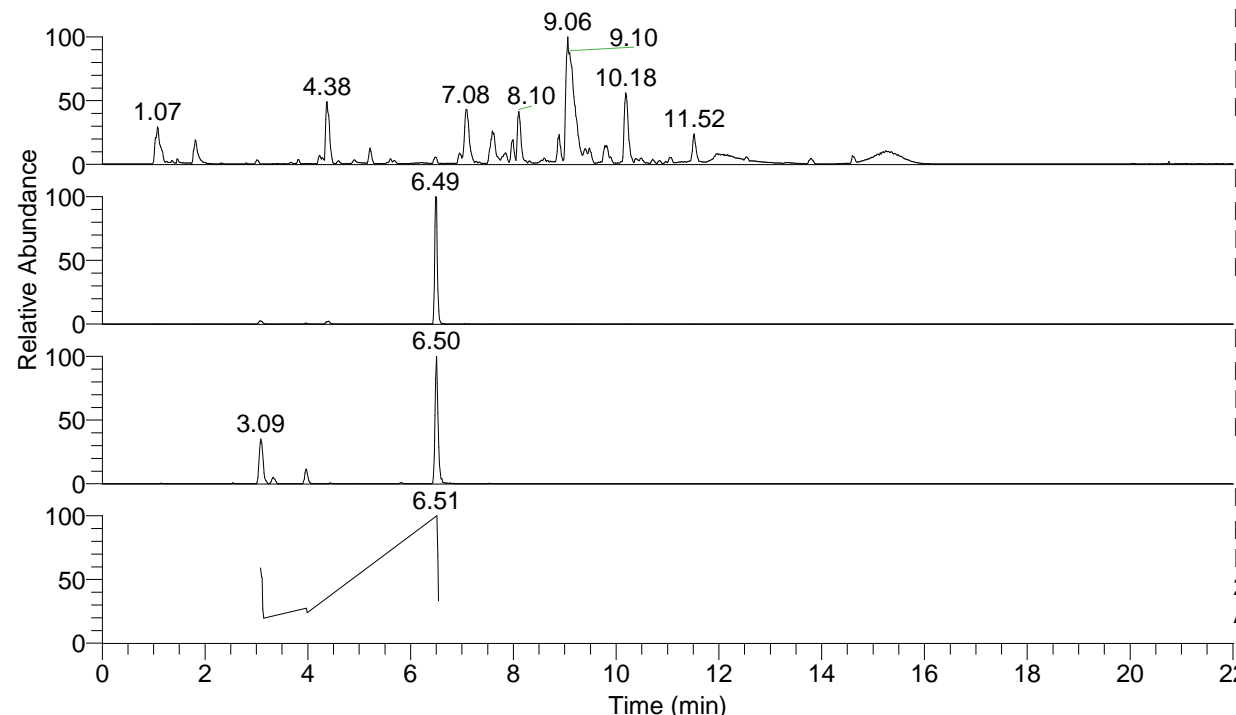


RT: 0.00 - 22.01



NL: 1.54E8  
 Base Peak m/z= 100.00000-1500.00000 F:  
 FTMS + p ESI Full ms [100.00-1500.00]  
 MS Aperta19

NL: 8.53E6  
 Base Peak m/z= 437.35821-437.36259 F:  
 FTMS + p ESI Full ms [100.00-1500.00]  
 MS Aperta19

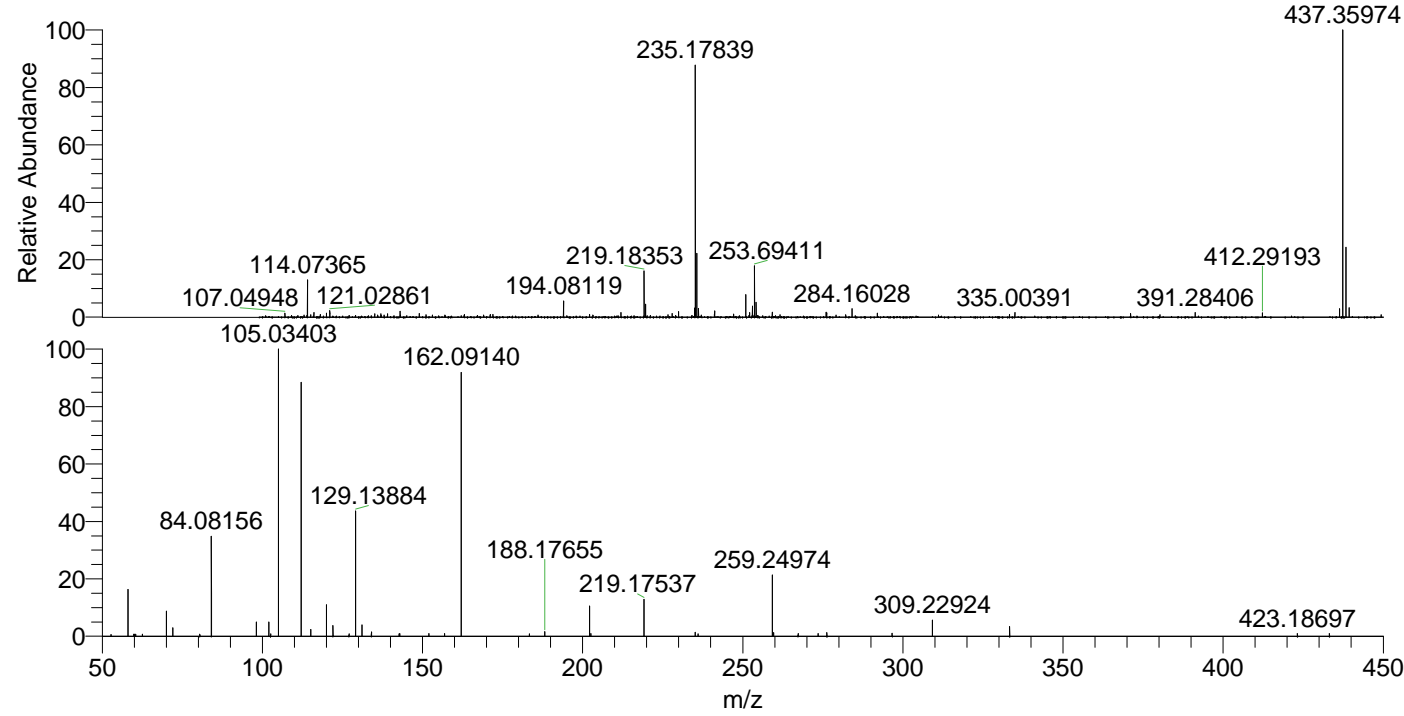
NL: 1.70E6  
 Base Peak m/z= 219.18301-219.18521 F:  
 FTMS + p ESI Full ms [100.00-1500.00]  
 MS Aperta19

NL: 1.72E5  
 Base Peak m/z= 50.00000-1500.00000 F:  
 FTMS + p ESI d Full ms2  
 219.18@hcd35.00 [50.00-465.00] MS  
 Aperta19

Aperta19#2628-2633 RT: 6.51-6.53 AV:

F: FTMS + p ESI d Full ms2 219.18 ...  
 m/z= 50.00000-1000.00000

m/z	Intensity	Relative
52.78344	1068.5	0.80
58.06606	18889.8	14.17
59.84548	1209.2	0.91
60.41208	1175.5	0.88
62.49743	1173.4	0.88
70.06604	11187.4	8.39
72.08175	4675.0	3.51
80.48348	1187.5	0.89
84.08158	45187.1	33.89
98.09718	7794.7	5.85
102.02066	5304.8	3.98
105.03403	133326.3	100.00
112.11253	113166.1	84.88
115.12368	3807.2	2.86
120.03126	9501.0	7.13
122.06072	4311.6	3.23
127.06412	1261.1	0.95
129.13887	55903.6	41.93
131.11834	6289.9	4.72
134.06068	2459.6	1.84
142.73091	1302.4	0.98
142.88208	1478.3	1.11
156.87297	1416.6	1.06
162.09141	116133.3	87.10
183.40184	1386.2	1.04
188.17655	2496.0	1.87
202.19214	13814.4	10.36
202.59880	1589.5	1.19
219.17557	14978.9	11.23
235.14396	2103.7	1.58
236.02979	1346.6	1.01
259.24966	26177.8	19.63
259.64246	1959.4	1.47
276.27533	1978.8	1.48
296.65652	1736.1	1.30
309.22924	9041.5	6.78
333.33364	5430.9	4.07
423.18697	1473.2	1.10
433.18937	1449.6	1.09



NL: 8.53E6  
 Aperta19#2617 RT: 6.49  
 AV: 1 T: FTMS + p ESI  
 Full lock ms  
 [100.00-1500.00]

NL: 1.04E5  
 Aperta19#2613-2641  
 RT: 6.51-6.54 AV: 3 F:  
 FTMS + p ESI d Full ms2  
 219.18@hcd35.00  
 [50.00-465.00]