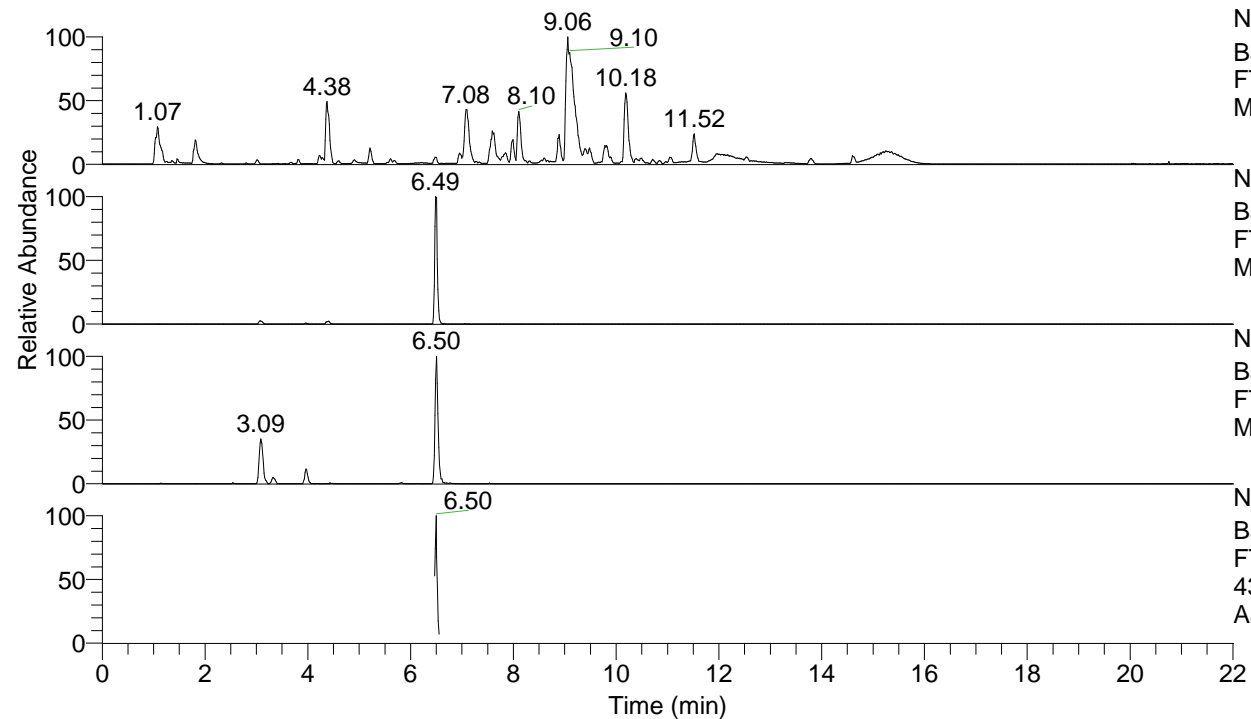


RT: 0.00 - 22.01



NL: 1.54E8
 Base Peak m/z= 100.00000-1500.00000 F:
 FTMS + p ESI Full ms [100.00-1500.00]
 MS Aperta19

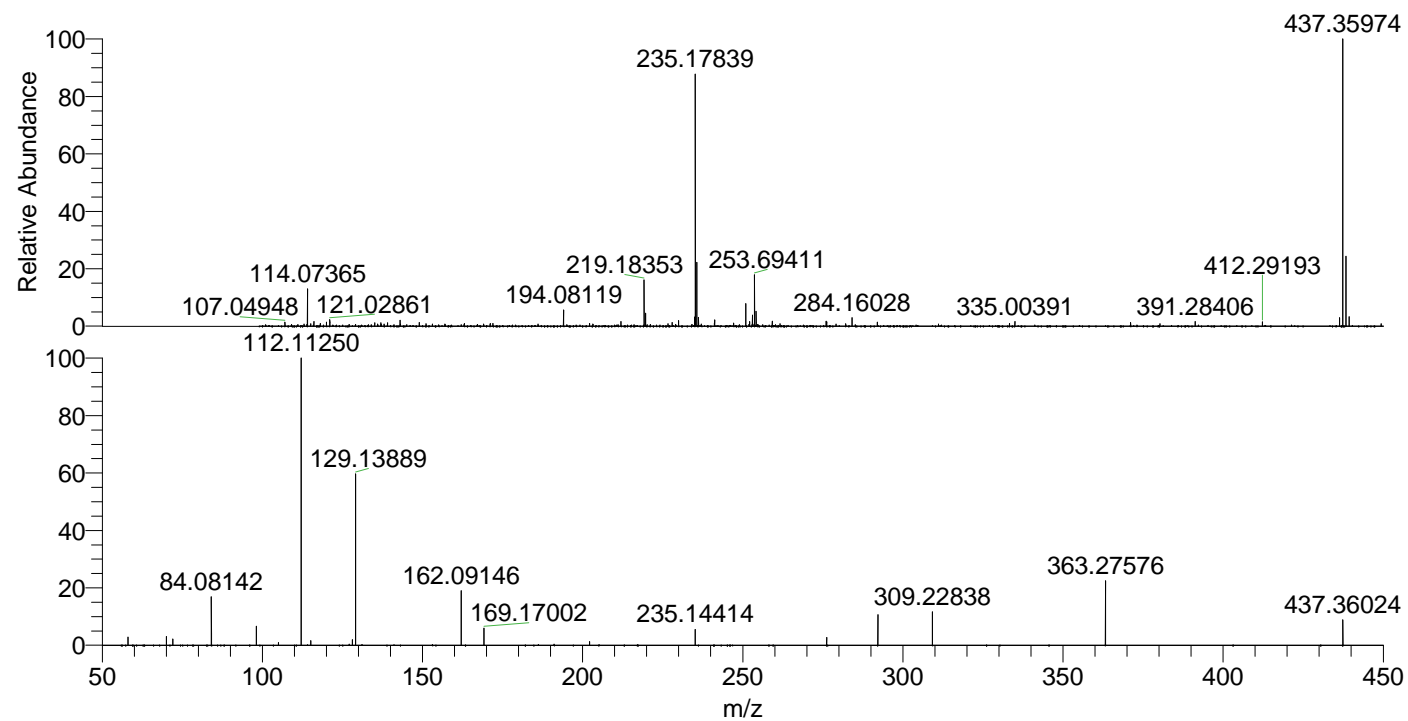
NL: 8.53E6
 Base Peak m/z= 437.35821-437.36259 F:
 FTMS + p ESI Full ms [100.00-1500.00]
 MS Aperta19

NL: 1.70E6
 Base Peak m/z= 219.18301-219.18521 F:
 FTMS + p ESI Full ms [100.00-1500.00]
 MS Aperta19

NL: 2.09E6
 Base Peak m/z= 50.00000-1500.00000 F:
 FTMS + p ESI d Full ms2
 437.36@hcd35.00 [50.00-465.00] MS
 Aperta19

Aaperta19#2610-2630 RT: 6.47-6.52 AV: 5
 F: FTMS + p ESI d Full ms2 437.36@h ...
 m/z= 50.00000-1000.00000

m/z	Intensity	Relative
58.06606	39502.1	2.90
70.06594	41538.8	3.05
72.08149	30247.0	2.22
84.08142	231631.0	17.03
98.09701	90870.6	6.68
105.03412	13117.0	0.96
112.11250	1360090.0	100.00
115.12332	21779.9	1.60
128.10716	26630.5	1.96
129.13889	827064.3	60.81
162.09146	258654.1	19.02
169.17002	83295.6	6.12
202.19119	17479.4	1.29
235.14414	75521.9	5.55
276.20769	37713.5	2.77
292.20211	145749.2	10.72
309.22838	160806.6	11.82
363.27576	308574.6	22.69
437.36024	124974.9	9.19



NL: 8.53E6
 Aaperta19#2617 RT: 6.49
 AV: 1 T: FTMS + p ESI
 Full lock ms
 [100.00-1500.00]

NL: 1.36E6
 Aaperta19#2606-2635
 RT: 6.47-6.52 AV: 5 F:
 FTMS + p ESI d Full ms2
 437.36@hcd35.00
 [50.00-465.00]