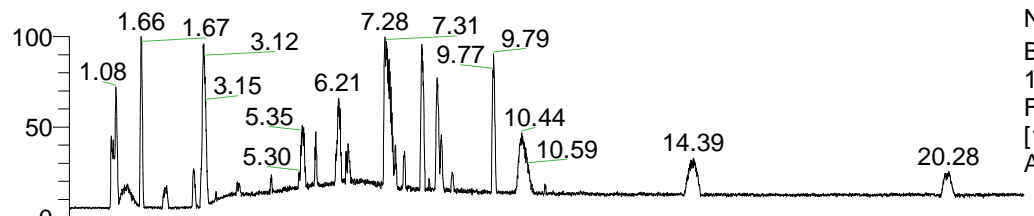


RT: 0.00 - 22.01



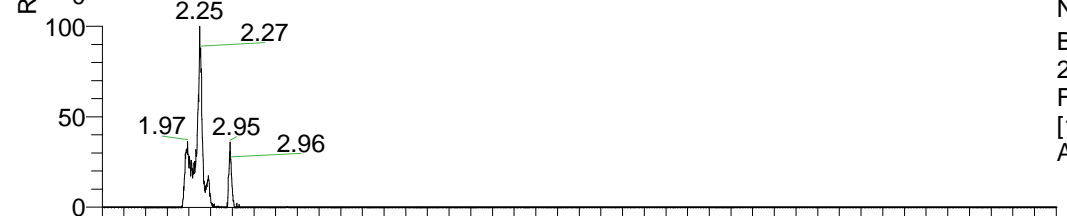
NL: 1.41E8
 Base Peak m/z=
 100.00000-1500.00000 F:
 FTMS + p ESI Full ms
 [100.00-1500.00] MS
 Aperta_HDX

Aperta_HDX#364 RT: 2.26
 T: FTMS + p ESI Full ms [100.00-1500.00]
 m/z = 446.00000-447.00000

m/z	Intensity	Relative	Delta (ppm)	Composition
446.41571	1937711.3	100.00	-1.41	C ₂₃ H ₃₆ ² H ₉ O ₂ N ₆
			2.05	C ₂₃ H ₃₄ ² H ₁₀ O ₂ N ₆
			-4.88	C ₂₃ H ₃₈ ² H ₈ O ₂ N ₆
			-8.35	C ₂₃ H ₄₀ ² H ₇ O ₂ N ₆

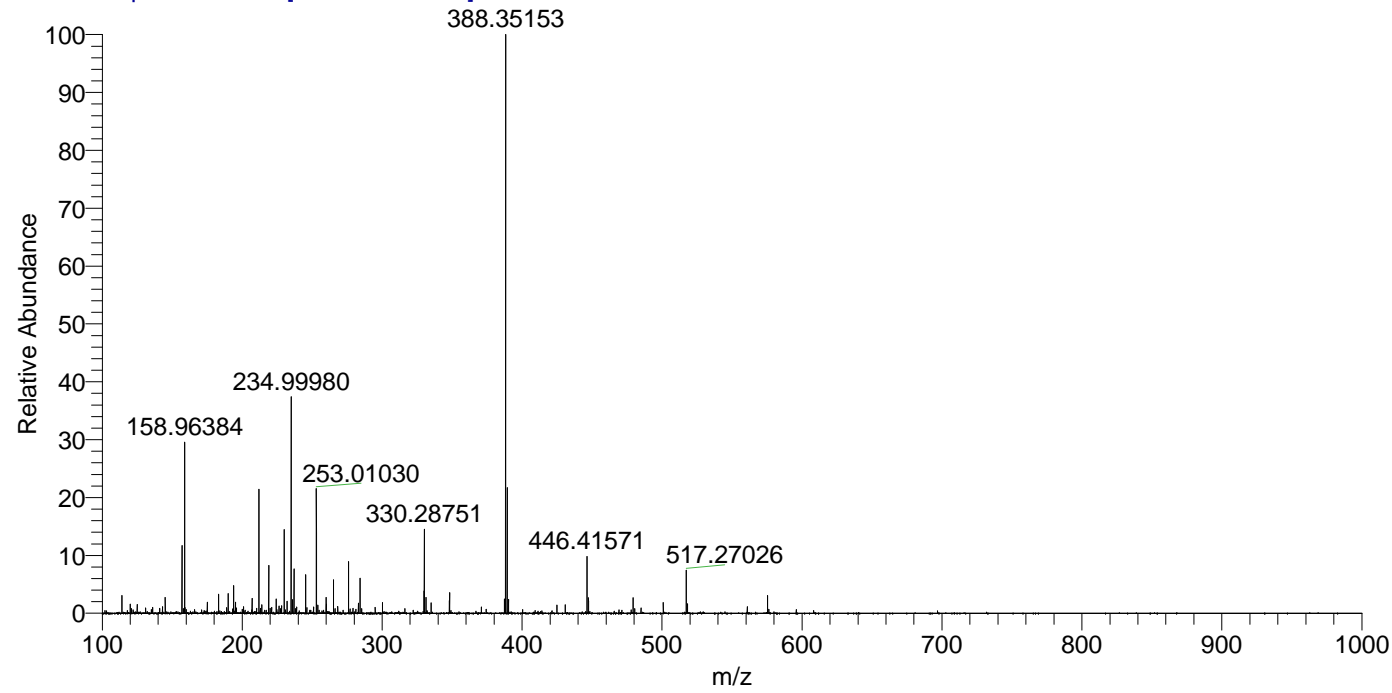


NL: 2.07E6
 Base Peak m/z=
 446.41466-446.41912 F:
 FTMS + p ESI Full ms
 [100.00-1500.00] MS
 Aperta_HDX



NL: 5.65E5
 Base Peak m/z=
 224.21438-224.21662 F:
 FTMS + p ESI Full ms
 [100.00-1500.00] MS
 Aperta_HDX

Aperta_HDX #364 RT: 2.26 AV: 1 NL: 1.95E7
 T: FTMS + p ESI Full ms [100.00-1500.00]



Aperta_HDX #364 RT: 2.26 AV: 1 NL: 1.91E6
 T: FTMS + p ESI Full ms [100.00-1500.00]

