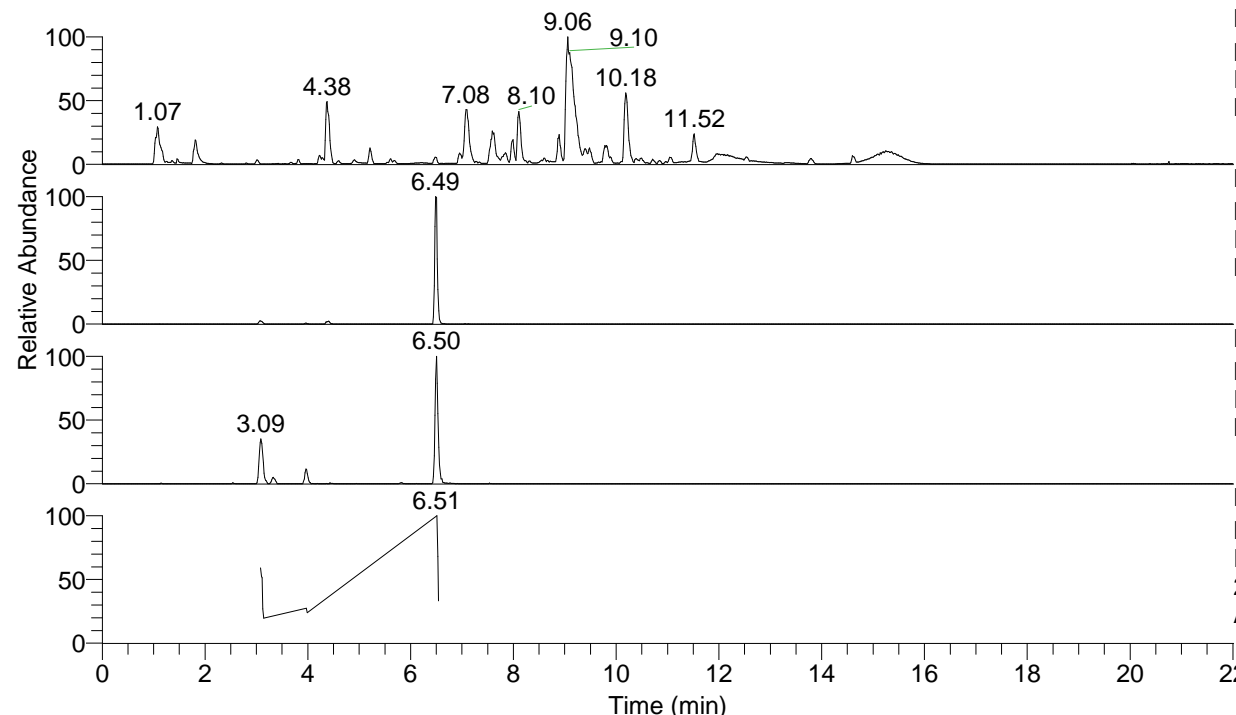


RT: 0.00 - 22.01



NL: 1.54E8
 Base Peak m/z= 100.00000-1500.00000 F:
 FTMS + p ESI Full ms [100.00-1500.00]
 MS Aperta19

NL: 8.53E6
 Base Peak m/z= 437.35821-437.36259 F:
 FTMS + p ESI Full ms [100.00-1500.00]
 MS Aperta19

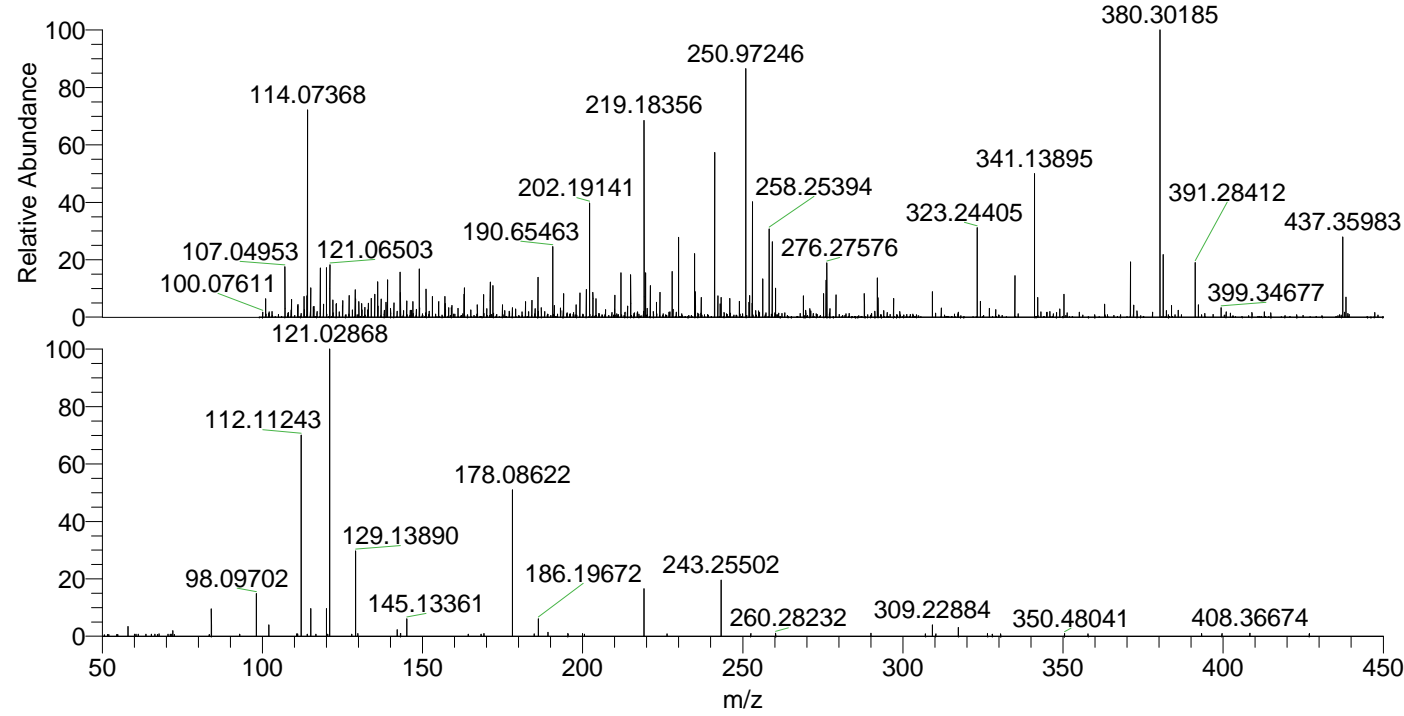
NL: 1.70E6
 Base Peak m/z= 219.18301-219.18521 F:
 FTMS + p ESI Full ms [100.00-1500.00]
 MS Aperta19

NL: 1.72E5
 Base Peak m/z= 50.00000-1500.00000 F:
 FTMS + p ESI d Full ms2
 219.18@hcd35.00 [50.00-465.00] MS
 Aperta19

Aperta19#1253-1276 RT: 3.08-3.14 AV:

F: FTMS + p ESI d Full ms2 219.18 ...
 m/z= 50.00000-1000.00000

m/z	Intensity	Relative
58.06592	2360.3	3.46
61.20406	484.6	0.71
63.68594	502.3	0.74
66.39763	484.9	0.71
67.74655	541.0	0.79
70.58062	485.1	0.71
72.08145	1291.4	1.90
84.08152	6507.4	9.55
92.90781	522.9	0.77
98.09702	10226.5	15.01
102.02064	2751.0	4.04
110.68612	551.1	0.81
111.00296	563.2	0.83
112.11243	48319.7	70.91
114.02433	488.3	0.72
115.12330	6637.8	9.74
120.03093	6595.0	9.68
121.02038	1155.2	1.70
121.02868	68140.4	100.00
127.88374	530.0	0.78
129.13890	20208.9	29.66
129.77105	647.7	0.95
142.12259	1585.8	2.33
143.15452	649.3	0.95
145.13361	4140.5	6.08
164.31298	545.0	0.80
168.27752	531.8	0.78
169.17087	679.9	1.00
178.06866	550.5	0.81
178.08622	35889.9	52.67
184.90422	607.2	0.89
186.19672	4266.8	6.26
189.20850	946.0	1.39
195.42601	619.8	0.91
199.95092	664.0	0.97
200.55954	521.7	0.77
219.17376	11495.9	16.87
226.34849	571.1	0.84
243.25502	13406.0	19.67
252.50583	626.1	0.92
260.28232	756.0	1.11
290.03885	723.3	1.06
307.04732	577.3	0.85
309.22884	2748.7	4.03
310.27765	581.4	0.85
317.33838	2069.3	3.04
326.43149	612.7	0.90
327.94856	531.4	0.78
330.54432	595.4	0.87
350.48041	678.3	1.00
357.81684	599.3	0.88
393.27935	677.5	0.99
399.63940	642.2	0.94
408.36674	700.4	1.03
426.91964	618.8	0.91



NL: 8.00E5
 Aperta19#1249 RT: 3.07
 AV: 1 T: FTMS + p ESI
 Full lock ms
 [100.00-1500.00]

NL: 6.80E4
 Aperta19#1241-1276
 RT: 3.08-3.14 AV: 5 F:
 FTMS + p ESI d Full ms2
 219.18@hcd35.00
 [50.00-465.00]