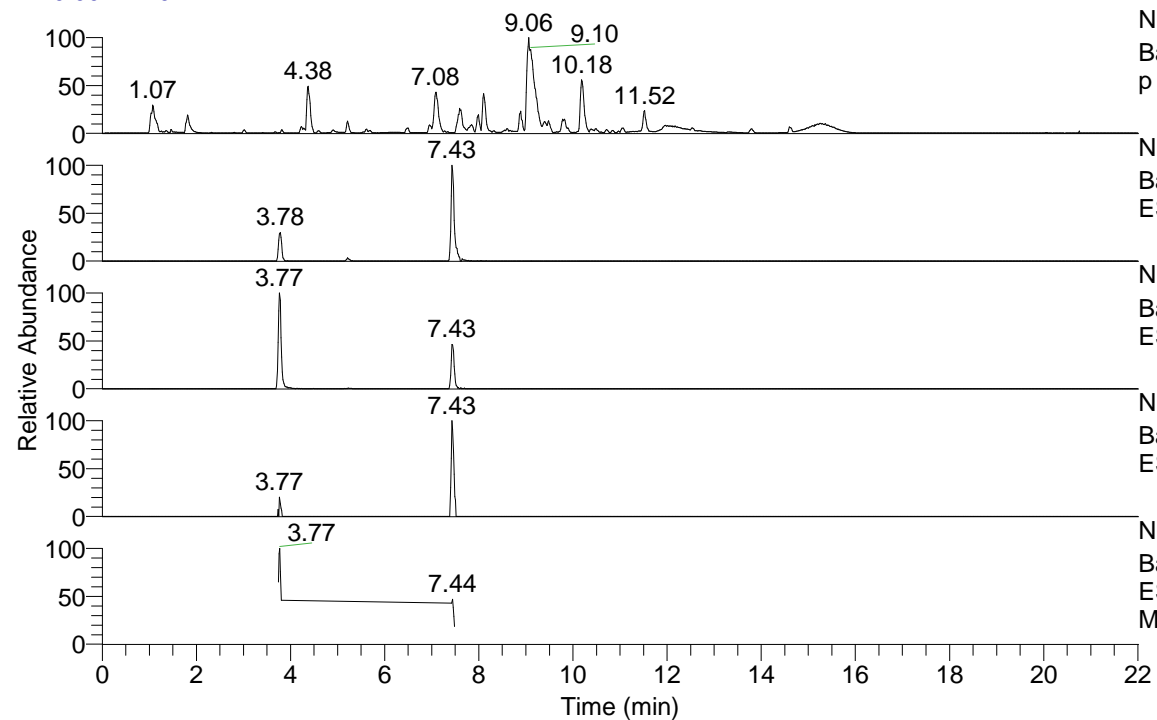


RT: 0.00 - 22.01



NL: 1.54E8
 Base Peak m/z= 100.00000-1500.00000 F: FTMS + p ESI Full ms [100.00-1500.00] MS Aperta19

NL: 8.11E5
 Base Peak m/z= 436.36297-436.36733 F: FTMS + p ESI Full ms [100.00-1500.00] MS Aperta19

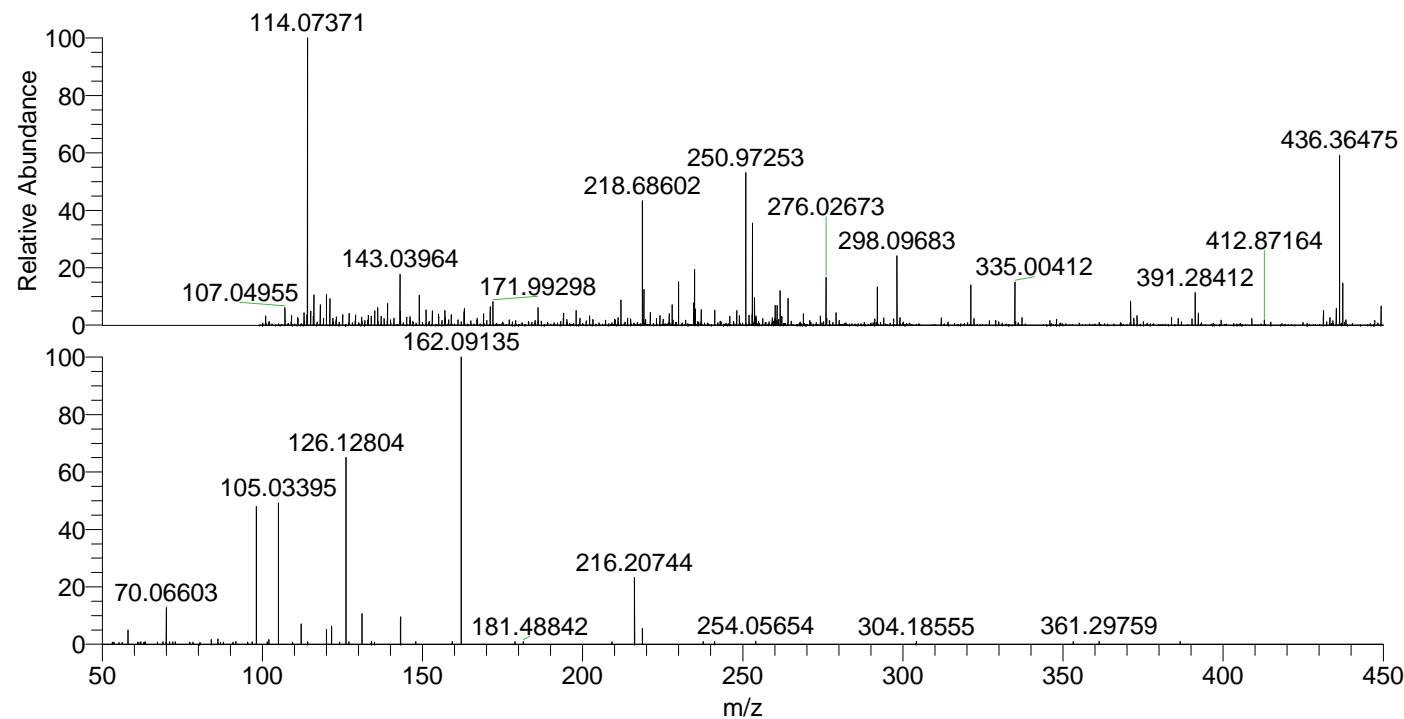
NL: 1.30E6
 Base Peak m/z= 218.68540-218.68758 F: FTMS + p ESI Full ms [100.00-1500.00] MS Aperta19

NL: 3.23E4
 Base Peak m/z= 550.35526-550.36076 F: FTMS + p ESI Full ms [100.00-1500.00] MS Aperta19

NL: 1.91E5
 Base Peak m/z= 50.00000-1500.00000 F: FTMS + p ESI d Full ms2 218.69@hcd35.00 [50.00-465.00] MS Aperta19

Aperta19#2999-3024 RT: 7.42-7.49 AV: ...
 F: FTMS + p ESI d Full ms2 218.69 ...
 m/z= 50.00000-1000.00000

m/z	Intensity	Relative
53.18780	504.6	0.78
53.67516	474.3	0.74
58.02516	471.6	0.73
58.06608	3212.8	4.98
61.02405	464.8	0.72
62.08112	543.9	0.84
63.20317	462.0	0.72
63.42489	524.2	0.81
68.91844	573.2	0.89
69.94856	467.3	0.72
70.06603	8214.4	12.74
71.05034	566.8	0.88
72.08185	513.6	0.80
72.88099	522.5	0.81
77.33249	493.7	0.77
78.33816	459.8	0.71
84.08117	1102.7	1.71
86.09733	1182.7	1.83
86.89810	490.7	0.76
87.85822	491.4	0.76
90.85772	500.8	0.78
91.75133	616.1	0.96
95.44615	477.9	0.74
96.87057	545.9	0.85
98.09694	31006.7	48.08
101.50076	540.2	0.84
102.02060	1098.9	1.70
105.03395	32530.3	50.44
109.43097	483.7	0.75
112.11263	4722.7	7.32
114.16639	535.3	0.83
120.03124	3400.3	5.27
121.63357	4028.3	6.25
124.10809	491.6	0.76
126.12804	42248.7	65.51
127.00853	549.4	0.85
131.11850	6866.7	10.65
134.06088	679.0	1.05
135.05105	497.2	0.77
143.15461	6241.2	9.68
147.90973	613.6	0.95
159.28477	610.9	0.95
162.09135	64490.4	100.00
178.89792	549.1	0.85
181.48842	595.1	0.92
209.16630	527.5	0.82
216.20744	15118.4	23.44
218.68675	3551.0	5.51
237.65928	616.5	0.96
241.20412	607.9	0.94
254.05654	706.6	1.10
304.18555	622.0	0.96
353.20989	642.9	1.00
361.29759	664.8	1.03
386.58374	626.2	0.97



NL: 1.34E6
 Aperta19#3001 RT: 7.43
 AV: 1 T: FTMS + p ESI
 Full lock ms
 [100.00-1500.00]

NL: 6.43E4
 Aperta19#2992-3026
 RT: 7.42-7.49 AV: 5 F:
 FTMS + p ESI d Full ms2
 218.69@hcd35.00
 [50.00-465.00]