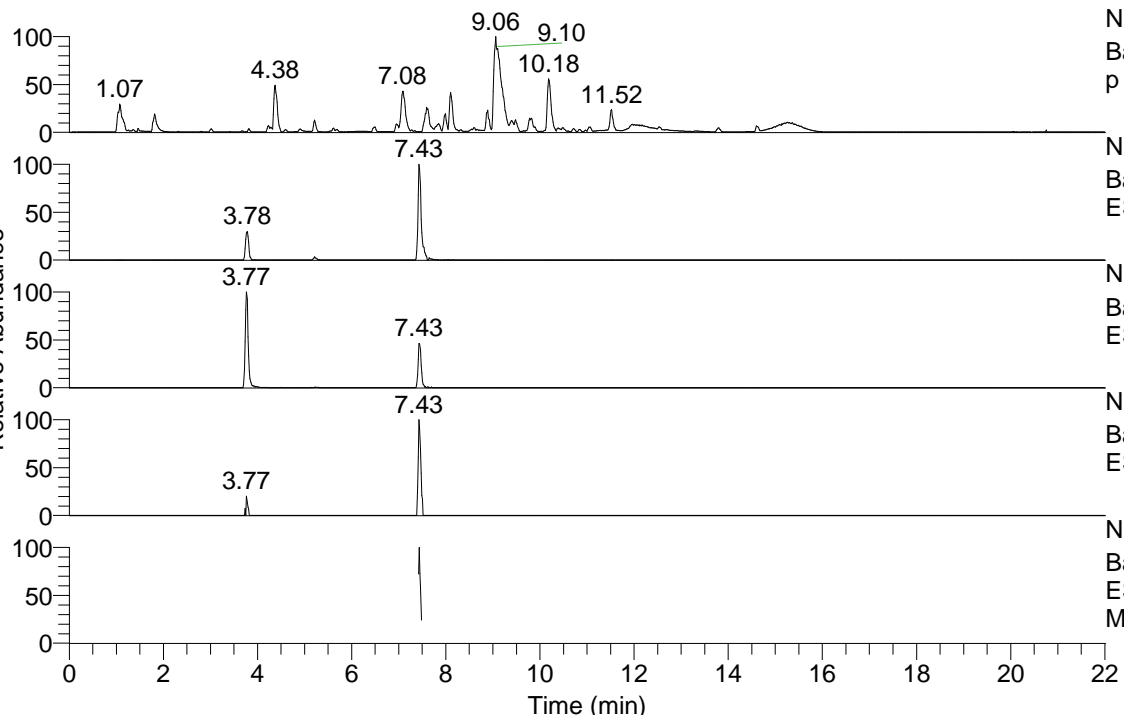


RT: 0.00 - 22.01



NL: 1.54E8  
 Base Peak m/z= 100.00000-1500.00000 F: FTMS + p ESI Full ms [100.00-1500.00] MS Aperta19

NL: 8.11E5  
 Base Peak m/z= 436.36297-436.36733 F: FTMS + p ESI Full ms [100.00-1500.00] MS Aperta19

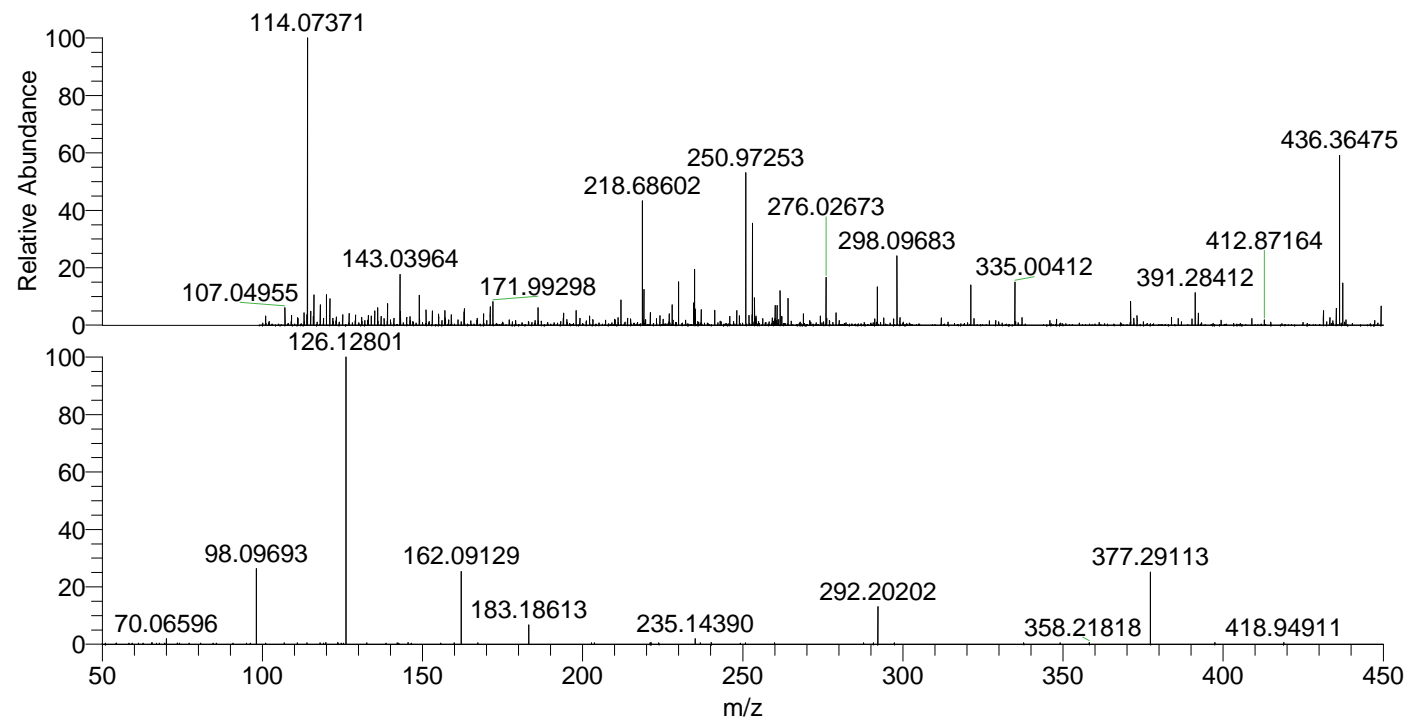
NL: 1.30E6  
 Base Peak m/z= 218.68540-218.68758 F: FTMS + p ESI Full ms [100.00-1500.00] MS Aperta19

NL: 3.23E4  
 Base Peak m/z= 550.35526-550.36076 F: FTMS + p ESI Full ms [100.00-1500.00] MS Aperta19

NL: 2.74E5  
 Base Peak m/z= 50.00000-1500.00000 F: FTMS + p ESI d Full ms2 436.36@hcd35.00 [50.00-465.00] MS Aperta19

Aperta19#2998-3023 RT: 7.42-7.48 AV: F: FTMS + p ESI d Full ms2 436.36 ...  
 m/z= 50.00000-1000.00000

m/z	Intensity	Relative
65.50095	955.7	0.57
70.06596	3308.8	1.96
98.09693	44447.6	26.36
113.94866	860.9	0.51
119.81602	1026.2	0.61
123.48522	851.2	0.50
126.12801	168620.5	100.00
142.12236	887.8	0.53
145.47517	958.5	0.57
159.87293	853.9	0.51
162.09129	42709.9	25.33
167.25953	866.1	0.51
183.18613	11338.4	6.72
202.74391	877.5	0.52
203.67971	860.0	0.51
221.10425	947.3	0.56
221.40226	970.0	0.58
235.14390	3383.1	2.01
236.72854	924.8	0.55
240.19646	1006.6	0.60
250.83785	844.1	0.50
287.71600	867.2	0.51
292.20202	21949.8	13.02
297.34982	845.4	0.50
349.09522	904.2	0.54
358.21818	975.0	0.58
377.29113	42967.7	25.48
397.42075	897.8	0.53
418.94911	959.8	0.57



NL: 1.34E6  
 Aperta19#3001 RT: 7.43 AV: 1 T: FTMS + p ESI Full lock ms [100.00-1500.00]

NL: 1.67E5  
 Aperta19#2990-3023 RT: 7.42-7.48 AV: 5 F: FTMS + p ESI d Full ms2 436.36@hcd35.00 [50.00-465.00]