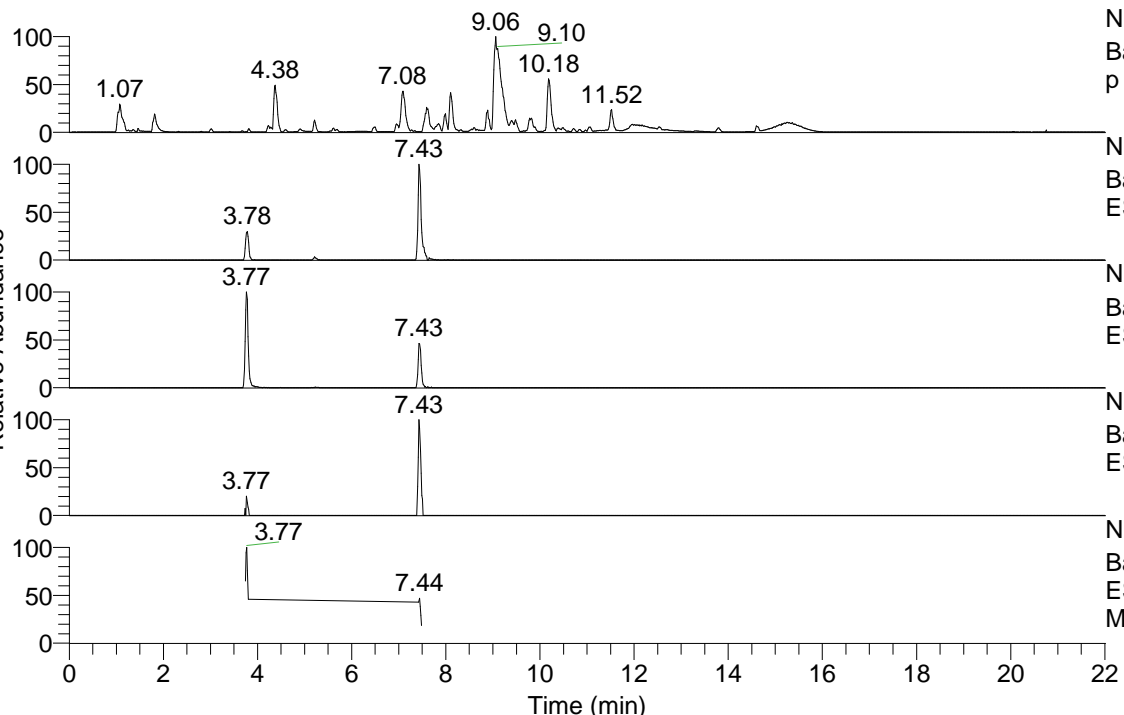


RT: 0.00 - 22.01



NL: 1.54E8
 Base Peak m/z= 100.00000-1500.00000 F: FTMS + p ESI Full ms [100.00-1500.00] MS Aperta19

NL: 8.11E5
 Base Peak m/z= 436.36297-436.36733 F: FTMS + p ESI Full ms [100.00-1500.00] MS Aperta19

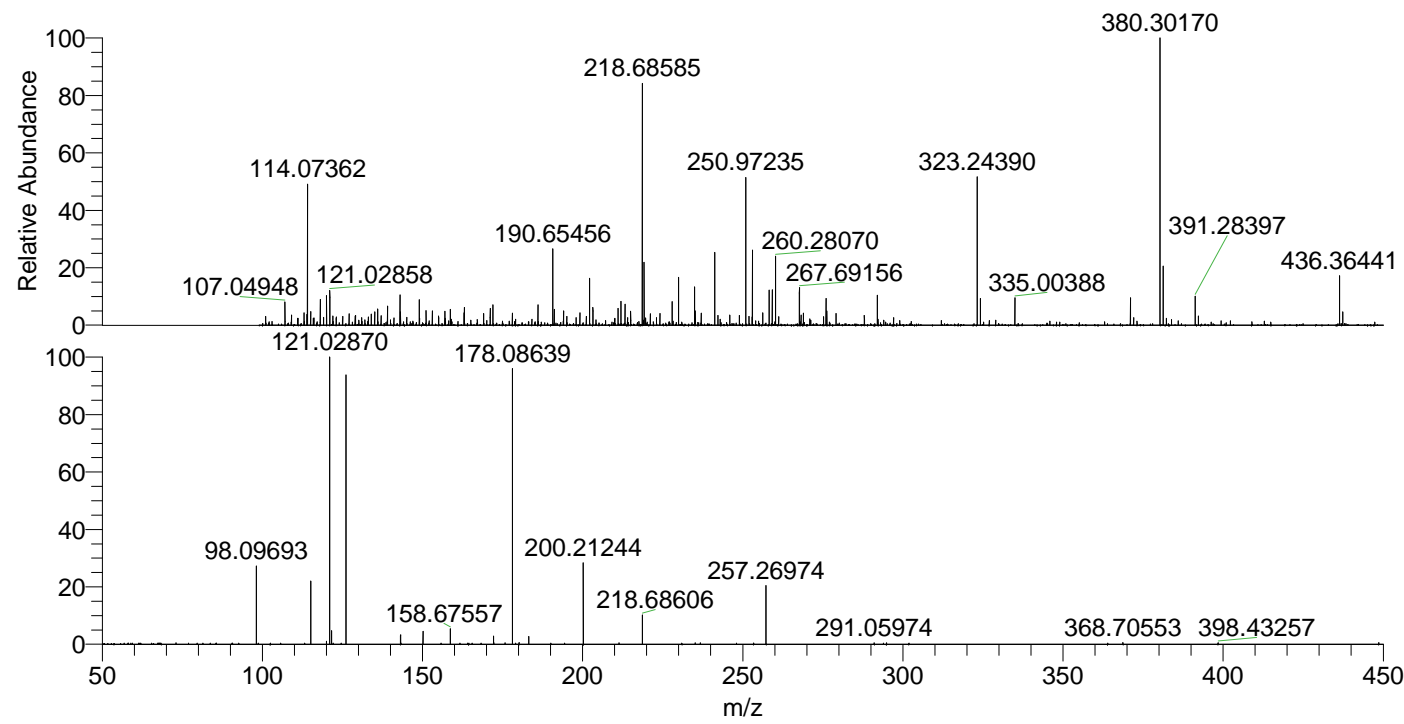
NL: 1.30E6
 Base Peak m/z= 218.68540-218.68758 F: FTMS + p ESI Full ms [100.00-1500.00] MS Aperta19

NL: 3.23E4
 Base Peak m/z= 550.35526-550.36076 F: FTMS + p ESI Full ms [100.00-1500.00] MS Aperta19

NL: 1.91E5
 Base Peak m/z= 50.00000-1500.00000 F: FTMS + p ESI d Full ms2 218.69@hcd35.00 [50.00-465.00] MS Aperta19

Aperta19#1516-1539 RT: 3.74-3.80 AV: F: FTMS + p ESI d Full ms2 218.69 ...

m/z	Intensity	Relative
98.09693	36072.5	27.50
115.12341	29745.8	22.68
120.03106	1355.4	1.03
121.02870	131175.5	100.00
121.63372	6259.9	4.77
126.12802	123583.8	94.21
143.15475	4305.3	3.28
150.16222	6154.6	4.69
158.67557	7297.8	5.56
172.18085	3735.8	2.85
178.08639	129146.9	98.45
180.14400	806.1	0.61
183.18570	3544.3	2.70
200.21244	38236.2	29.15
211.34788	720.9	0.55
218.68606	13514.1	10.30
257.26974	26947.4	20.54
291.05974	721.6	0.55
368.70553	747.9	0.57
398.43257	679.4	0.52



NL: 1.37E6
 Aperta19#1531 RT: 3.78 AV: 1 T: FTMS + p ESI Full lock ms [100.00-1500.00]

NL: 1.31E5
 Aperta19#1508-1545 RT: 3.74-3.80 AV: 5 F: FTMS + p ESI d Full ms2 218.69@hcd35.00 [50.00-465.00]