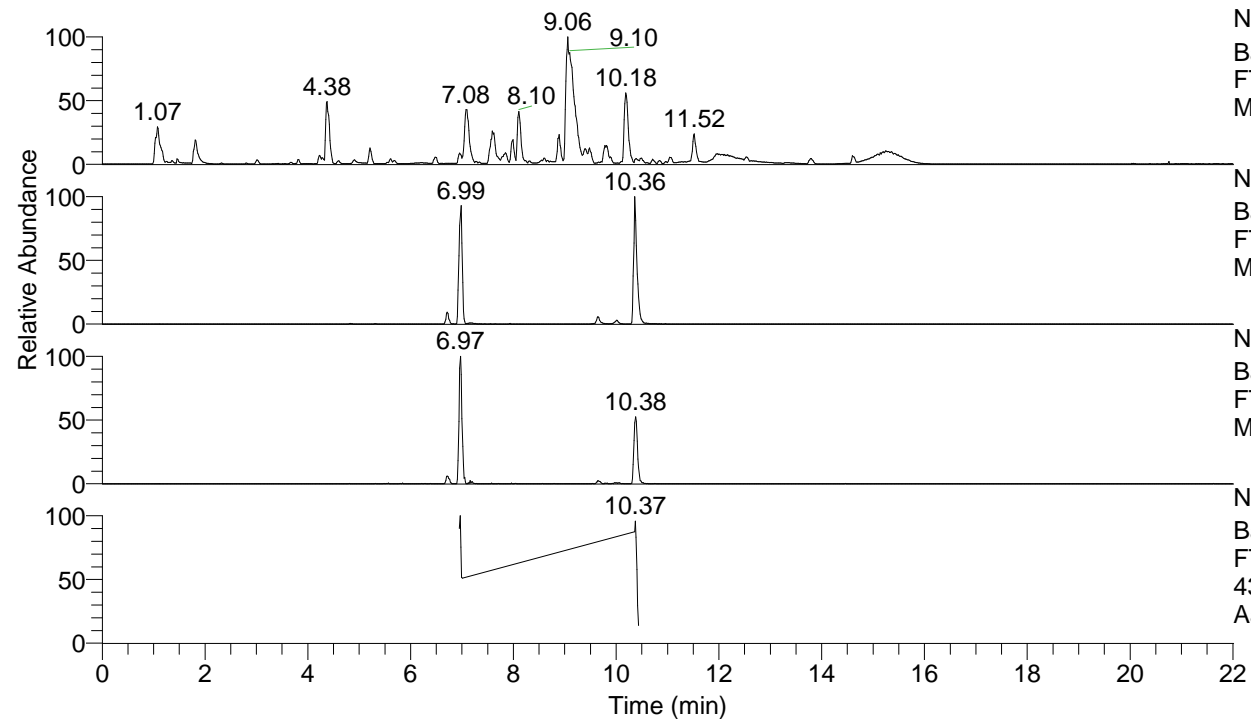


RT: 0.00 - 22.01



NL: 1.54E8
 Base Peak m/z= 100.00000-1500.00000 F:
 FTMS + p ESI Full ms [100.00-1500.00]
 MS Aperta19

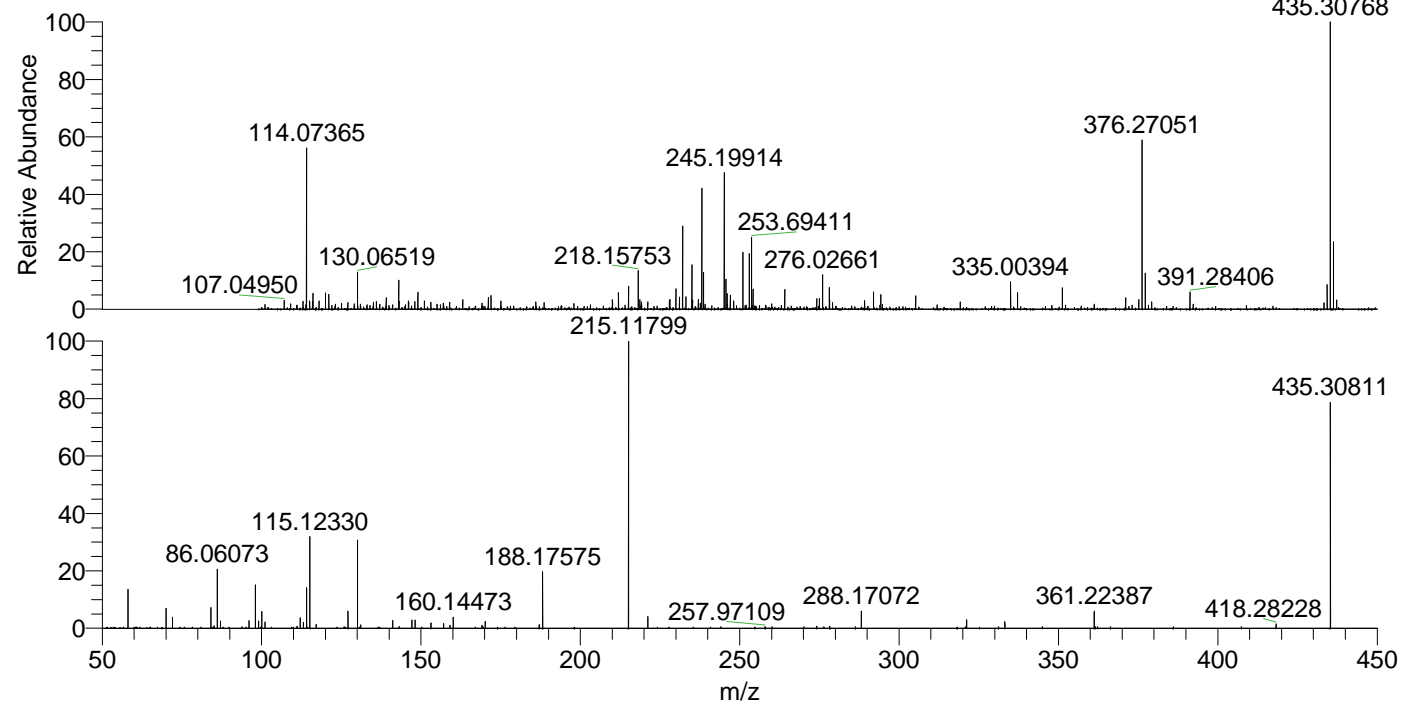
NL: 2.46E6
 Base Peak m/z= 435.30618-435.31054 F:
 FTMS + p ESI Full ms [100.00-1500.00]
 MS Aperta19

NL: 7.07E5
 Base Peak m/z= 218.15700-218.15918 F:
 FTMS + p ESI Full ms [100.00-1500.00]
 MS Aperta19

NL: 2.77E5
 Base Peak m/z= 50.00000-1500.00000 F:
 FTMS + p ESI d Full ms2
 435.31@hcd35.00 [50.00-460.00] MS
 Aperta19

Aperta19#4212-4242 RT: 10.36-10.43
 F: FTMS + p ESI d Full ms2 435.31 ...
 m/z= 50.00000-1000.00000

m/z	Intensity	Relative
58.06603	22255.4	13.56
70.06602	11377.8	6.93
72.08154	6277.1	3.82
84.08154	11920.5	7.26
85.07667	1473.6	0.90
86.06073	33679.2	20.52
87.09245	4125.3	2.51
96.08150	4365.3	2.66
98.09689	24771.5	15.09
99.09230	4061.9	2.47
100.07635	9778.2	5.96
101.10784	3651.1	2.22
111.09175	1200.1	0.73
112.07633	6004.2	3.66
113.10771	3419.0	2.08
114.09184	23214.3	14.14
115.12330	52686.5	32.10
117.10282	2342.3	1.43
127.12356	9787.3	5.96
130.06533	50662.8	30.86
131.11794	1947.0	1.19
141.13899	4493.3	2.74
143.11823	970.3	0.59
147.13700	4764.4	2.90
148.14492	4737.9	2.89
153.13932	3079.9	1.88
157.13401	2697.8	1.64
159.09202	1730.1	1.05
160.14473	6404.9	3.90
169.13382	1761.4	1.07
170.16518	4034.8	2.46
187.08639	2034.0	1.24
188.17575	32379.8	19.73
215.11799	164144.2	100.00
221.19780	6713.6	4.09
257.97109	833.2	0.51
270.15976	908.6	0.55
274.15459	1114.2	0.68
278.25338	1171.4	0.71
288.17072	9804.3	5.97
321.19241	4815.3	2.93
331.21322	893.6	0.54
333.19315	3744.8	2.28
361.22387	9857.0	6.01
362.28808	846.6	0.52
418.28228	2393.2	1.46
435.25005	1356.1	0.83
435.30811	129290.4	78.77



NL: 2.41E6
 Aperta19#4213 RT:
 10.36 AV: 1 T: FTMS + p
 ESI Full lock ms
 [100.00-1500.00]

NL: 1.64E5
 Aperta19#4118-4283 RT:
 10.36-10.43 AV: 6 F:
 FTMS + p ESI d Full ms2
 435.31@hcd35.00
 [50.00-460.00]