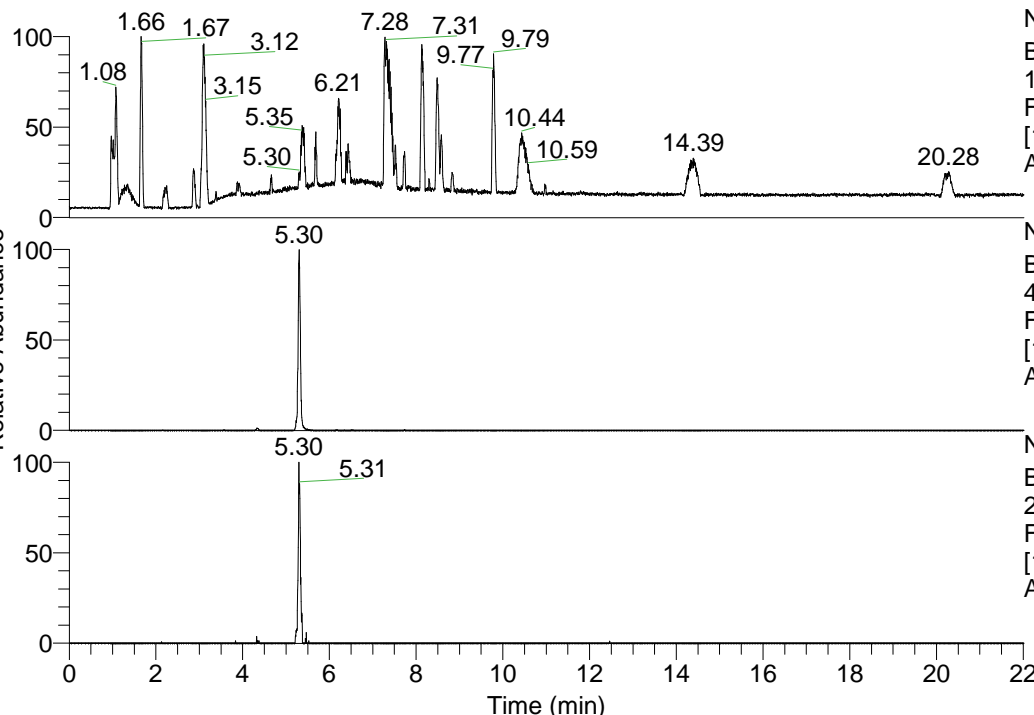


RT: 0.00 - 22.01



NL: 1.41E8
 Base Peak m/z=
 100.00000-1500.00000 F:
 FTMS + p ESI Full ms
 [100.00-1500.00] MS
 Aperta_HDX

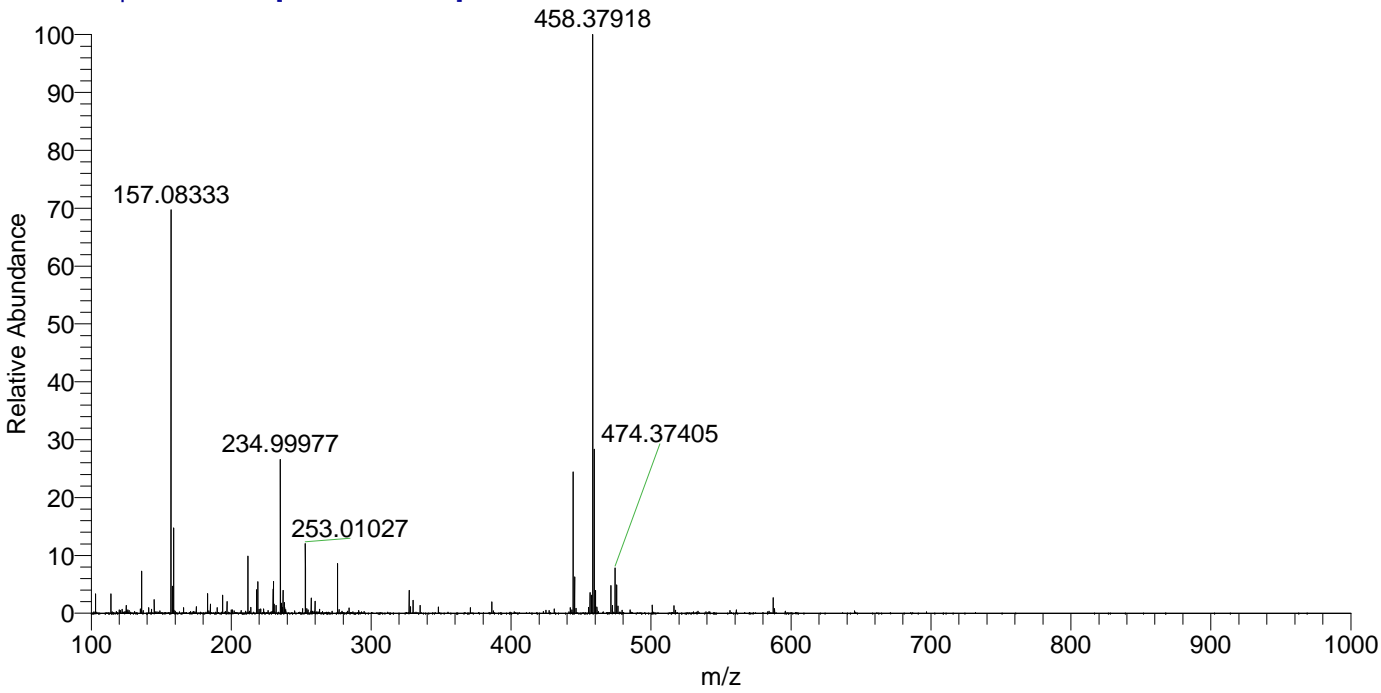
NL: 8.63E6
 Base Peak m/z=
 444.36264-444.36708 F:
 FTMS + p ESI Full ms
 [100.00-1500.00] MS
 Aperta_HDX

NL: 3.15E5
 Base Peak m/z=
 223.18836-223.19060 F:
 FTMS + p ESI Full ms
 [100.00-1500.00] MS
 Aperta_HDX

Aperta_HDX#865 RT: 5.30
 T: FTMS + p ESI Full ms [100.00-1500.00]
 m/z= 444.00000-445.00000

m/z	Intensity	Relative	Delta (ppm)	Composition
444.36377	8628103.0	100.00	-1.21	C ₂₂ H ₃₀ ² H ₉ O ₃ N ₆
			2.28	C ₂₂ H ₂₈ ² H ₁₀ O ₃ N ₆
			-4.69	C ₂₂ H ₃₂ ² H ₈ O ₃ N ₆
			-8.18	C ₂₂ H ₃₄ ² H ₇ O ₃ N ₆

Aperta_HDX #865 RT: 5.30 AV: 1 NL: 3.48E7
 T: FTMS + p ESI Full ms [100.00-1500.00]



Aperta_HDX #865 RT: 5.30 AV: 1 NL: 8.49E6
 T: FTMS + p ESI Full ms [100.00-1500.00]

