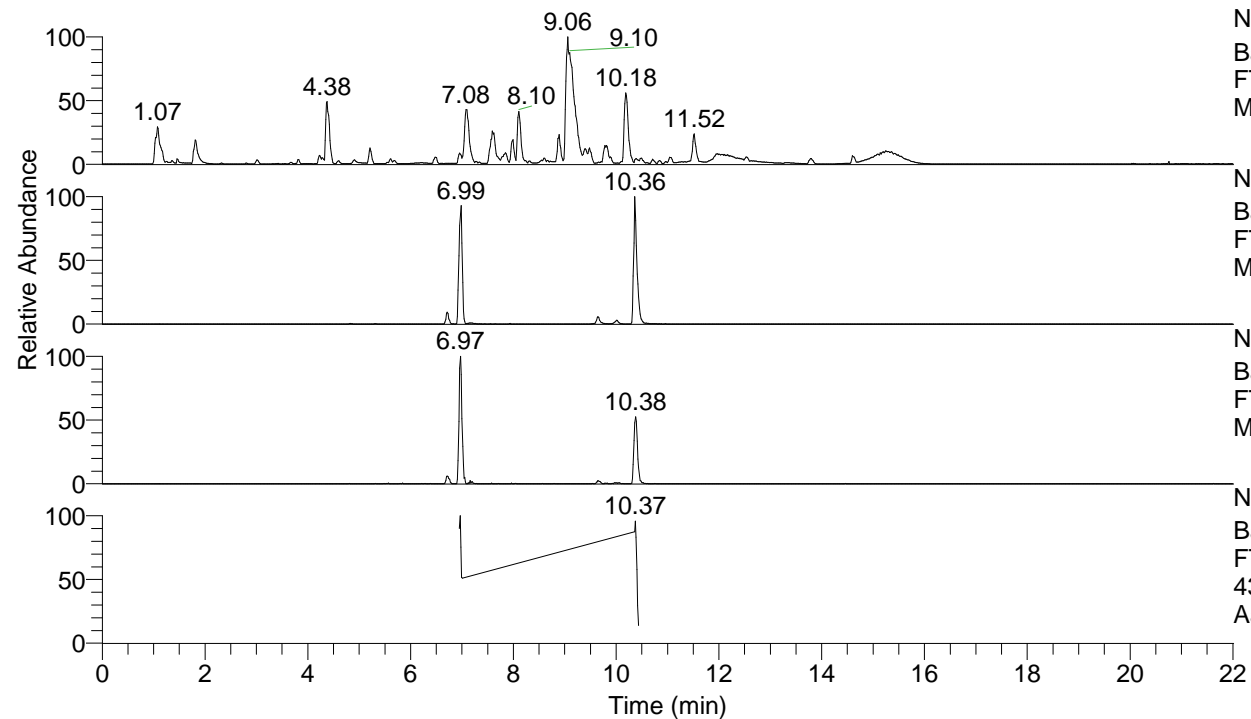


RT: 0.00 - 22.01



NL: 1.54E8
 Base Peak m/z= 100.00000-1500.00000 F:
 FTMS + p ESI Full ms [100.00-1500.00]
 MS Aperta19

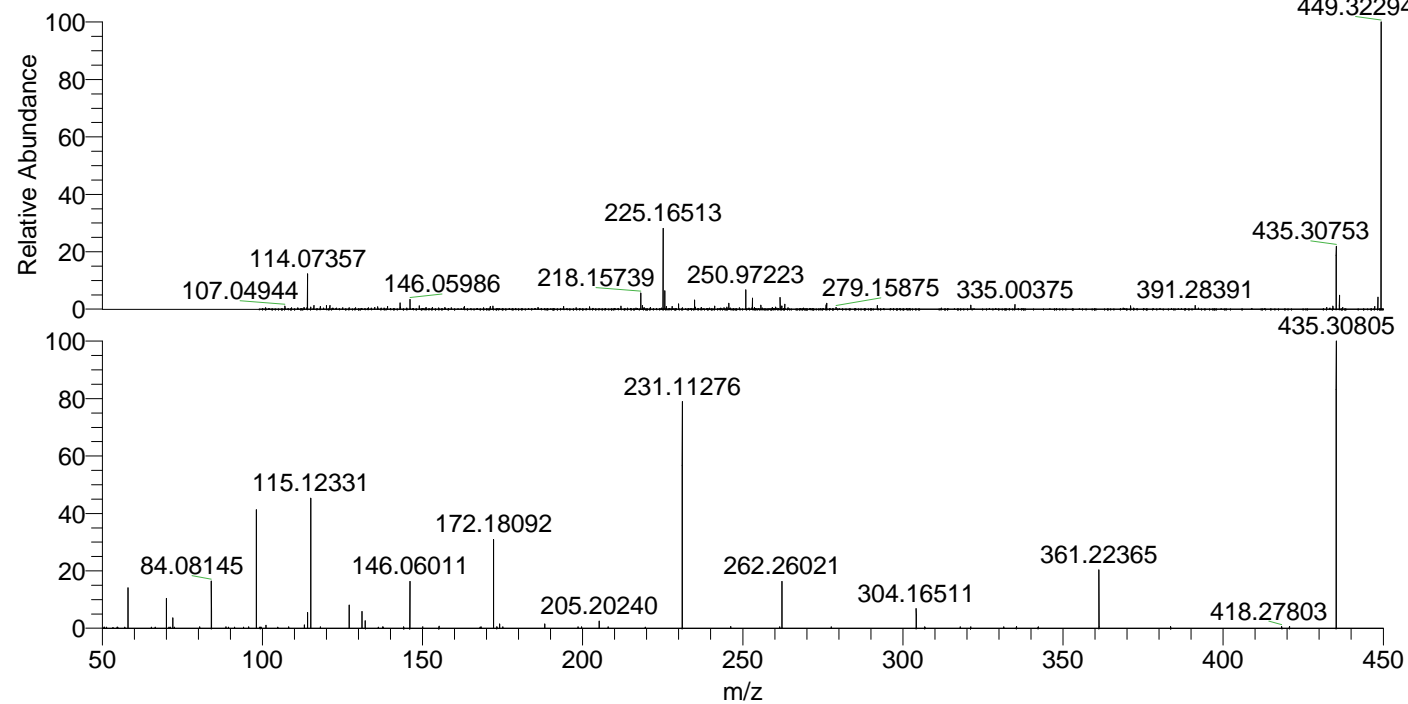
NL: 2.46E6
 Base Peak m/z= 435.30618-435.31054 F:
 FTMS + p ESI Full ms [100.00-1500.00]
 MS Aperta19

NL: 7.07E5
 Base Peak m/z= 218.15700-218.15918 F:
 FTMS + p ESI Full ms [100.00-1500.00]
 MS Aperta19

NL: 2.77E5
 Base Peak m/z= 50.00000-1500.00000 F:
 FTMS + p ESI d Full ms2
 435.31@hcd35.00 [50.00-460.00] MS
 Aperta19

Aperta19#2806-2818 RT: 6.96-6.99 AV:
 F: FTMS + p ESI d Full ms2 435.31 ...
 m/z= 50.00000-1000.00000

m/z	Intensity	Relative
54.69236	1196.8	0.58
58.06600	30287.9	14.74
65.30502	1255.2	0.61
70.06594	21156.5	10.30
70.85389	1186.6	0.58
72.08151	8772.9	4.27
80.43491	1337.4	0.65
84.08144	35713.6	17.39
88.61031	1549.5	0.75
89.38532	1206.2	0.59
94.16098	1279.1	0.62
95.69987	1298.1	0.63
98.09143	1951.2	0.95
98.09695	88531.6	43.10
98.10248	1699.5	0.83
99.37618	1221.8	0.59
99.58895	1273.0	0.62
101.10791	3038.9	1.48
108.19252	1378.8	0.67
113.10816	3564.3	1.74
114.09182	9820.1	4.78
115.12332	97999.0	47.71
118.14621	1345.9	0.66
127.12323	20062.2	9.77
131.11801	14201.6	6.91
132.14957	4912.2	2.39
137.62736	1467.5	0.71
137.74425	1249.5	0.61
144.14942	1610.0	0.78
146.06007	35563.2	17.31
150.05090	1356.8	0.66
168.26085	1292.1	0.63
172.18091	63175.7	30.75
173.23793	1431.0	0.70
174.05569	3079.3	1.50
175.06178	1332.5	0.65
188.17637	1552.4	0.76
199.70852	1476.4	0.72
205.20273	5074.6	2.47
207.97173	1510.4	0.74
219.54081	1224.7	0.60
231.11282	171961.9	83.71
261.52246	1488.7	0.72
262.26027	33349.0	16.23
277.62044	1396.3	0.68
304.16550	13094.2	6.37
306.86406	1453.2	0.71
317.90197	1499.1	0.73
321.19162	1420.5	0.69
331.51476	1369.1	0.67
342.26568	1583.8	0.77
361.22336	44265.7	21.55
383.60811	1602.1	0.78
420.72310	1734.1	0.84
435.30800	205421.5	100.00



NL: 1.03E7
 Aperta19#2815 RT: 6.99
 AV: 1 T: FTMS + p ESI
 Full lock ms
 [100.00-1500.00]

NL: 2.14E5
 Aperta19#2796-2820
 RT: 6.95-6.99 AV: 4 F:
 FTMS + p ESI d Full ms2
 435.31@hcd35.00
 [50.00-460.00]