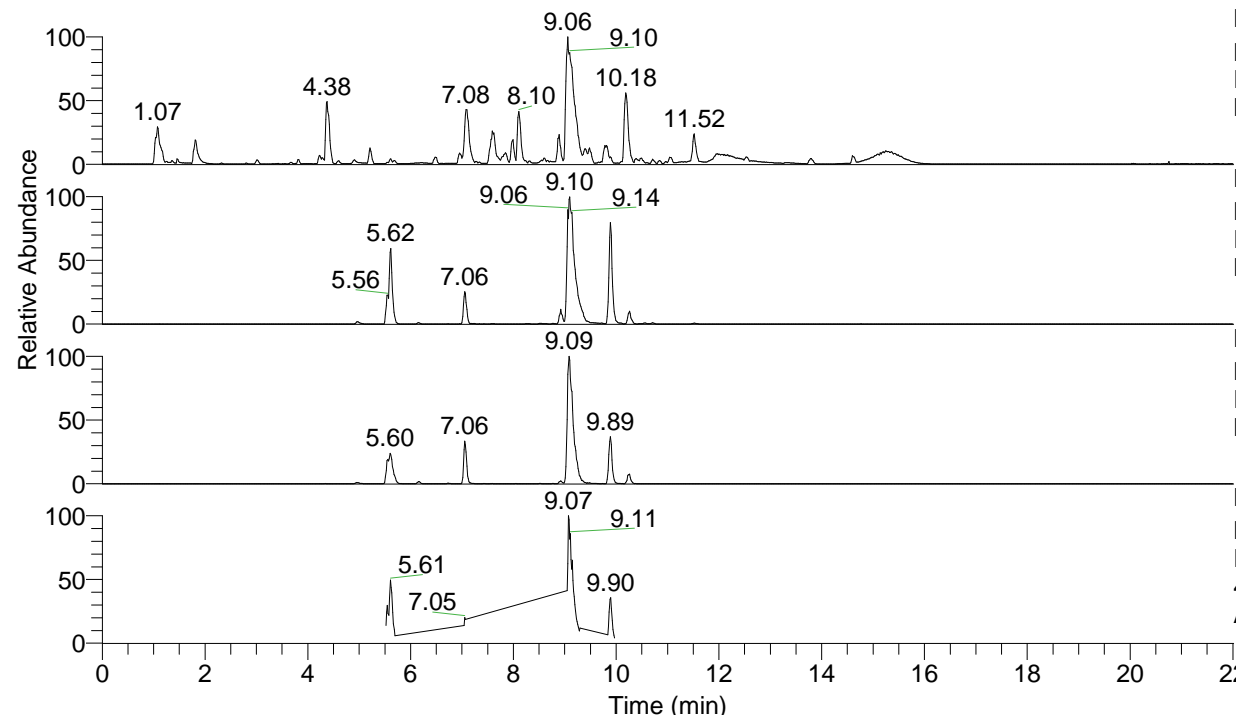


RT: 0.00 - 22.01



NL: 1.54E8
 Base Peak m/z= 100.00000-1500.00000 F:
 FTMS + p ESI Full ms [100.00-1500.00]
 MS Aperta19

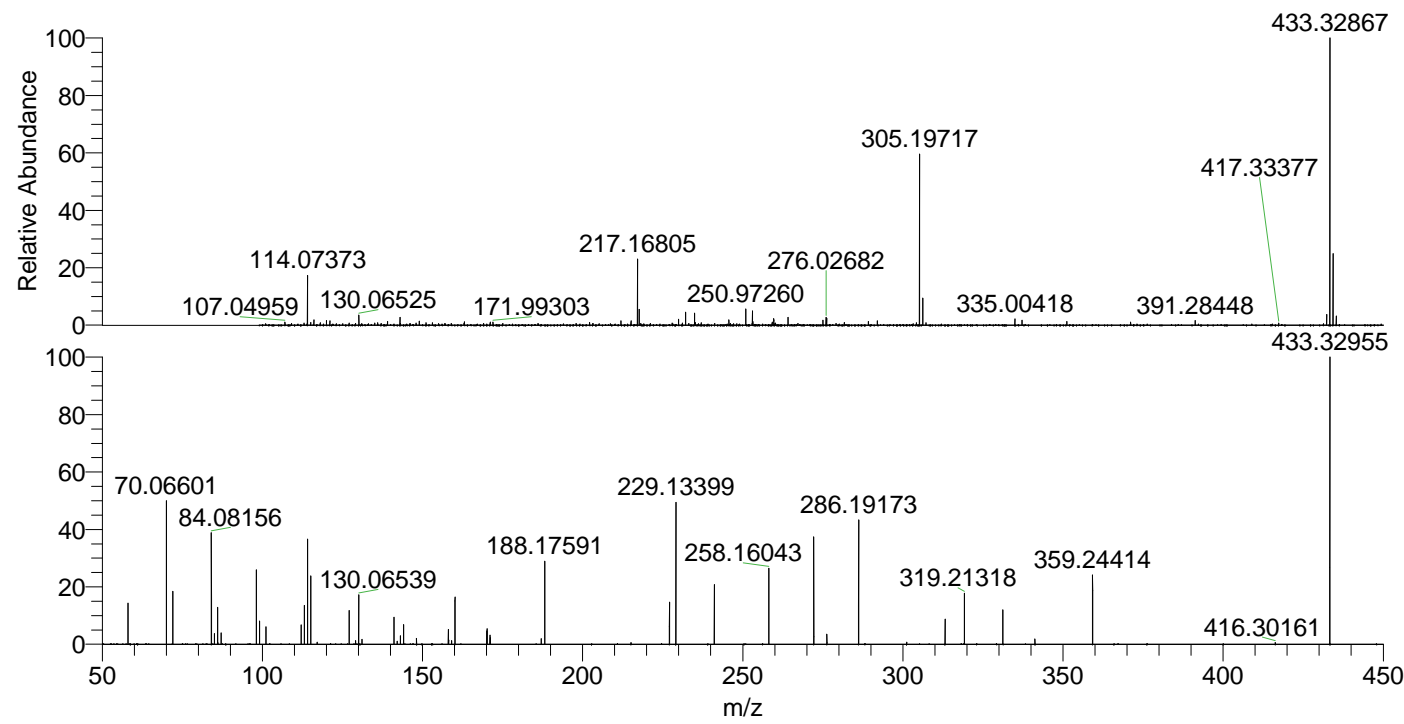
NL: 1.13E7
 Base Peak m/z= 433.32693-433.33127 F:
 FTMS + p ESI Full ms [100.00-1500.00]
 MS Aperta19

NL: 5.54E6
 Base Peak m/z= 217.16737-217.16955 F:
 FTMS + p ESI Full ms [100.00-1500.00]
 MS Aperta19

NL: 1.70E6
 Base Peak m/z= 50.00000-1500.00000 F:
 FTMS + p ESI d Full ms2
 433.33@hcd35.00 [50.00-460.00] MS
 Aperta19

Aperta19#4000-4034 RT: 9.85-9.94 AV:
 F: FTMS + p ESI d Full ms2 433.33 ...
 m/z= 50.00000-1000.00000

m/z	Intensity	Relative
58.06608	52690.3	14.20
70.06601	184527.6	49.72
70.06988	2470.9	0.67
72.08161	68299.0	18.40
84.08156	142993.4	38.53
85.07679	13960.1	3.76
86.06078	47255.4	12.73
87.09247	14389.6	3.88
98.09708	95818.9	25.82
99.09233	29643.1	7.99
101.10795	23300.1	6.28
112.11259	25376.4	6.84
113.10791	50681.4	13.66
114.09186	134359.9	36.20
115.12343	88685.7	23.89
117.10264	2566.4	0.69
127.08697	4780.5	1.29
127.12335	43368.5	11.68
129.13896	4658.5	1.26
130.06539	63328.2	17.06
131.11843	6214.9	1.67
141.13901	34761.4	9.37
142.13460	4025.9	1.08
143.11823	11117.3	3.00
144.08111	25236.6	6.80
148.14513	7592.1	2.05
158.06038	19209.1	5.18
158.16562	5528.1	1.49
159.09174	4987.4	1.34
160.14470	61107.6	16.46
170.06058	17545.4	4.73
170.16575	20432.6	5.51
171.09235	11803.0	3.18
171.14982	8471.4	2.28
187.08743	7400.2	1.99
188.17591	106752.6	28.76
227.11796	53992.7	14.55
229.13399	181905.0	49.01
241.13390	78067.4	21.03
258.16043	97289.1	26.21
272.17595	137744.2	37.11
276.27679	13066.0	3.52
286.19173	163563.6	44.07
301.20373	2574.3	0.69
313.20316	32933.3	8.87
319.21318	66395.0	17.89
331.21307	45155.0	12.17
341.23382	6714.9	1.81
359.24414	88838.3	23.94
416.30161	2335.2	0.63
433.32955	371152.4	100.00



NL: 8.89E6
 Aperta19#4015 RT: 9.89
 AV: 1 T: FTMS + p ESI
 Full lock ms
 [100.00-1500.00]

NL: 3.67E5
 Aperta19#3996-4039
 RT: 9.85-9.94 AV: 7 F:
 FTMS + p ESI d Full ms2
 433.33@hcd35.00
 [50.00-460.00]