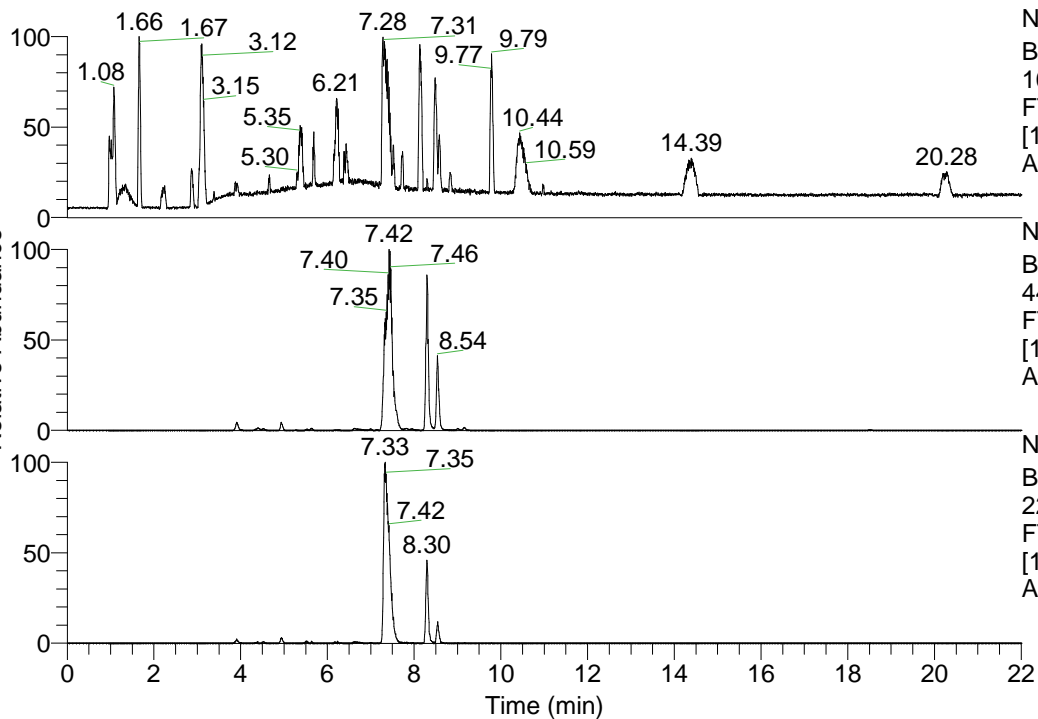


RT: 0.00 - 22.01



NL: 1.41E8
 Base Peak m/z=
 100.00000-1500.00000 F:
 FTMS + p ESI Full ms
 [100.00-1500.00] MS
 Aperta_HDX

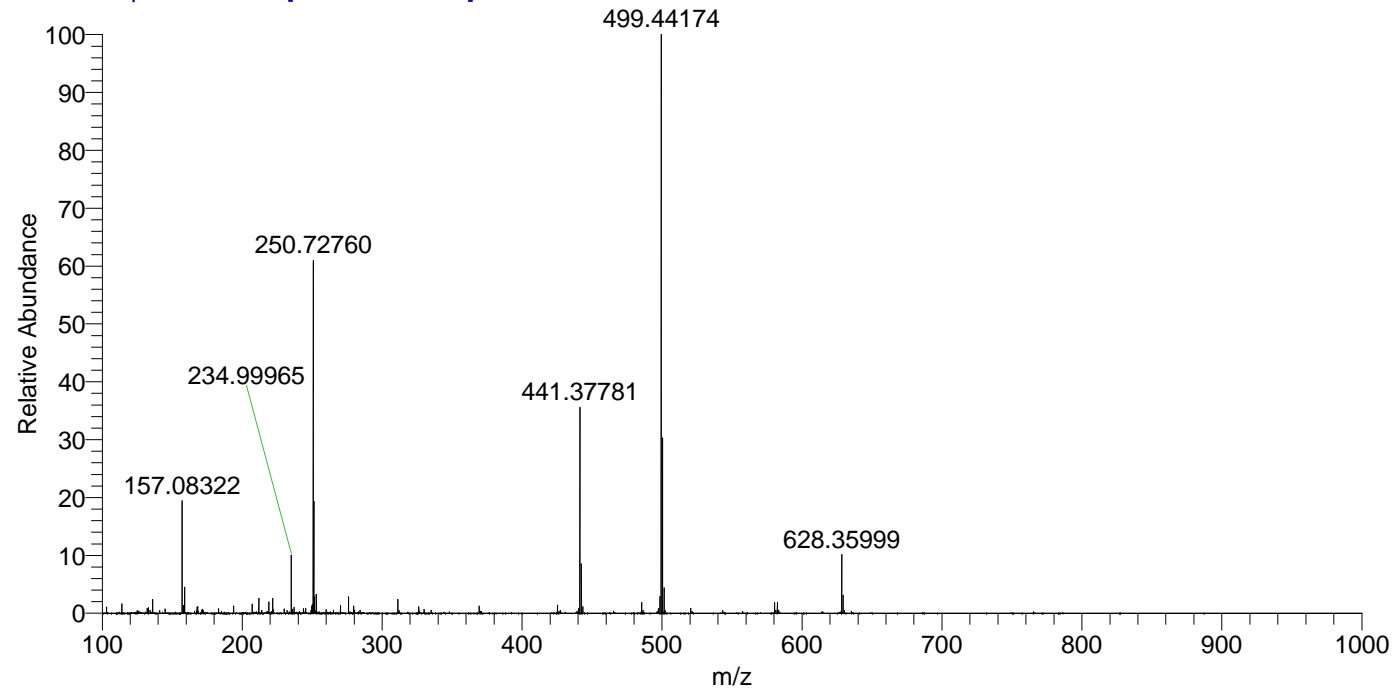
NL: 3.51E7
 Base Peak m/z=
 441.37711-441.38153 F:
 FTMS + p ESI Full ms
 [100.00-1500.00] MS
 Aperta_HDX

NL: 4.00E6
 Base Peak m/z=
 221.69560-221.69782 F:
 FTMS + p ESI Full ms
 [100.00-1500.00] MS
 Aperta_HDX

Aperta_HDX#1230 RT: 7.42
 T: FTMS + p ESI Full ms [100.00-1500.00]
 m/z = 441.00000-442.00000

m/z	Intensity	Relative	Delta (ppm)	Composition
441.37781	35069572.0	100.00	1.34	C ₂₃ H ₃₁ ² H ₉ O ₂ N ₆
			-2.17	C ₂₃ H ₃₃ ² H ₈ O ₂ N ₆
			4.85	C ₂₃ H ₂₉ ² H ₁₀ O ₂ N ₆
			-5.68	C ₂₃ H ₃₅ ² H ₇ O ₂ N ₆
			-9.18	C ₂₃ H ₃₇ ² H ₆ O ₂ N ₆

Aperta_HDX #1230 RT: 7.42 AV: 1 NL: 9.85E7
 T: FTMS + p ESI Full ms [100.00-1500.00]



Aperta_HDX #1230 RT: 7.42 AV: 1 NL: 3.50E7
 T: FTMS + p ESI Full ms [100.00-1500.00]

