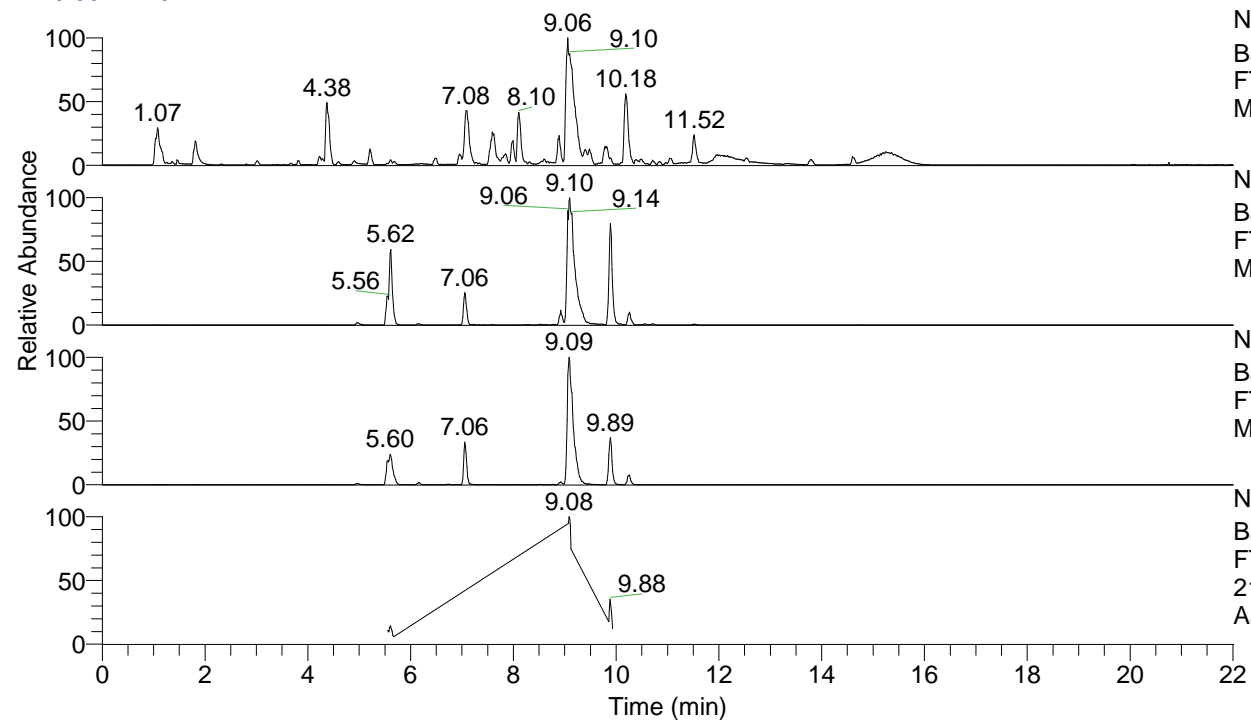


RT: 0.00 - 22.01



NL: 1.54E8
 Base Peak m/z= 100.00000-1500.00000 F:
 FTMS + p ESI Full ms [100.00-1500.00]
 MS Aperta19

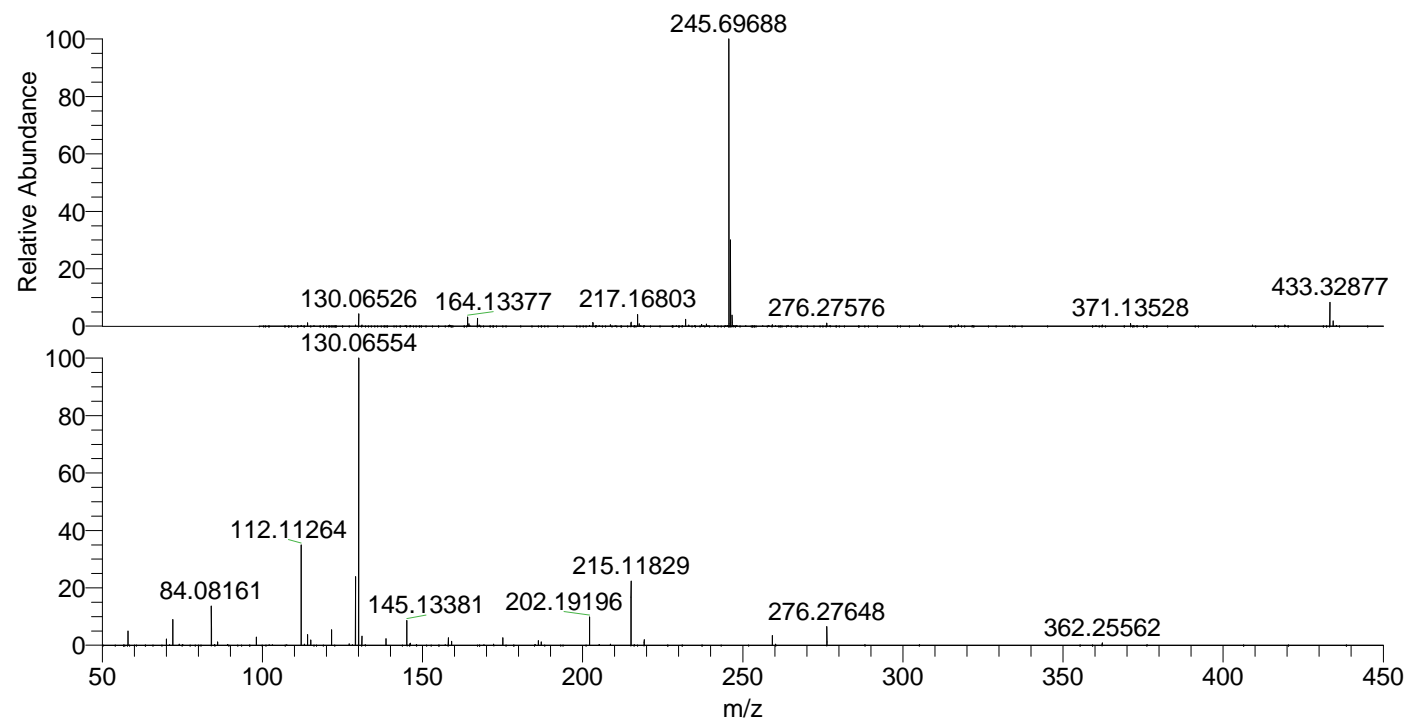
NL: 1.13E7
 Base Peak m/z= 433.32693-433.33127 F:
 FTMS + p ESI Full ms [100.00-1500.00]
 MS Aperta19

NL: 5.54E6
 Base Peak m/z= 217.16737-217.16955 F:
 FTMS + p ESI Full ms [100.00-1500.00]
 MS Aperta19

NL: 1.79E6
 Base Peak m/z= 50.00000-1500.00000 F:
 FTMS + p ESI d Full ms2
 217.17@hcd35.00 [50.00-460.00] MS
 Aperta19

Aaperta19#3672-3696 RT: 9.07-9.12 AV: 5
 F: FTMS + p ESI d Full ms2 217.17@h ...
 m/z= 50.00000-1000.00000

m/z	Intensity	Relative
58.06610	76150.8	4.93
70.06605	33462.2	2.17
72.08166	141087.2	9.14
84.08161	212244.3	13.74
86.06080	18715.1	1.21
98.09707	44898.1	2.91
112.11264	551230.4	35.69
114.09195	57064.0	3.69
115.12340	29228.5	1.89
121.61555	85449.9	5.53
129.13902	370109.4	23.96
130.06554	1544376.4	100.00
130.12862	83403.3	5.40
131.06888	13743.6	0.89
131.11824	50827.0	3.29
138.64185	35094.9	2.27
145.13381	135046.0	8.74
146.06065	8376.1	0.54
146.16565	11465.1	0.74
158.06043	41119.8	2.66
159.09192	21372.0	1.38
175.06322	40013.8	2.59
186.19701	25170.7	1.63
187.08706	18068.2	1.17
202.19196	155905.0	10.10
215.11829	348995.3	22.60
219.21835	29832.9	1.93
259.24974	52563.8	3.40
276.27648	100579.3	6.51
362.25562	13337.9	0.86



NL: 1.33E8
 Aaperta19#3685 RT: 9.10
 AV: 1 T: FTMS + p ESI
 Full ms [100.00-1500.00]

NL: 1.54E6
 Aaperta19#3664-3701
 RT: 9.07-9.12 AV: 5 F:
 FTMS + p ESI d Full ms2
 217.17@hcd35.00
 [50.00-460.00]