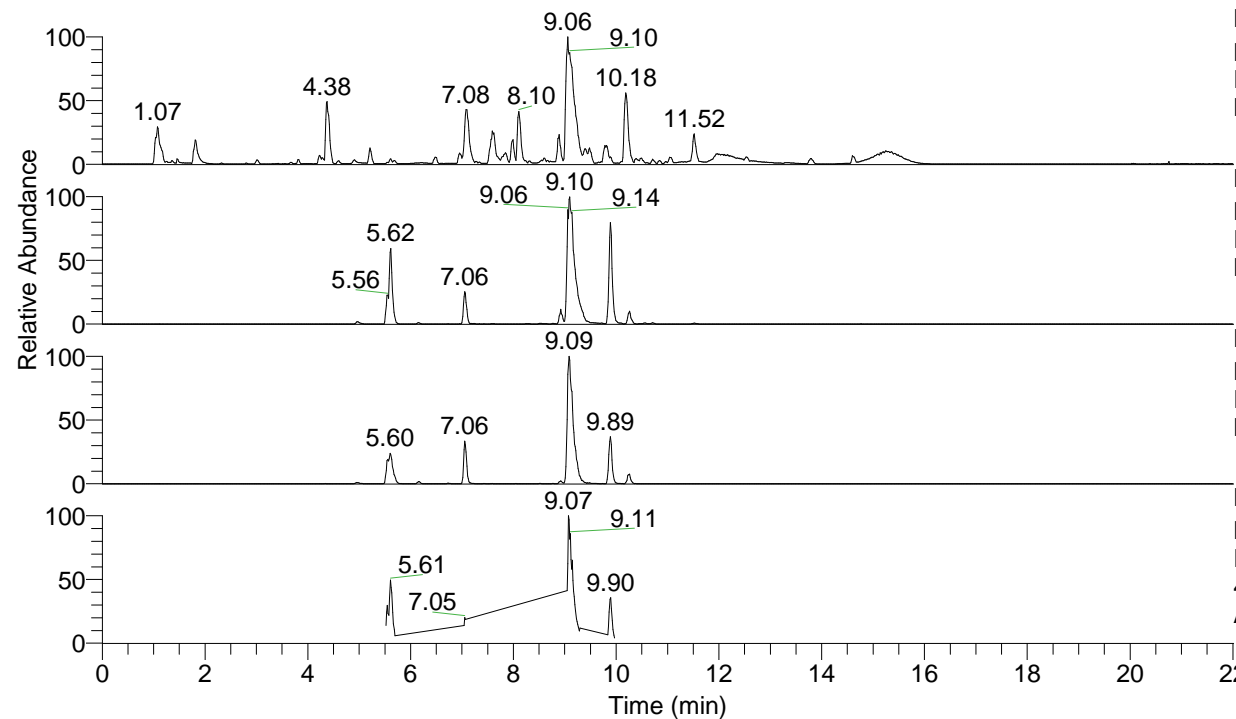


RT: 0.00 - 22.01



NL: 1.54E8  
 Base Peak m/z= 100.00000-1500.00000 F:  
 FTMS + p ESI Full ms [100.00-1500.00]  
 MS Aperta19

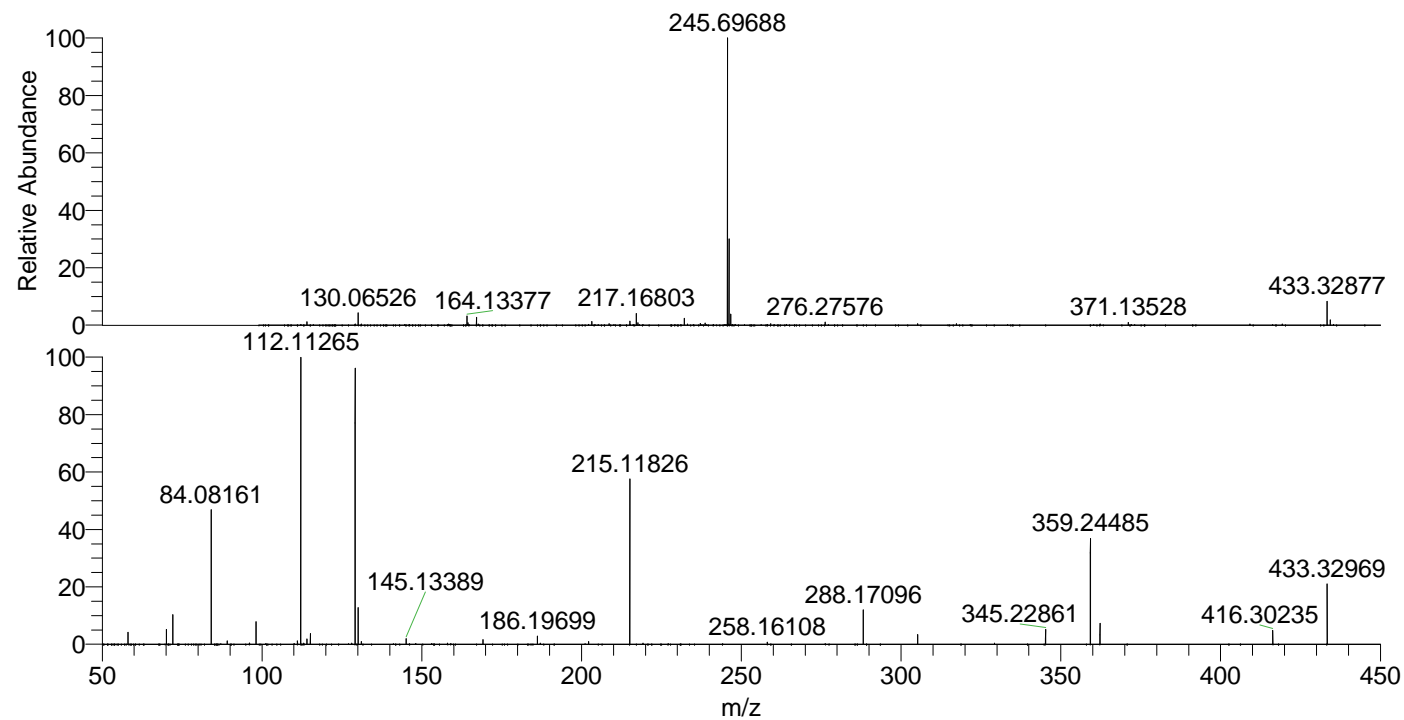
NL: 1.13E7  
 Base Peak m/z= 433.32693-433.33127 F:  
 FTMS + p ESI Full ms [100.00-1500.00]  
 MS Aperta19

NL: 5.54E6  
 Base Peak m/z= 217.16737-217.16955 F:  
 FTMS + p ESI Full ms [100.00-1500.00]  
 MS Aperta19

NL: 1.70E6  
 Base Peak m/z= 50.00000-1500.00000 F:  
 FTMS + p ESI d Full ms2  
 433.33@hcd35.00 [50.00-460.00] MS  
 Aperta19

Aperta19#3660-3724 RT: 9.05-9.18 AV: 12  
 F: FTMS + p ESI d Full ms2 433.33@h ...  
 m/z= 50.00000-1000.00000

m/z	Intensity	Relative
58.06608	41582.3	4.09
70.06603	51077.6	5.02
72.08163	103599.1	10.19
84.08161	465801.0	45.80
89.10809	11693.7	1.15
98.09709	78859.7	7.75
111.10491	11949.9	1.18
112.11265	1016958.4	100.00
114.09193	17742.7	1.74
115.12349	38290.3	3.77
129.13902	954817.5	93.89
130.06548	126951.0	12.48
131.11837	8997.2	0.88
145.13389	20241.1	1.99
169.17050	16574.4	1.63
186.19699	29396.7	2.89
202.19201	9852.0	0.97
215.11826	576796.7	56.72
258.16108	6940.4	0.68
288.17096	119689.5	11.77
305.19760	34195.3	3.36
345.22861	52114.7	5.12
359.24485	366385.7	36.03
362.25547	72995.1	7.18
416.30235	48950.0	4.81
433.32969	212443.1	20.89



NL: 1.33E8  
 Aperta19#3685 RT: 9.10  
 AV: 1 T: FTMS + p ESI  
 Full ms [100.00-1500.00]

NL: 9.92E5  
 Aperta19#3657-3725  
 RT: 9.05-9.18 AV: 12 F:  
 FTMS + p ESI d Full ms2  
 433.33@hcd35.00 [50.00-460.00]