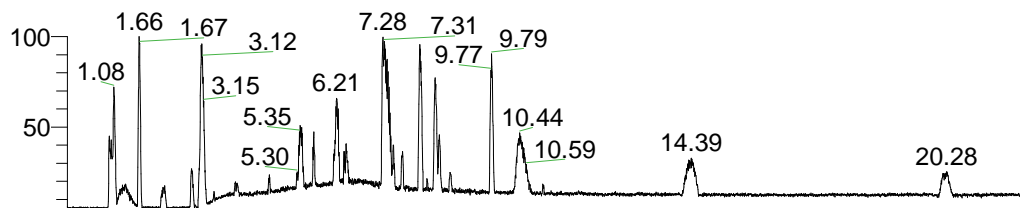


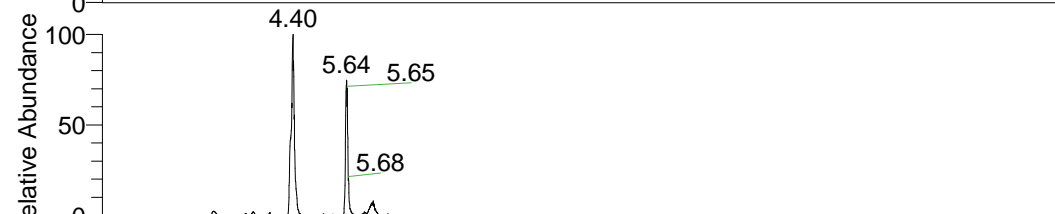
RT: 0.00 - 22.01



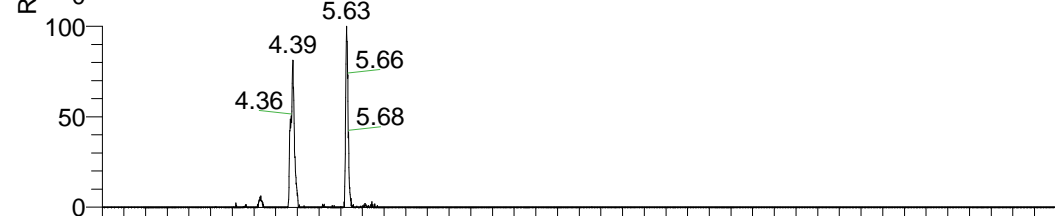
NL: 1.41E8
 Base Peak m/z=
 100.00000-1500.00000 F:
 FTMS + p ESI Full ms
 [100.00-1500.00] MS
 Aperta_HDX

Aperta_HDX#924 RT: 5.64
 T: FTMS + p ESI Full ms [100.00-1500.00]
 m/z= 442.00000-443.00000

m/z	Intensity	Relative	Delta (ppm)	Composition
442.38443	12917828.0	100.00	-1.38	C ₂₃ H ₃₂ ² H ₉ O ₂ N ₆
			2.12	C ₂₃ H ₃₀ ² H ₁₀ O ₂ N ₆
			-4.88	C ₂₃ H ₃₄ ² H ₈ O ₂ N ₆
			-8.38	C ₂₃ H ₃₆ ² H ₇ O ₂ N ₆

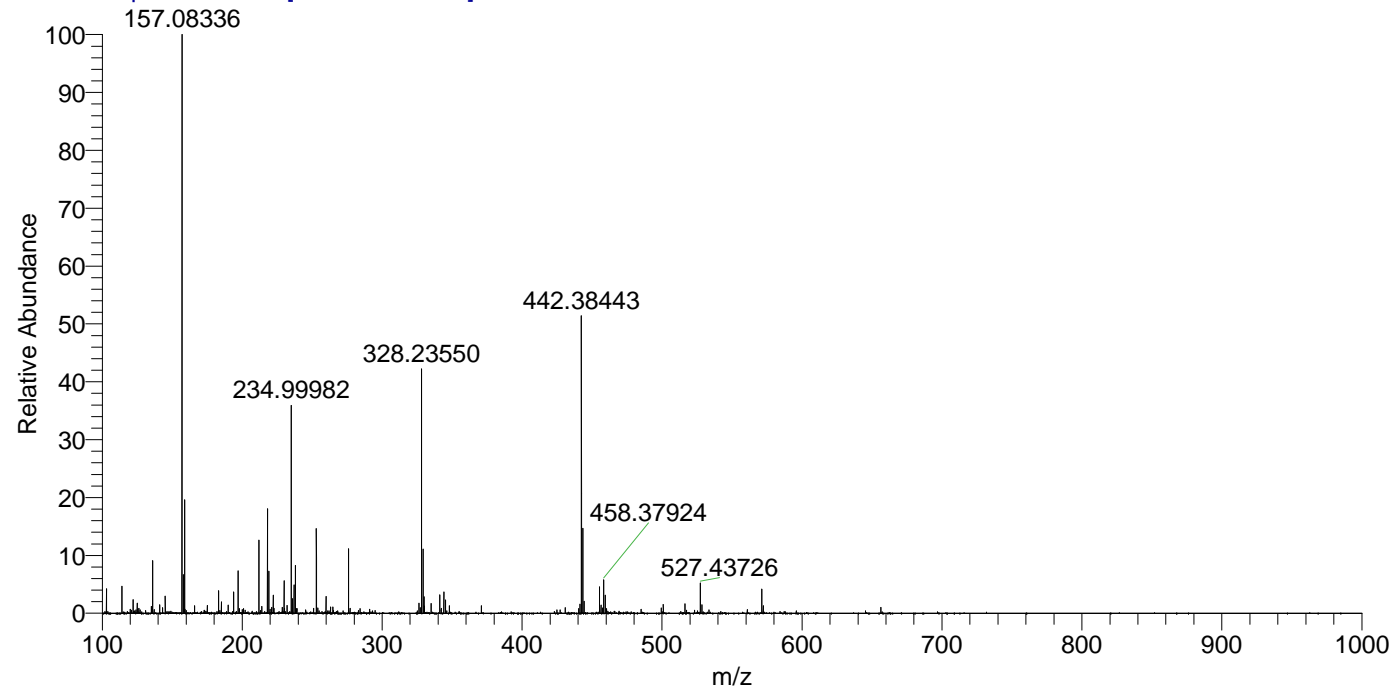


NL: 1.73E7
 Base Peak m/z=
 442.38338-442.38780 F:
 FTMS + p ESI Full ms
 [100.00-1500.00] MS
 Aperta_HDX



NL: 8.24E5
 Base Peak m/z=
 222.19874-222.20096 F:
 FTMS + p ESI Full ms
 [100.00-1500.00] MS
 Aperta_HDX

Aperta_HDX #924 RT: 5.64 AV: 1 NL: 2.49E7
 T: FTMS + p ESI Full ms [100.00-1500.00]



Aperta_HDX #924 RT: 5.64 AV: 1 NL: 1.28E7
 T: FTMS + p ESI Full ms [100.00-1500.00]

