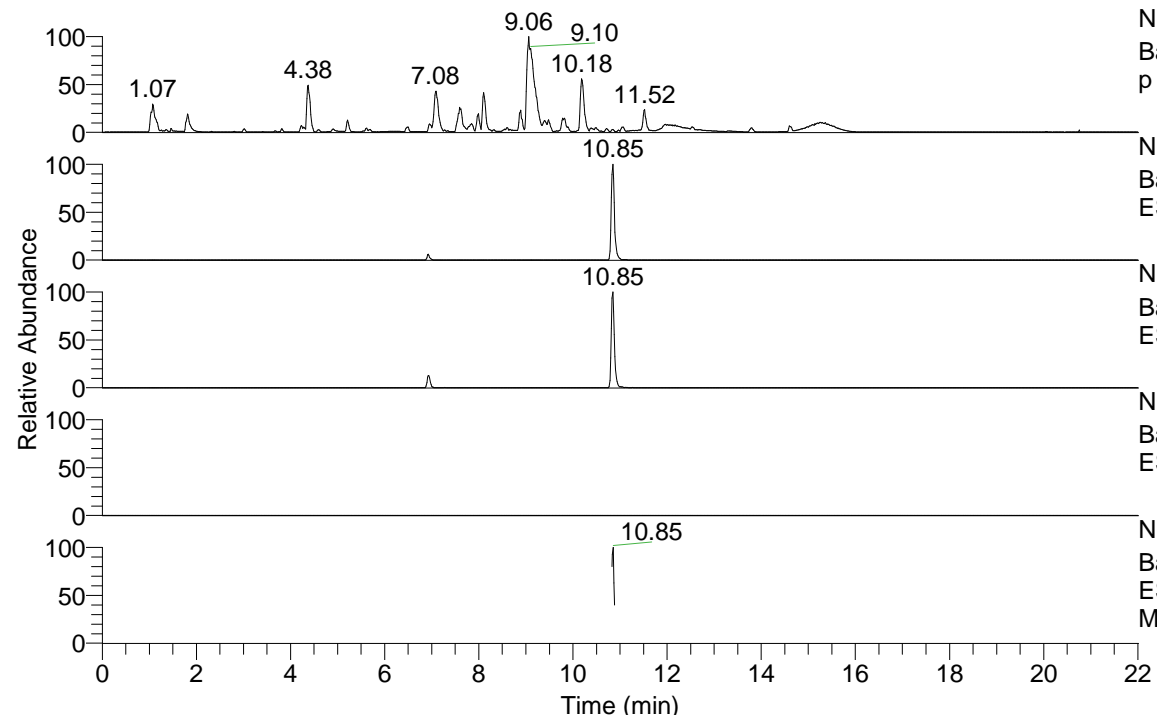


RT: 0.00 - 22.01



NL: 1.54E8
 Base Peak m/z= 100.00000-1500.00000 F: FTMS + p ESI Full ms [100.00-1500.00] MS Aperta19

NL: 4.71E6
 Base Peak m/z= 432.33169-432.33601 F: FTMS + p ESI Full ms [100.00-1500.00] MS Aperta19

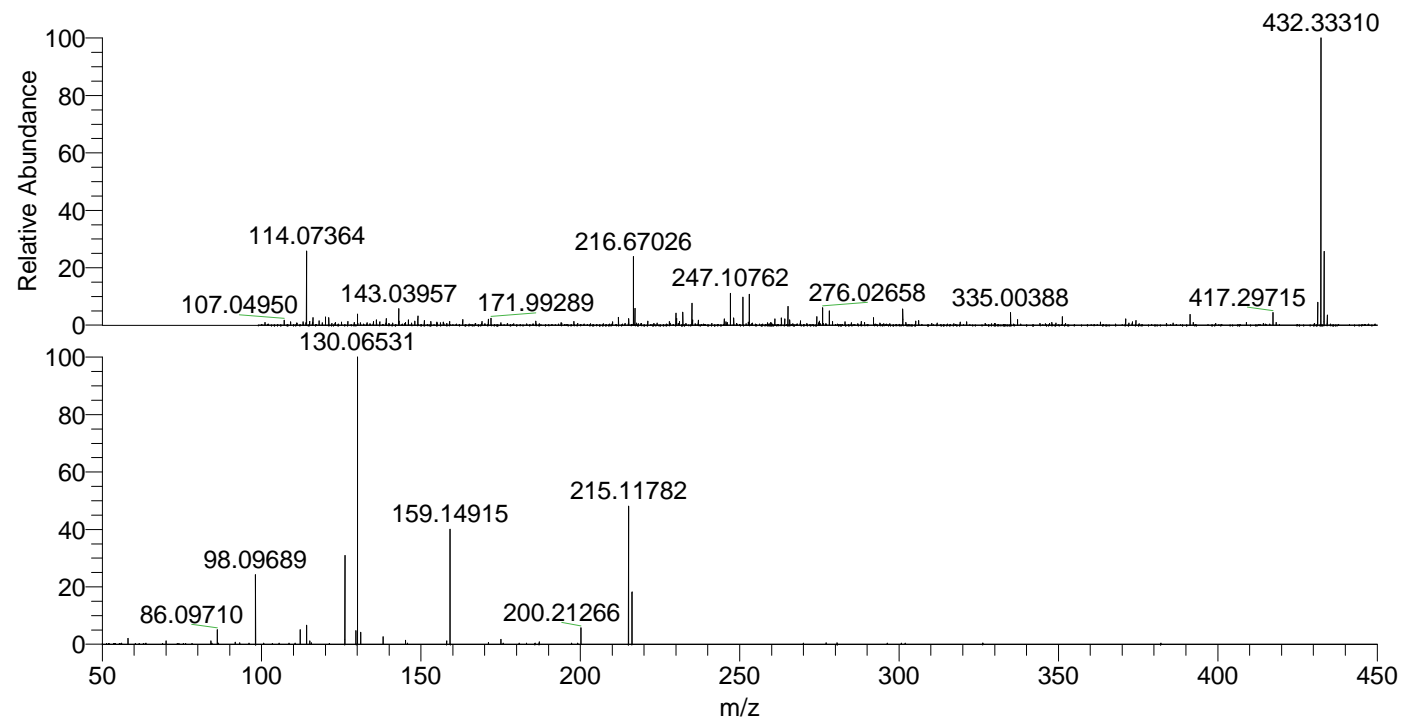
NL: 1.08E6
 Base Peak m/z= 216.66976-216.67192 F: FTMS + p ESI Full ms [100.00-1500.00] MS Aperta19

NL: 0
 Base Peak m/z= 546.32398-546.32944 F: FTMS + p ESI Full ms [100.00-1500.00] MS Aperta19

NL: 2.07E5
 Base Peak m/z= 50.00000-1500.00000 F: FTMS + p ESI d Full ms2 216.67@hcd35.00 [50.00-460.00] MS Aperta19

Aperta19#4397-4421 RT: 10.83-10.89
 F: FTMS + p ESI d Full ms2 216.67 ...
 m/z= 50.00000-1000.00000

m/z	Intensity	Relative
58.06609	3039.4	2.03
70.06591	1795.2	1.20
84.08173	1786.4	1.19
86.06076	1535.4	1.02
86.09710	7630.8	5.09
91.75154	1104.2	0.74
98.09689	36264.2	24.20
112.11267	7845.9	5.24
114.09191	9837.6	6.57
115.12315	1668.4	1.11
115.61517	751.4	0.50
126.12790	47421.8	31.65
129.63112	7264.0	4.85
130.06531	149826.8	100.00
131.11842	6385.4	4.26
138.14425	3956.1	2.64
145.17012	2048.9	1.37
158.06071	1702.2	1.14
159.09200	2738.6	1.83
159.14915	61977.1	41.37
171.14968	860.9	0.57
175.06360	2721.1	1.82
187.08680	1233.7	0.82
200.21266	8869.2	5.92
215.11782	71908.3	47.99
216.20694	28135.6	18.78



NL: 4.49E6
 Aperta19#4405 RT: 10.85 AV: 1 T: FTMS + p ESI Full lock ms [100.00-1500.00]

NL: 1.49E5
 Aperta19#4380-4435 RT: 10.83-10.89 AV: 5 F: FTMS + p ESI d Full ms2 216.67@hcd35.00 [50.00-460.00]