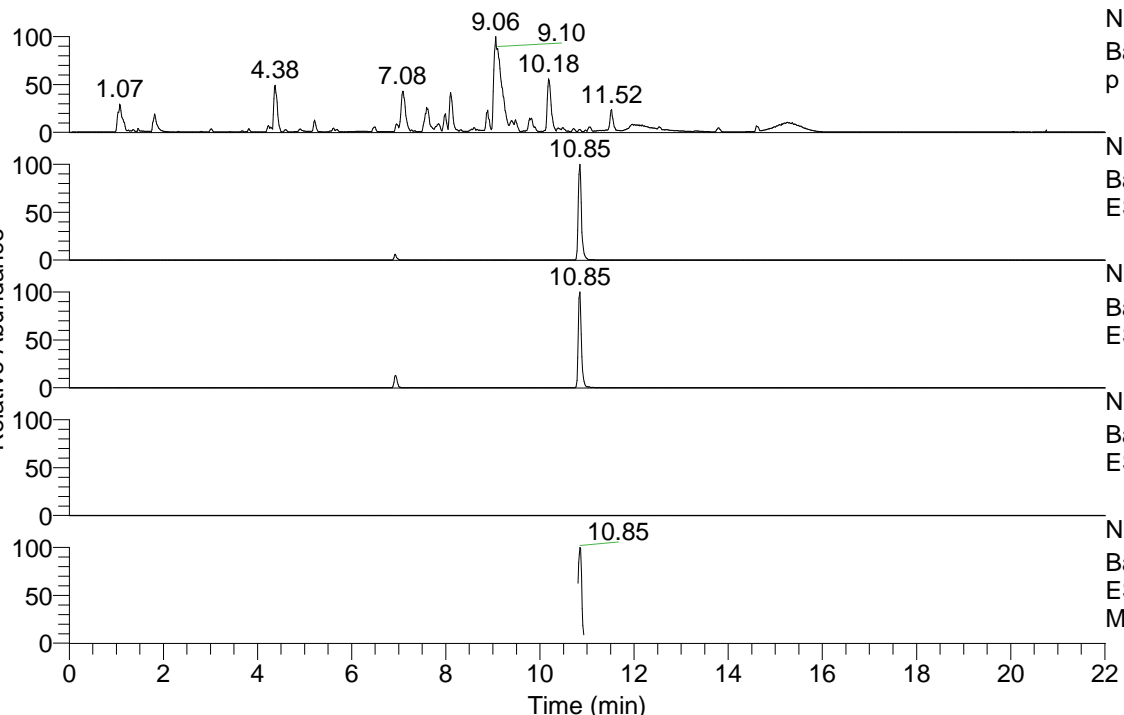


RT: 0.00 - 22.01



NL: 1.54E8  
 Base Peak m/z= 100.00000-1500.00000 F: FTMS + p ESI Full ms [100.00-1500.00] MS Aperta19

NL: 4.71E6  
 Base Peak m/z= 432.33169-432.33601 F: FTMS + p ESI Full ms [100.00-1500.00] MS Aperta19

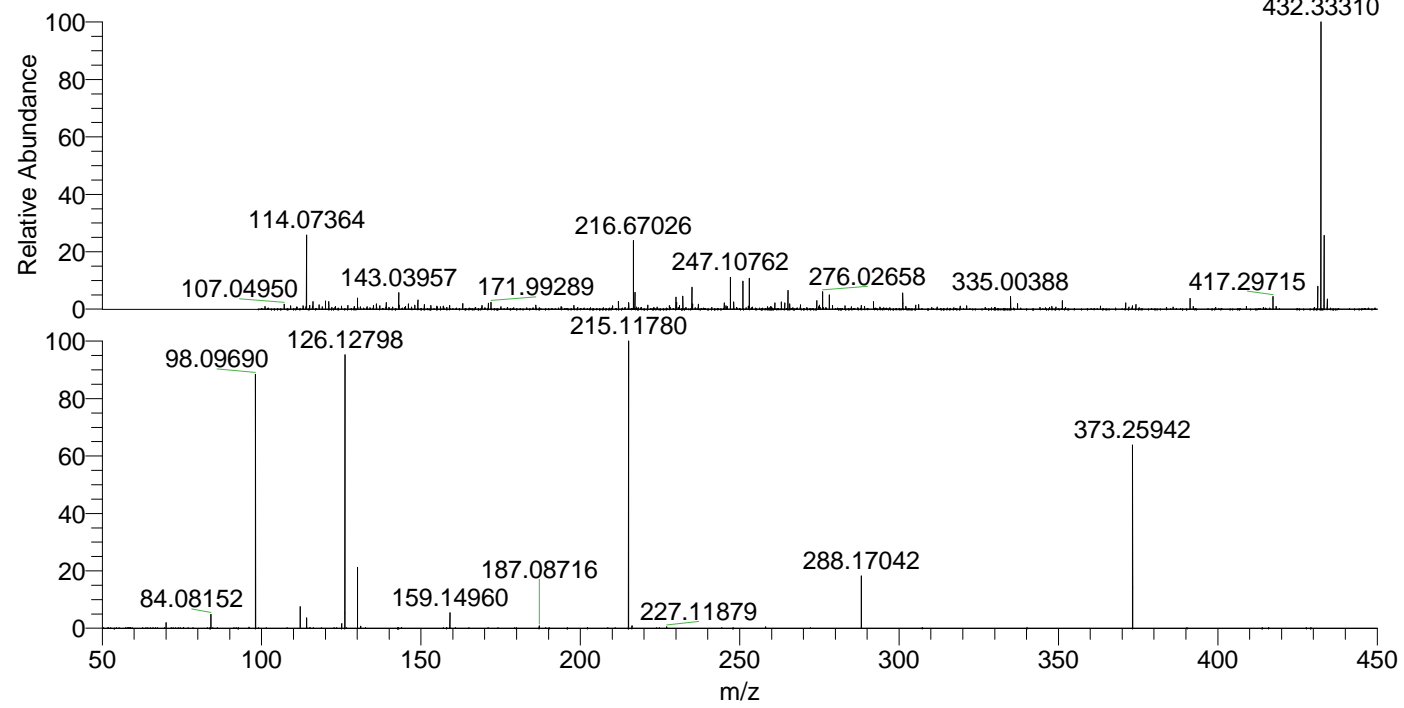
NL: 1.08E6  
 Base Peak m/z= 216.66976-216.67192 F: FTMS + p ESI Full ms [100.00-1500.00] MS Aperta19

NL: 0  
 Base Peak m/z= 546.32398-546.32944 F: FTMS + p ESI Full ms [100.00-1500.00] MS Aperta19

NL: 5.27E5  
 Base Peak m/z= 50.00000-1500.00000 F: FTMS + p ESI d Full ms2 432.33@hcd35.00 [50.00-460.00] MS Aperta19

Aaperta19#4390-4430 RT: 10.81-10.91  
 F: FTMS + p ESI d Full ms2 432.33 ...  
 m/z= 50.00000-1000.00000

m/z	Intensity	Relative
70.06588	6421.4	1.86
84.08152	16037.2	4.64
98.09690	305884.9	88.59
112.11249	25664.0	7.43
114.09188	12259.3	3.55
125.12030	5607.1	1.62
126.12798	327023.3	94.71
130.06522	71495.1	20.71
131.11819	2292.6	0.66
159.14960	18003.4	5.21
187.08716	2696.4	0.78
215.11779	345285.5	100.00
216.20740	2880.3	0.83
227.11879	1812.5	0.52
288.17046	62716.7	18.16
373.25940	218615.0	63.31



NL: 4.49E6  
 Aaperta19#4405 RT: 10.85 AV: 1 T: FTMS + p ESI Full lock ms [100.00-1500.00]

NL: 3.78E5  
 Aaperta19#4388-4426 RT: 10.81-10.90 AV: 7 F: FTMS + p ESI d Full ms2 432.33@hcd35.00 [50.00-460.00]