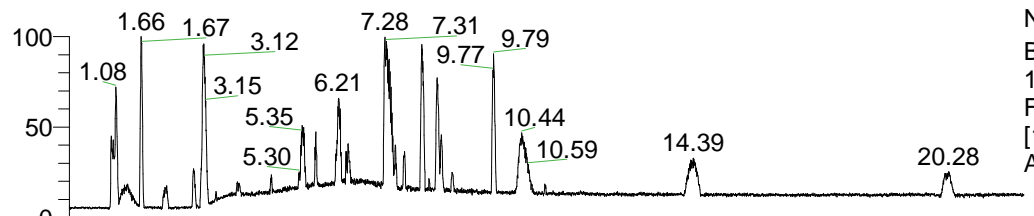


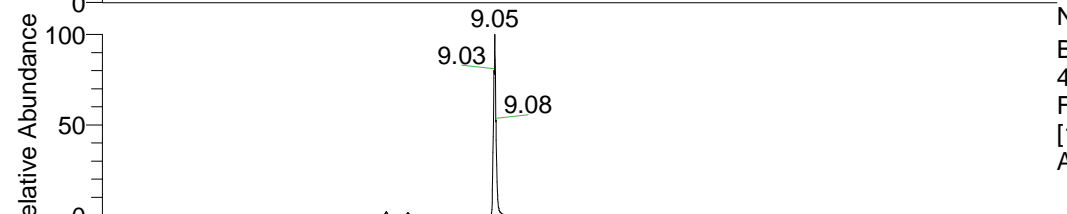
RT: 0.00 - 22.01



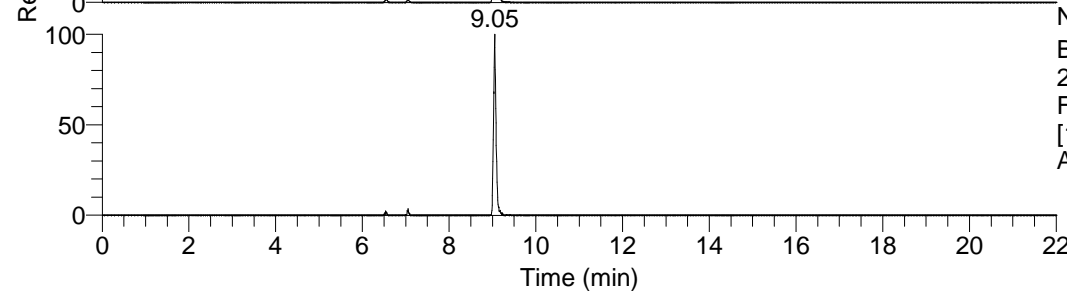
NL: 1.41E8
 Base Peak m/z=
 100.00000-1500.00000 F:
 FTMS + p ESI Full ms
 [100.00-1500.00] MS
 Aperta_HDX

Aperta_HDX#1513 RT: 9.05
 T: FTMS + p ESI Full ms [100.00-1500.00]
 m/z = 439.00000-440.00000

m/z	Intensity	Relative	Delta (ppm)	Composition
439.39890	18847714.0	100.00	-1.38	C ₂₄ H ₃₅ ² H ₈ ON ₆
			2.15	C ₂₄ H ₃₃ ² H ₉ ON ₆
			-4.90	C ₂₄ H ₃₇ ² H ₇ ON ₆
			5.67	C ₂₄ H ₃₁ ² H ₁₀ ON ₆
			-8.42	C ₂₄ H ₃₉ ² H ₆ ON ₆

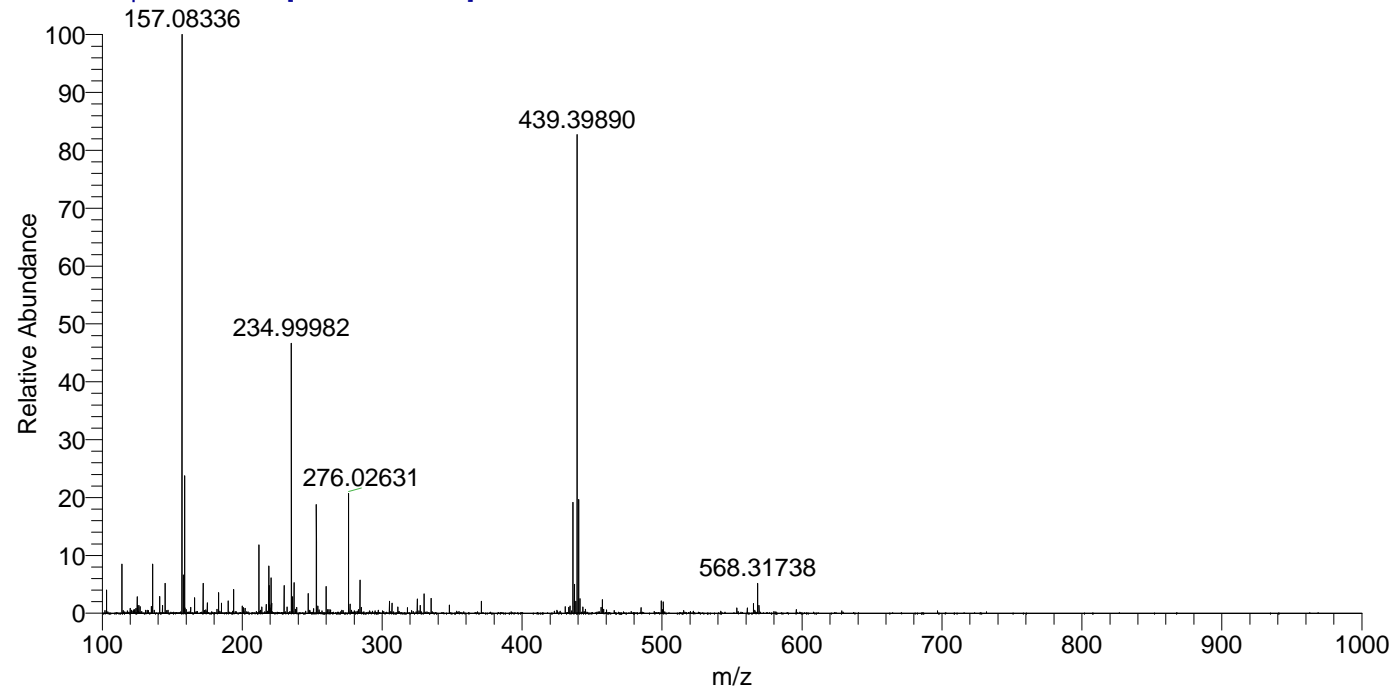


NL: 1.88E7
 Base Peak m/z=
 439.39785-439.40225 F:
 FTMS + p ESI Full ms
 [100.00-1500.00] MS
 Aperta_HDX



NL: 1.45E6
 Base Peak m/z=
 220.70598-220.70818 F:
 FTMS + p ESI Full ms
 [100.00-1500.00] MS
 Aperta_HDX

Aperta_HDX #1513 RT: 9.05 AV: 1 NL: 2.27E7
 T: FTMS + p ESI Full ms [100.00-1500.00]



Aperta_HDX #1513 RT: 9.05 AV: 1 NL: 1.88E7
 T: FTMS + p ESI Full ms [100.00-1500.00]

