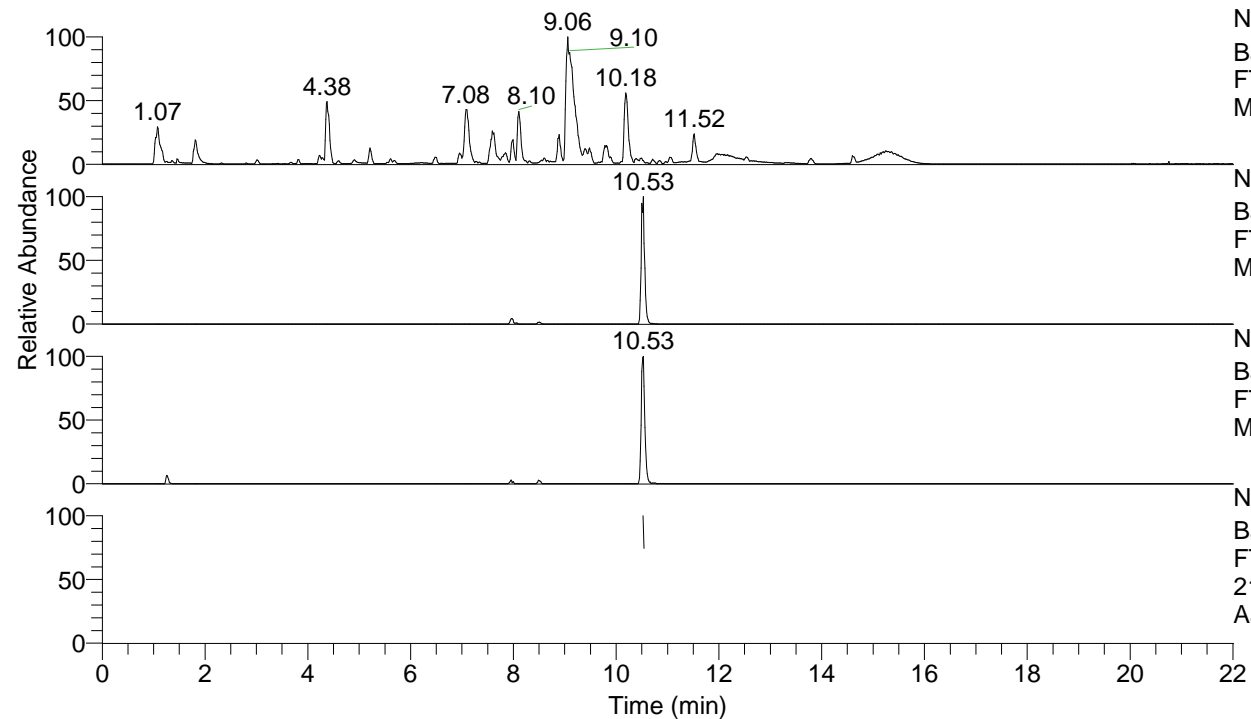


RT: 0.00 - 22.01



NL: 1.54E8
 Base Peak m/z= 100.00000-1500.00000 F:
 FTMS + p ESI Full ms [100.00-1500.00]
 MS Aperta19

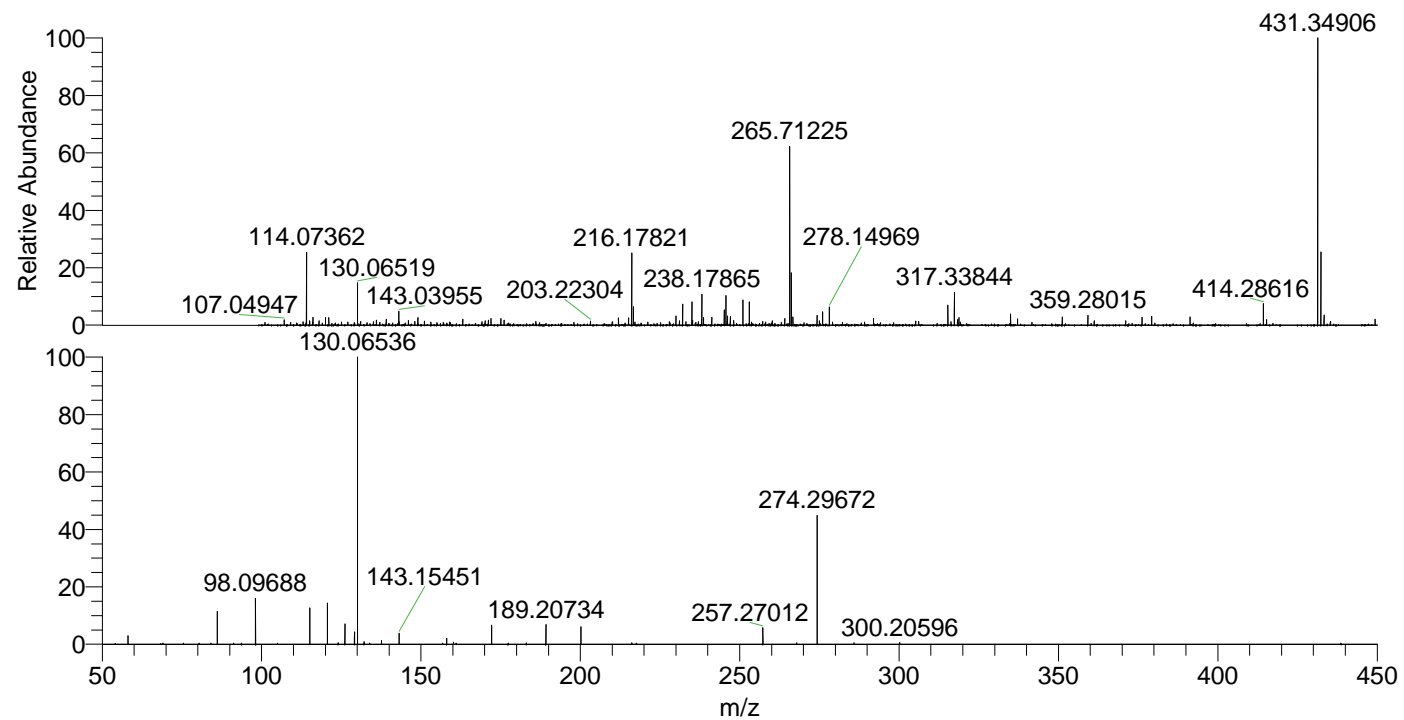
NL: 4.98E6
 Base Peak m/z= 431.34768-431.35200 F:
 FTMS + p ESI Full ms [100.00-1500.00]
 MS Aperta19

NL: 1.22E6
 Base Peak m/z= 216.17775-216.17991 F:
 FTMS + p ESI Full ms [100.00-1500.00]
 MS Aperta19

NL: 4.43E5
 Base Peak m/z= 50.00000-1500.00000 F:
 FTMS + p ESI d Full ms2
 216.18@hcd35.00 [50.00-460.00] MS
 Aperta19

Aperta19#4278-4284 RT: 10.53-10.54
 F: FTMS + p ESI d Full ms2 216.18 ...
 m/z= 50.00000-1000.00000

| m/z | Intensity | Relative |
|-----------|-----------|----------|
| 58.06610 | 10789.1 | 2.90 |
| 86.09714 | 42158.1 | 11.33 |
| 98.09688 | 58988.1 | 15.86 |
| 115.12333 | 47135.1 | 12.67 |
| 120.62569 | 53215.1 | 14.31 |
| 124.01509 | 1935.6 | 0.52 |
| 126.12807 | 26837.3 | 7.22 |
| 129.13899 | 15893.9 | 4.27 |
| 130.06536 | 371932.2 | 100.00 |
| 132.15053 | 3212.6 | 0.86 |
| 137.65208 | 4833.2 | 1.30 |
| 143.15451 | 14894.0 | 4.00 |
| 158.05969 | 7889.3 | 2.12 |
| 160.18130 | 2628.7 | 0.71 |
| 172.18107 | 24356.1 | 6.55 |
| 189.20734 | 26409.6 | 7.10 |
| 200.21220 | 22716.7 | 6.11 |
| 216.17981 | 2055.1 | 0.55 |
| 257.27012 | 21326.7 | 5.73 |
| 267.87325 | 2006.5 | 0.54 |
| 274.29672 | 166980.4 | 44.90 |
| 300.20596 | 2200.4 | 0.59 |



NL: 4.76E6
 Aperta19#4279 RT:
 10.53 AV: 1 T: FTMS + p
 ESI Full lock ms
 [100.00-1500.00]

NL: 3.70E5
 Aperta19#4252-4314 RT:
 10.53-10.54 AV: 2 F:
 FTMS + p ESI d Full ms2
 216.18@hcd35.00
 [50.00-460.00]