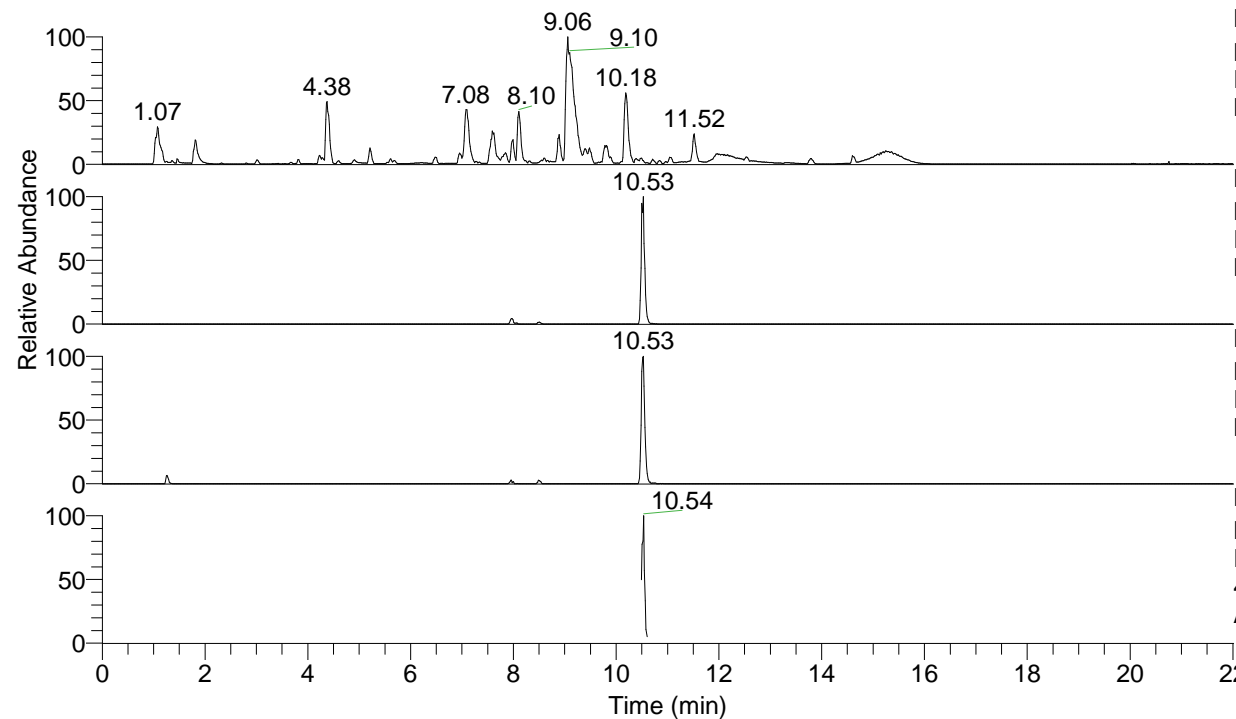


RT: 0.00 - 22.01



NL: 1.54E8  
 Base Peak m/z= 100.00000-1500.00000 F:  
 FTMS + p ESI Full ms [100.00-1500.00]  
 MS Aperta19

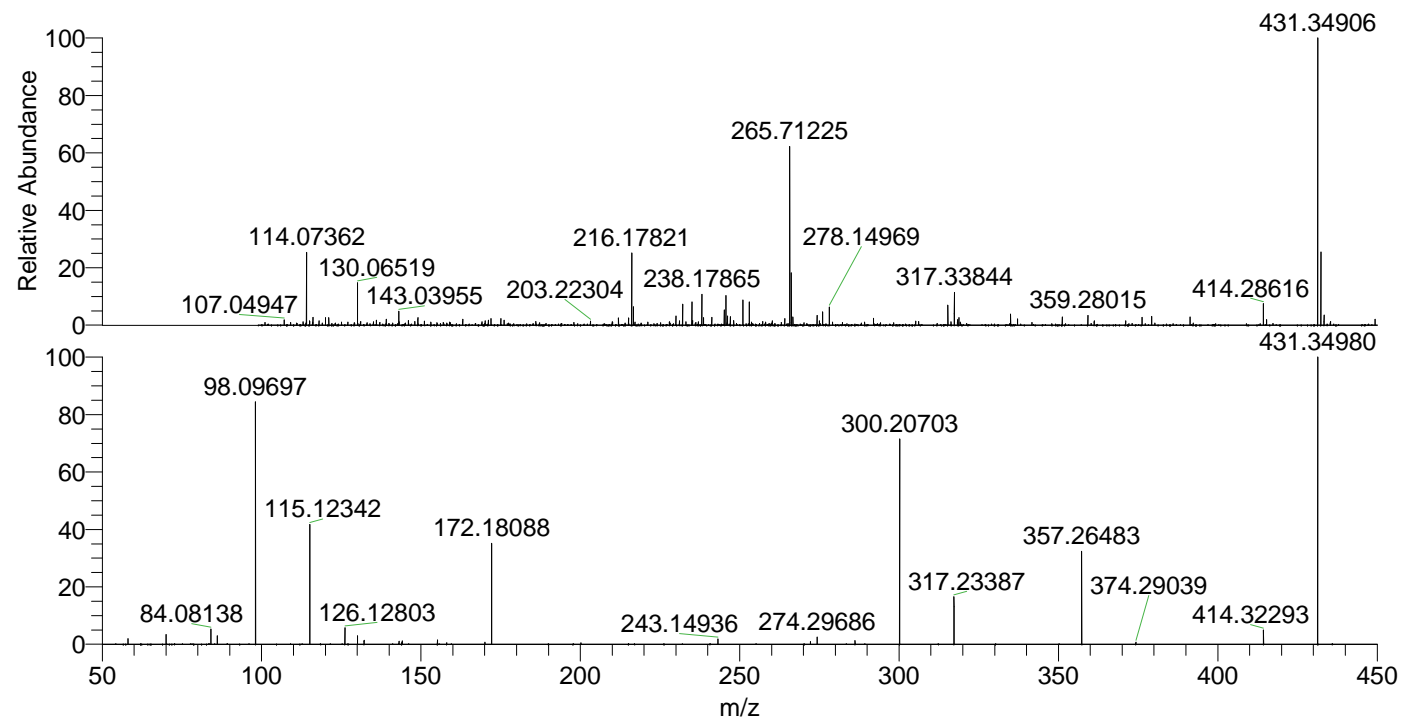
NL: 4.98E6  
 Base Peak m/z= 431.34768-431.35200 F:  
 FTMS + p ESI Full ms [100.00-1500.00]  
 MS Aperta19

NL: 1.22E6  
 Base Peak m/z= 216.17775-216.17991 F:  
 FTMS + p ESI Full ms [100.00-1500.00]  
 MS Aperta19

NL: 8.86E5  
 Base Peak m/z= 50.00000-1500.00000 F:  
 FTMS + p ESI d Full ms2  
 431.35@hcd35.00 [50.00-460.00] MS  
 Aperta19

Aperta19#4264-4308 RT: 10.49-10.60  
 F: FTMS + p ESI d Full ms2 431.35 ...  
 m/z= 50.00000-1000.00000

m/z	Intensity	Relative
58.06592	8399.2	1.98
70.06585	14407.0	3.39
84.08138	21918.2	5.16
86.09698	12598.0	2.96
98.09697	366062.4	86.12
115.12342	178176.9	41.92
126.12803	23854.7	5.61
130.06595	12823.1	3.02
132.14992	5768.0	1.36
143.15460	4394.1	1.03
144.08085	2939.3	0.69
144.13874	4841.9	1.14
155.15427	6493.4	1.53
170.09648	2976.7	0.70
172.18088	150395.3	35.38
243.14936	8050.3	1.89
272.17585	3795.5	0.89
274.29686	10719.8	2.52
286.19176	5245.9	1.23
300.20703	309247.4	72.76
317.23387	69314.7	16.31
357.26483	137158.0	32.27
374.29039	2865.1	0.67
414.32293	20953.4	4.93
431.34980	425036.8	100.00



NL: 4.76E6  
 Aperta19#4279 RT:  
 10.53 AV: 1 T: FTMS + p  
 ESI Full lock ms  
 [100.00-1500.00]

NL: 4.17E5  
 Aperta19#4220-4314 RT:  
 10.49-10.60 AV: 8 F:  
 FTMS + p ESI d Full ms2  
 431.35@hcd35.00  
 [50.00-460.00]