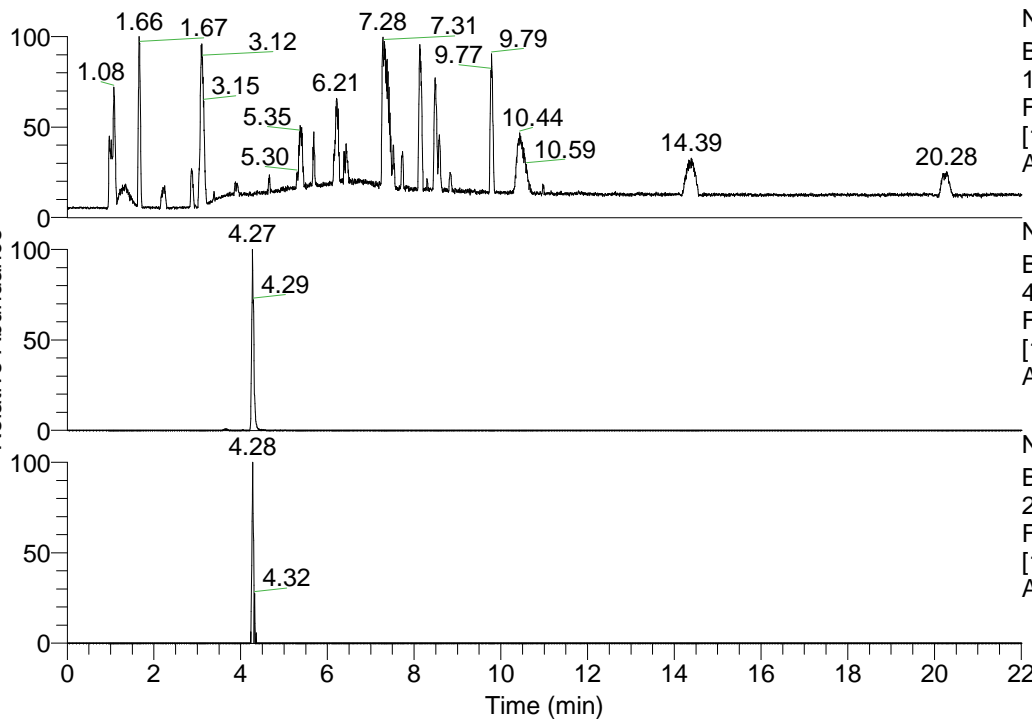


RT: 0.00 - 22.01



NL: 1.41E8  
 Base Peak m/z=  
 100.00000-1500.00000 F:  
 FTMS + p ESI Full ms  
 [100.00-1500.00] MS  
 Aperta\_HDX

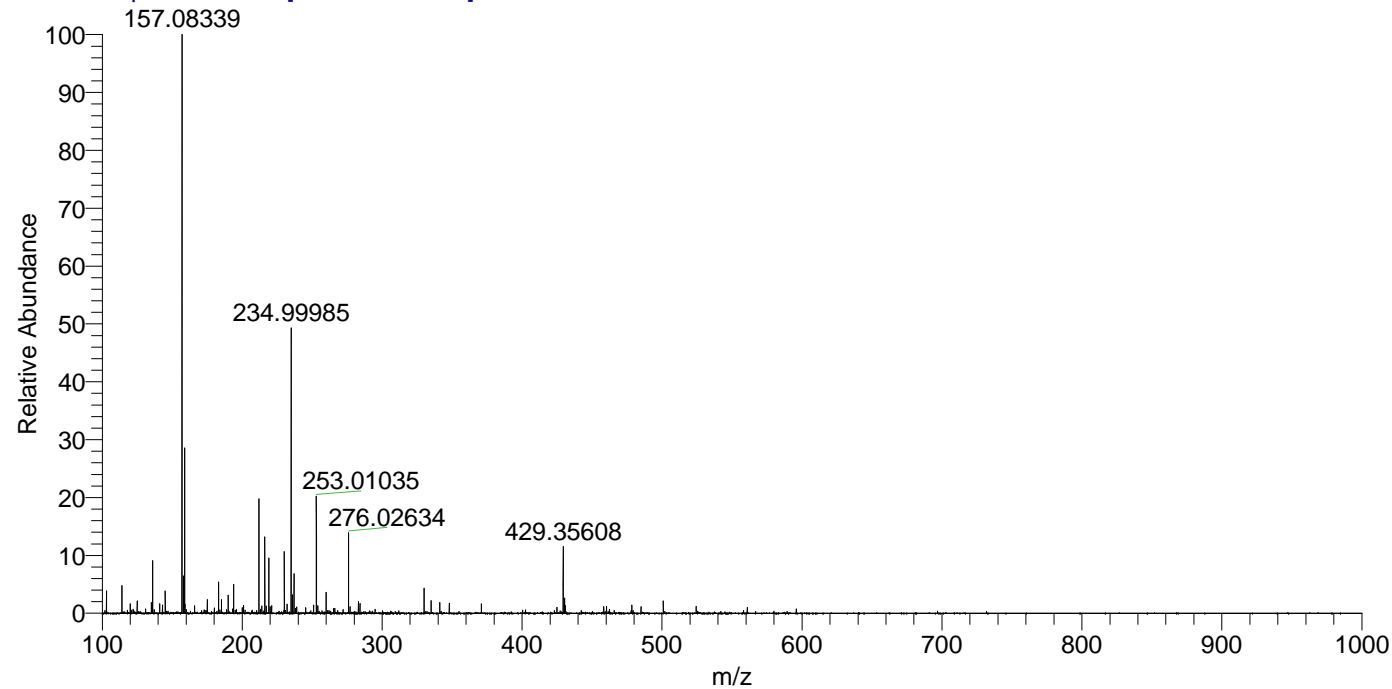
Aperta\_HDX#693 RT: 4.27  
 T: FTMS + p ESI Full ms [100.00-1500.00]  
 m/z= 429.00000-430.00000

m/z	Intensity	Relative	Delta (ppm)	Composition
429.35608	2001334.1	100.00	-0.99	C <sub>22</sub> H <sub>33</sub> <sup>2</sup> H <sub>7</sub> O <sub>3</sub> N <sub>5</sub>
			2.62	C <sub>22</sub> H <sub>31</sub> <sup>2</sup> H <sub>8</sub> O <sub>3</sub> N <sub>5</sub>
			-4.60	C <sub>22</sub> H <sub>35</sub> <sup>2</sup> H <sub>6</sub> O <sub>3</sub> N <sub>5</sub>
			6.22	C <sub>22</sub> H <sub>29</sub> <sup>2</sup> H <sub>9</sub> O <sub>3</sub> N <sub>5</sub>
			-8.20	C <sub>22</sub> H <sub>37</sub> <sup>2</sup> H <sub>5</sub> O <sub>3</sub> N <sub>5</sub>
			9.83	C <sub>22</sub> H <sub>27</sub> <sup>2</sup> H <sub>10</sub> O <sub>3</sub> N <sub>5</sub>

NL: 2.31E6  
 Base Peak m/z=  
 429.35490-429.35920 F:  
 FTMS + p ESI Full ms  
 [100.00-1500.00] MS  
 Aperta\_HDX

NL: 9.71E4  
 Base Peak m/z=  
 215.68450-215.68666 F:  
 FTMS + p ESI Full ms  
 [100.00-1500.00] MS  
 Aperta\_HDX

Aperta\_HDX #693 RT: 4.27 AV: 1 NL: 1.74E7  
 T: FTMS + p ESI Full ms [100.00-1500.00]



Aperta\_HDX #693 RT: 4.27 AV: 1 NL: 2.00E6  
 T: FTMS + p ESI Full ms [100.00-1500.00]

