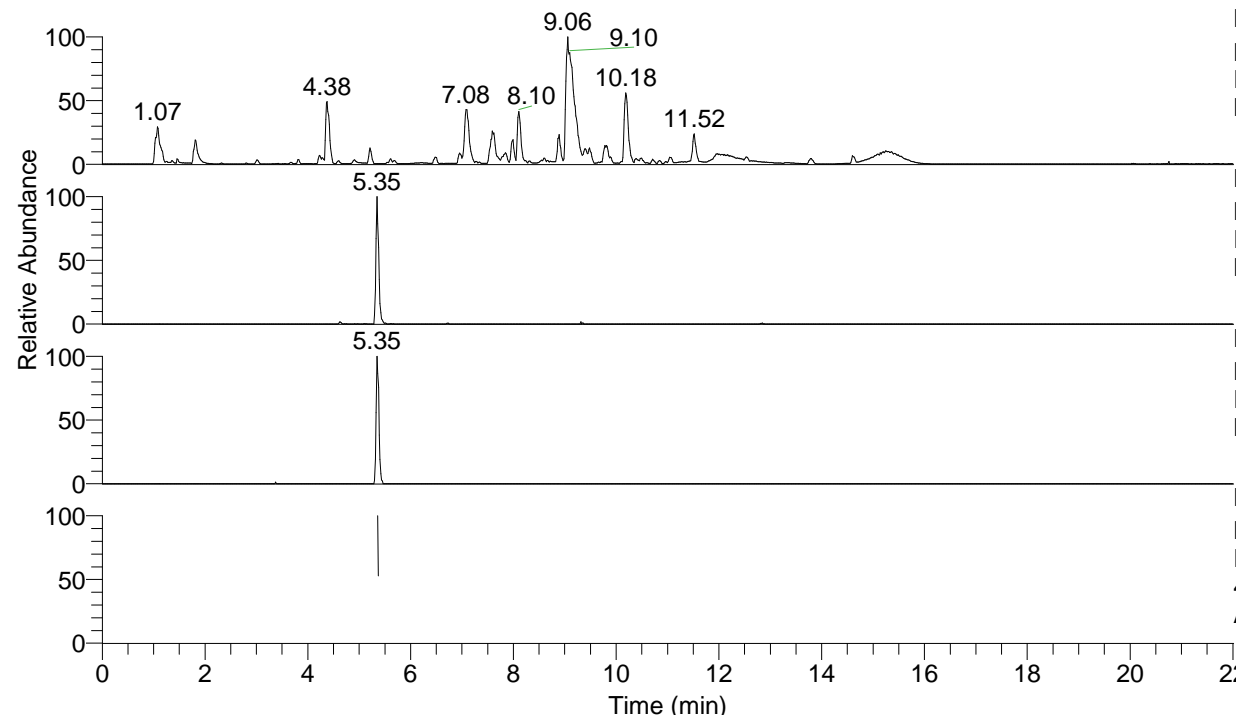


RT: 0.00 - 22.01



NL: 1.54E8
 Base Peak m/z= 100.00000-1500.00000 F:
 FTMS + p ESI Full ms [100.00-1500.00]
 MS Aperta19

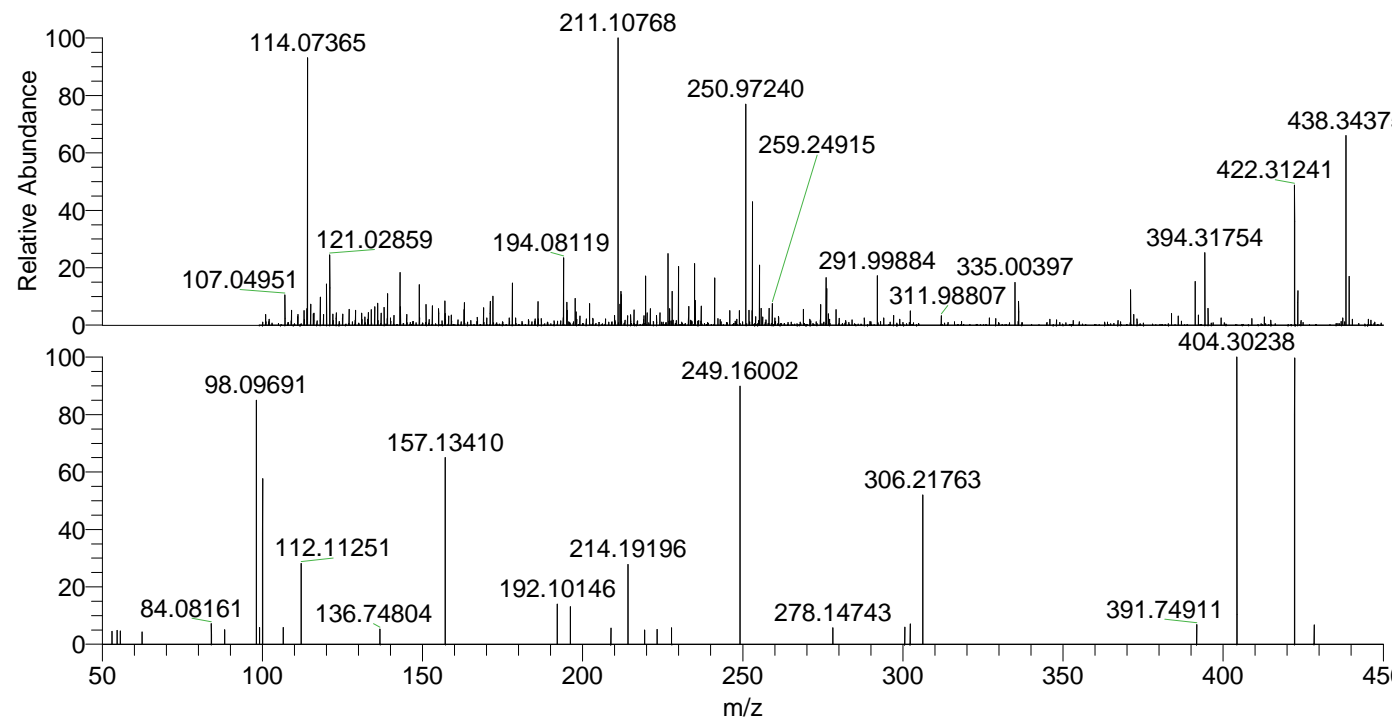
NL: 5.01E5
 Base Peak m/z= 422.31101-422.31523 F:
 FTMS + p ESI Full ms [100.00-1500.00]
 MS Aperta19

NL: 7.64E4
 Base Peak m/z= 211.65941-211.66153 F:
 FTMS + p ESI Full ms [100.00-1500.00]
 MS Aperta19

NL: 5.61E4
 Base Peak m/z= 50.00000-1500.00000 F:
 FTMS + p ESI d Full ms2
 422.31@hcd35.00 [50.00-450.00] MS
 Aperta19

Aperta19#2166-2172 RT: 5.36-5.37 AV:
 F: FTMS + p ESI d Full ms2 422.31 ...
 m/z= 50.00000-1000.00000

m/z	Intensity	Relative
53.06103	1663.6	4.60
54.68480	1731.2	4.79
55.65790	1632.9	4.52
62.40378	1544.9	4.27
84.08161	2584.9	7.15
88.19800	1821.9	5.04
98.09691	30289.9	83.77
99.09265	2081.6	5.76
100.07624	21193.2	58.61
106.49216	2129.1	5.89
112.11251	10082.6	27.89
136.74804	1879.1	5.20
157.13410	23252.7	64.31
192.10146	5056.5	13.98
196.18103	4693.3	12.98
208.83404	2048.6	5.67
214.19196	10254.3	28.36
219.35274	1797.1	4.97
223.25975	1851.5	5.12
227.79260	2040.0	5.64
249.16002	32045.3	88.63
278.14743	2042.2	5.65
300.59777	2110.1	5.84
302.29125	2539.7	7.02
306.21763	18554.6	51.32
391.74911	2430.5	6.72
404.30238	36157.1	100.00
422.31367	35523.5	98.25
428.42952	2393.5	6.62



NL: 1.02E6
 Aperta19#2161 RT: 5.35
 AV: 1 T: FTMS + p ESI
 Full lock ms
 [100.00-1500.00]

NL: 3.56E4
 Aperta19#2155-2178
 RT: 5.36-5.37 AV: 2 F:
 FTMS + p ESI d Full ms2
 422.31@hcd35.00
 [50.00-450.00]