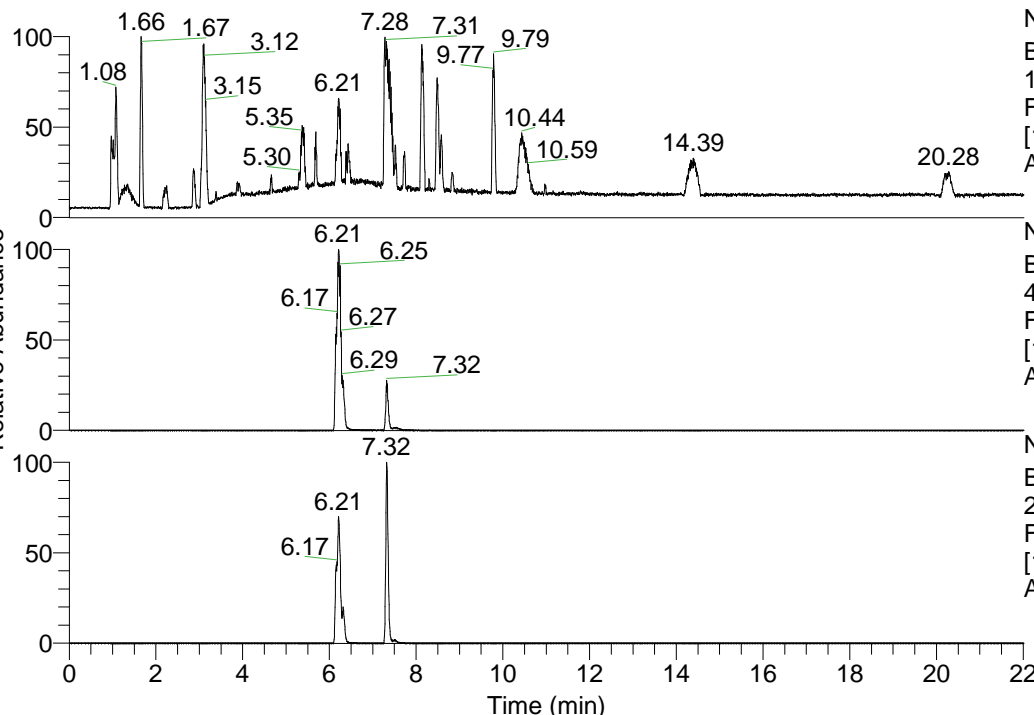


RT: 0.00 - 22.01



NL: 1.41E8  
 Base Peak m/z=  
 100.00000-1500.00000 F:  
 FTMS + p ESI Full ms  
 [100.00-1500.00] MS  
 Aperta\_HDX

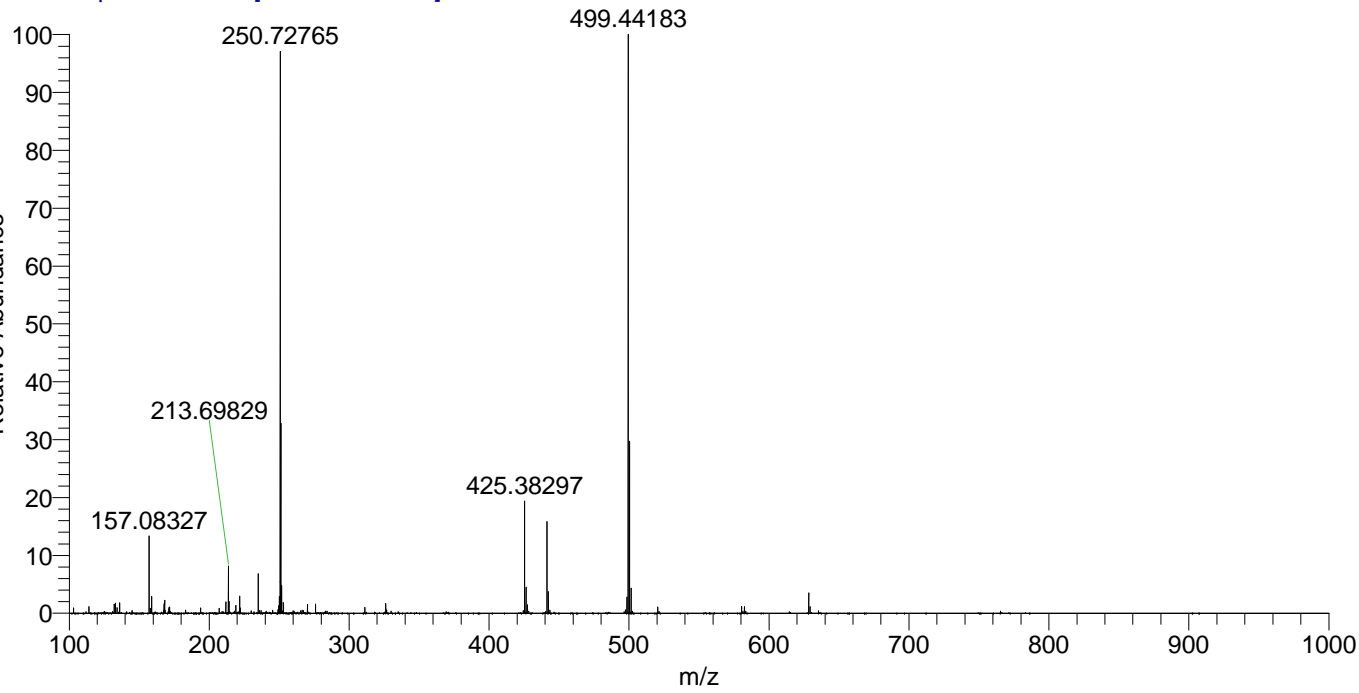
NL: 9.28E7  
 Base Peak m/z=  
 425.38227-425.38653 F:  
 FTMS + p ESI Full ms  
 [100.00-1500.00] MS  
 Aperta\_HDX

NL: 1.08E7  
 Base Peak m/z=  
 213.69818-213.70032 F:  
 FTMS + p ESI Full ms  
 [100.00-1500.00] MS  
 Aperta\_HDX

Aperta\_HDX#1212 RT: 7.32  
 T: FTMS + p ESI Full ms [100.00-1500.00]  
 m/z = 425.00000-426.00000

m/z	Intensity	Relative	Delta (ppm)	Composition
425.38297	25615662.0	100.00	1.56	C <sub>23</sub> H <sub>31</sub> <sup>2</sup> H <sub>9</sub> O <sub>N</sub> <sub>6</sub>
			-2.08	C <sub>23</sub> H <sub>33</sub> <sup>2</sup> H <sub>8</sub> O <sub>N</sub> <sub>6</sub>
			5.20	C <sub>23</sub> H <sub>29</sub> <sup>2</sup> H <sub>10</sub> O <sub>N</sub> <sub>6</sub>
			-5.72	C <sub>23</sub> H <sub>35</sub> <sup>2</sup> H <sub>7</sub> O <sub>N</sub> <sub>6</sub>
			-9.36	C <sub>23</sub> H <sub>37</sub> <sup>2</sup> H <sub>6</sub> O <sub>N</sub> <sub>6</sub>

Aperta\_HDX #1212 RT: 7.32 AV: 1 NL: 1.32E8  
 T: FTMS + p ESI Full ms [100.00-1500.00]



Aperta\_HDX #1212 RT: 7.32 AV: 1 NL: 2.55E7  
 T: FTMS + p ESI Full ms [100.00-1500.00]

