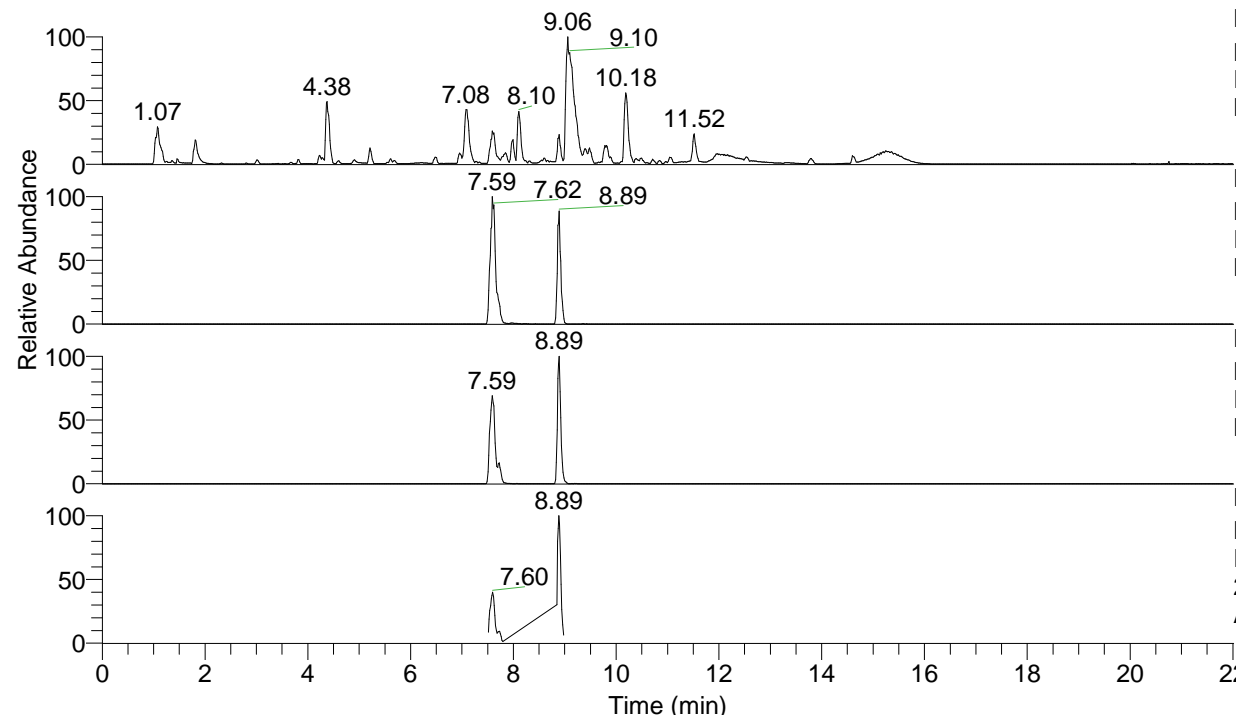


RT: 0.00 - 22.01



NL: 1.54E8
 Base Peak m/z= 100.00000-1500.00000 F:
 FTMS + p ESI Full ms [100.00-1500.00]
 MS Aperta19

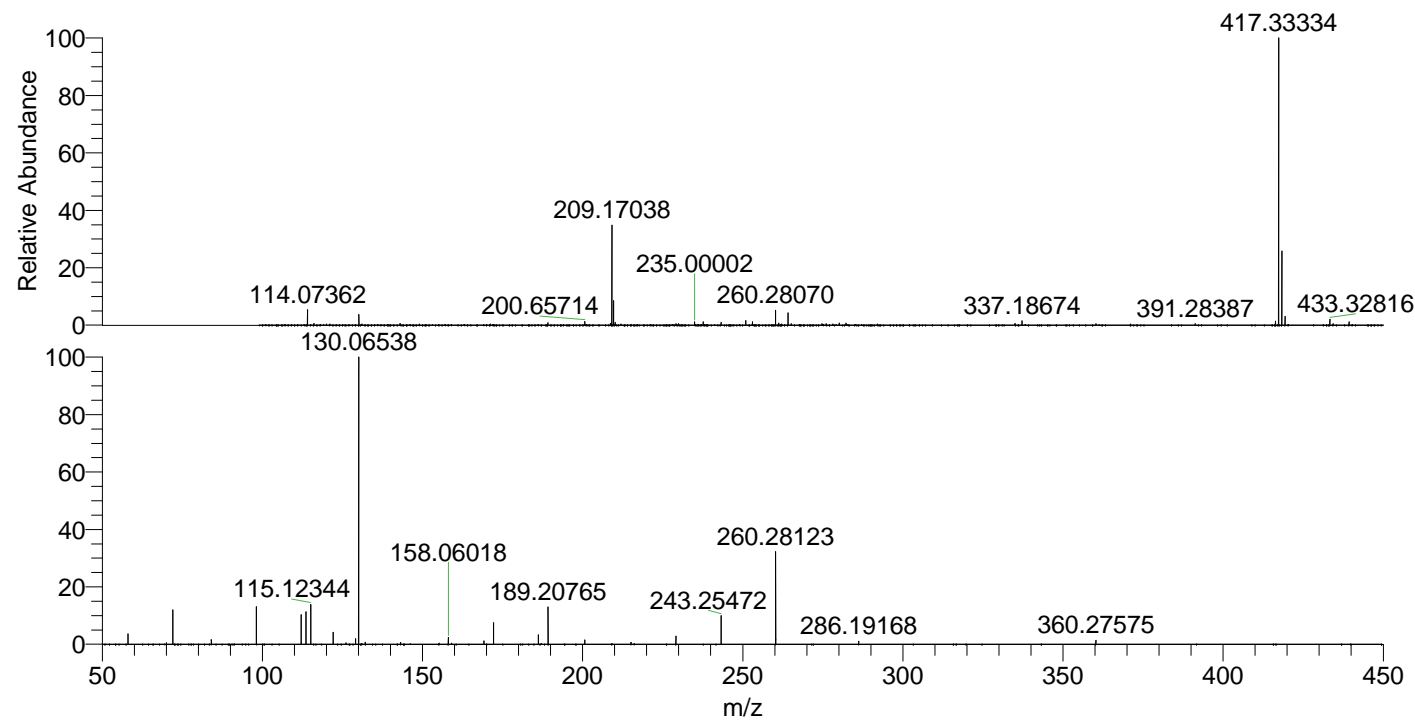
NL: 4.04E7
 Base Peak m/z= 417.33209-417.33627 F:
 FTMS + p ESI Full ms [100.00-1500.00]
 MS Aperta19

NL: 1.18E7
 Base Peak m/z= 209.16995-209.17205 F:
 FTMS + p ESI Full ms [100.00-1500.00]
 MS Aperta19

NL: 3.41E6
 Base Peak m/z= 50.00000-1500.00000 F:
 FTMS + p ESI d Full ms2
 209.17@hcd35.00 [50.00-445.00] MS
 Aperta19

Aaperta19#3568-3614 RT: 8.83-8.94 AV: 9
 F: FTMS + p ESI d Full ms2 417.33@h ...
 m/z= 50.00000-1000.00000

m/z	Intensity	Relative
58.06602	76397.0	2.84
70.06595	181707.4	6.75
72.08155	138369.5	5.14
84.08158	91648.8	3.41
98.09697	2327222.0	86.48
112.11246	342292.5	12.72
115.12332	1224089.1	45.49
126.12813	24251.3	0.90
129.13900	52027.4	1.93
130.06527	139325.7	5.18
132.14980	49578.8	1.84
155.15458	62316.2	2.32
158.06063	16001.8	0.59
159.09206	13496.8	0.50
172.18085	971610.9	36.10
186.19687	17280.1	0.64
215.11798	39785.1	1.48
229.13377	503041.6	18.69
258.16047	28762.4	1.07
260.28133	154863.9	5.75
272.17619	52696.1	1.96
286.19122	1728843.1	64.24
303.21802	450317.1	16.73
325.23976	18334.1	0.68
343.24952	942651.1	35.03
360.27604	41509.2	1.54
399.32385	43856.3	1.63
400.30751	150132.9	5.58
417.33379	2691109.5	100.00



NL: 3.38E7
 Aaperta19#3595 RT: 8.89
 AV: 1 T: FTMS + p ESI
 Full lock ms
 [100.00-1500.00]

NL: 2.13E6
 Aaperta19#3572-3617
 RT: 8.84-8.94 AV: 8 F:
 FTMS + p ESI d Full ms2
 209.17@hcd35.00
 [50.00-445.00]